

PERFORMANCE®



The new degree of comfort.®

PERFORMANCE® Ultra Low NOx gas water heaters offer a six-year warranty and are SCAQMD rule 1121 compliant with 10 ng/J NOx emissions

Efficiency

- .58 - .63 UEF
- More hot water at a low operating cost

Performance

- FHR: 51 - 99 gallons for natural gas
- Recovery: 30 to 45.5 GPH at 90° F rise

Maintenance Free Burner System

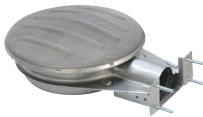
- Exclusive fuel shut-off device
- Maintenance free – no filter to clean
- Disables the heater in the presence of flammable vapor accumulation



Maintenance Free

Low Emissions

- Ultra Low NOx radiant burner design
- Stainless steel burner construction
- SCAQMD Rule 1121 compliant
- Meets 10 ng/J NOx requirements



Easy to Light

- No matches required

Longer Life

- Premium grade anode rod provides long-lasting tank protection

Diagnostic Valve

- Self powered diagnostic gas control valve for improved monitoring and service



High Altitude Compliant

- Select models certified up to 10,000 ft. above sea level

Plus...

- Skinny models with smaller tank diameter 16 & 18" diameter
- Side water connections for space heating applications **available on select models**
- Enhanced flow brass drain valve
- Temperature and pressure relief valve included
- Factory installed temperature and pressure relief valve on select models
- Low lead compliant

Warranty

- 6-Year limited warranty for tank and parts, 1-year full in-home labor warranty*

*See written warranty for complete details

Units meet or exceed ANSI requirements and have been tested according to D.O.E. procedures. Units meet or exceed the energy efficiency requirements of NAECA, ASHRAE standard 90, ICC Code and all state energy efficiency performance criteria.



PERFORMANCE Ultra Low NOx

29, 40, 50 and 55-Gallon Capacities
Up to 48,000 BTU/h



See specifications chart on back.

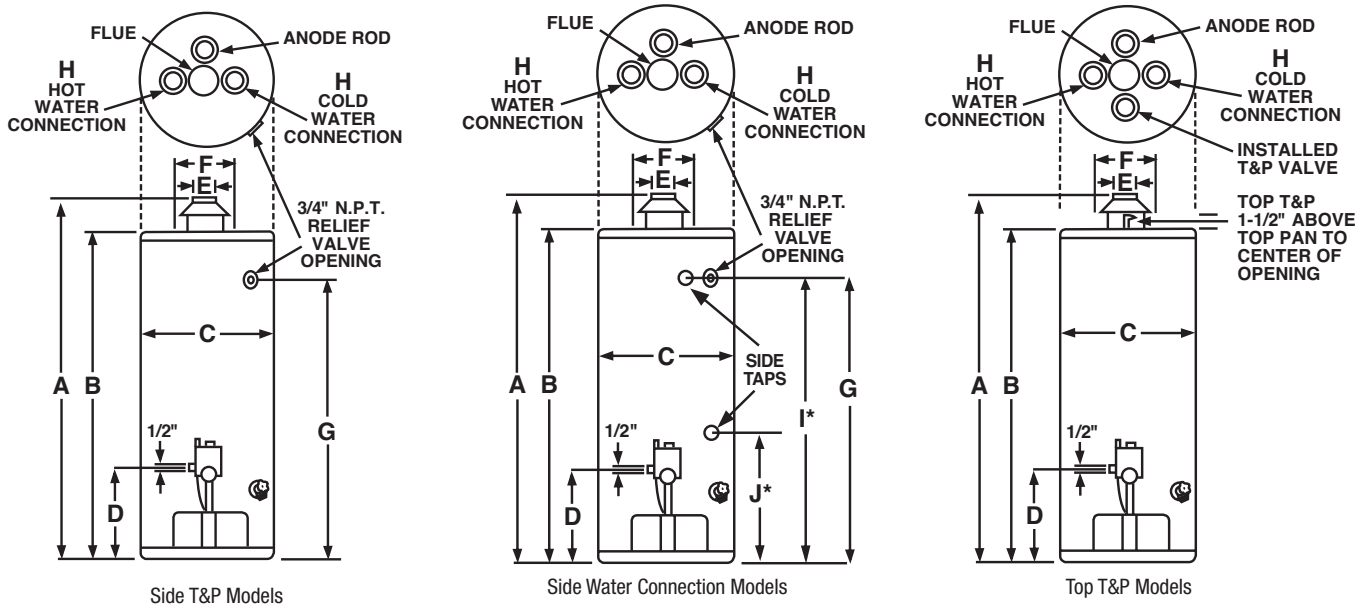


The new degree of comfort.®

PERFORMANCE® Ultra Low NOx Gas Specifications

Fuel Type	Description	Nominal Gallon Capacity	Rated Gallon Capacity	Model Number	Gas Input in Thous. Btu/h	Recovery in G.P.H. 90° F Rise	First Hour Rating (Gallons)	Ht. to Vent A	Tank Height B	Diam. C	Ht. to Gas Conn. D	Vent Size E	Water Conn. Center F	Ht. to Side T&P Valve G	Water Conn. Size H	Ship Weight (LBS)	Uniform Energy Factor (UEF)	MAX ALTITUDE (FEET)
Performance – Self Powered Diagnostic Control																		
Natural Gas	Tall	50	48	XG50T06EN38U2	38	38	86	61-1/4	58-3/8	20-1/2	14	3 or 4	8	51-3/8	3/4	150	0.63	10,000
Natural Gas	Short	50	48	XG50S06EN40U1	40	40	85	54-1/4	51-1/8	23-3/4	14	3 or 4	8	44-1/4	3/4	186	0.63	10,000
Natural Gas	Tall	40	38	XG40T06EN38U1	38	38	72	61-1/2	58-1/2	19	14	3 or 4	8	52-1/4	3/4	127	0.58	10,000
Natural Gas	Short	40	39	XG39S06EN38U1	38	38	68	52-1/8	49-1/4	21	14	3 or 4	8	42-3/4	3/4	135	0.59	10,000
Natural Gas	Tall	29	28	XG29T06EN30U1	30	30	51	59-3/4	56-7/8	16-1/2	14	3 or 4	8	50-7/8	3/4	112	0.60	10,000
Performance – Self Powered Diagnostic Control with Top T&P																		
Natural Gas	Tall	50	48	XG50T06TN38U1	38	38	86	61-1/4	58-3/8	20-1/2	14	3 or 4	8	–	3/4	150	0.63	10,000
Natural Gas	Tall	40	38	XG40T06TN38U1	38	38	71	61-1/2	58-1/2	19	14	3 or 4	8	–	3/4	127	0.58	10,000
Performance – Self Powered Diagnostic Control – High Demand																		
Natural Gas	Tall	55	55	XG55T06EN45U2	45	45.5	99	59-1/8	55-7/8	23-3/4	14	4	8	47-3/4	3/4	188	0.62	10,000
Performance – High BTU Models with Installed Side Water Connections																		
Natural Gas	Tall	50	48	XG50T06EN48U0	48	46	88	61-3/4	58-1/2	21-3/4	4	4	11	51-7/8	3/4	150	0.63	10,000
Performance – Skinny Models with Installed Top T&P Valve																		
Natural Gas	Tall	50	46	XG50T06TN34U0	34	34	80	61-1/4	58-3/8	20	14	3 or 4	8	–	3/4	150	0.63	5,400
Natural Gas	Tall	40	38	XG40T06TN34U0	34	34	71	61-1/2	58-1/2	18	14	3 or 4	8	–	3/4	135	0.58	5,400
Performance – Skinny Models																		
Natural Gas	Tall	50	46	XG50T06EN34U0	34	34	80	61-1/4	58-3/8	20	14	3 or 4	8	51-3/8	3/4	150	0.63	5,400
Natural Gas	Tall	40	38	XG40T06EN34U0	34	34	71	61-1/2	58-1/2	18	14	3 or 4	8	52-1/4	3/4	135	0.58	5,400
Natural Gas	Tall	29	28	XG29T06EN27U0	27	31	58	59-3/4	56-7/8	16	14-1/4	3 or 4	11	50-3/4	3/4	112	0.60	7,800

Uniform Energy Factor and rated gallon capacity based on Department of Energy (DOE) requirements.



In keeping with its policy of continuous progress and product improvement, Rheem reserves the right to make changes without notice.

Rheem Water Heating • 1115 Northmeadow Parkway, Suite 100
Roswell, Georgia 30076 • www.rheem.com