

# Eemax® AutoBooster®

## Delivers up to 45%\* More Hot Water

AutoBooster conveniently installs on the tank outlet water connection with the option to mount on a nearby wall. It's a smart way to deliver more hot water when a tank alone can't keep up with the demand.

### PERFORMANCE FEATURES

- Increases deliverable hot water up to 45%\*
- **Saves Space** – compact design eliminates the need for a second water heater
- **High Efficiency** – UEF up to .96 and advanced self-modulating technology only consumes the power needed to satisfy hot water demand
- Easy to read digital display shows the inlet and outlet water temperature, operation status, water flow (GPM) and electricity load percentage
- Control dial sets the activation and maximum temperature in 1-degree increments ranging from 80°F - 140°F (26°C - 60°C)
- Vacation mode\*\* turns tank water heater off while the home is unoccupied, saving energy
- Eco mode\*\* allows user to schedule AutoBooster operation and take advantage of off-peak utility rates saving money on energy bills
- Freeze Protect\*\* overrides vacation and eco modes if the ambient temperature drops below 60°F (15°C) to prevent damage

\*According to testing by an independent test agency, this product can increase hot water delivery by as much as 45% when tested to deliver hot water to a 1.5 GPM shower.

\*\*Does not apply when used with a gas tank

### WARRANTY

- Limited Warranty – 5 Years - Leaks, 1 Year - Parts  
See Use and Care Manual for complete information.



These products meet a stringent set of our company's internally defined sustainability standards



Tested and certified by the Water Quality Association against NSF/ANSI 372 for lead free compliance.

## Tankless Electric Water Heaters

### AUTOBOOSTER



HATB007240

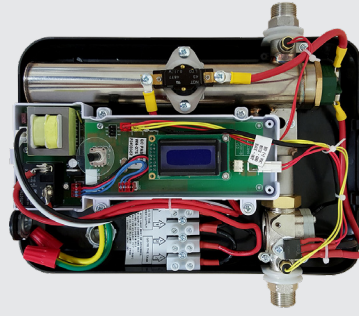
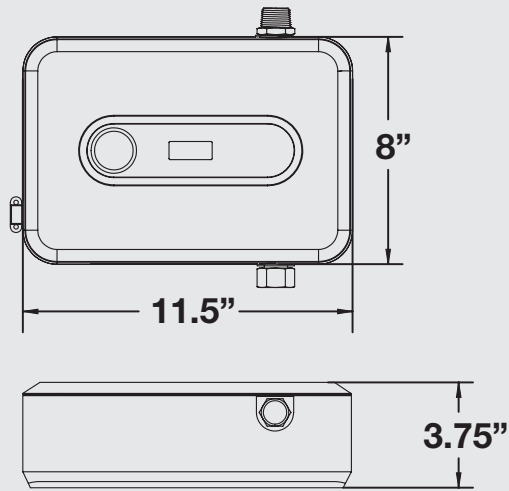
### TANKLESS ELECTRIC SPECIFICATIONS & MINIMUM REQUIREMENTS

Model #	HATB007240	HATB007240
Power (kW)	7.2	5.4
Voltage	240	208
Total Unit Amperage (AMPS)	30 A Max	26 A
Required Number of Dedicated Circuit Breakers	30 A Double Pole	
Phase	1	
Uniform Energy Factor (UEF)	0.96	
Required Wire (75°C Insulation)	10 AWG*	
Water Connections	Inlet: 3/4" NPT female Outlet: 3/4" NPT male	
Dimensions	8"H x 11.5"W x 3.75"D	
Weight	5.4 lbs.	
Operating Pressure	Minimum: 35 PSI   Maximum: 150 PSI	
Flow Activation Rate (GPM)	0.3 GPM	

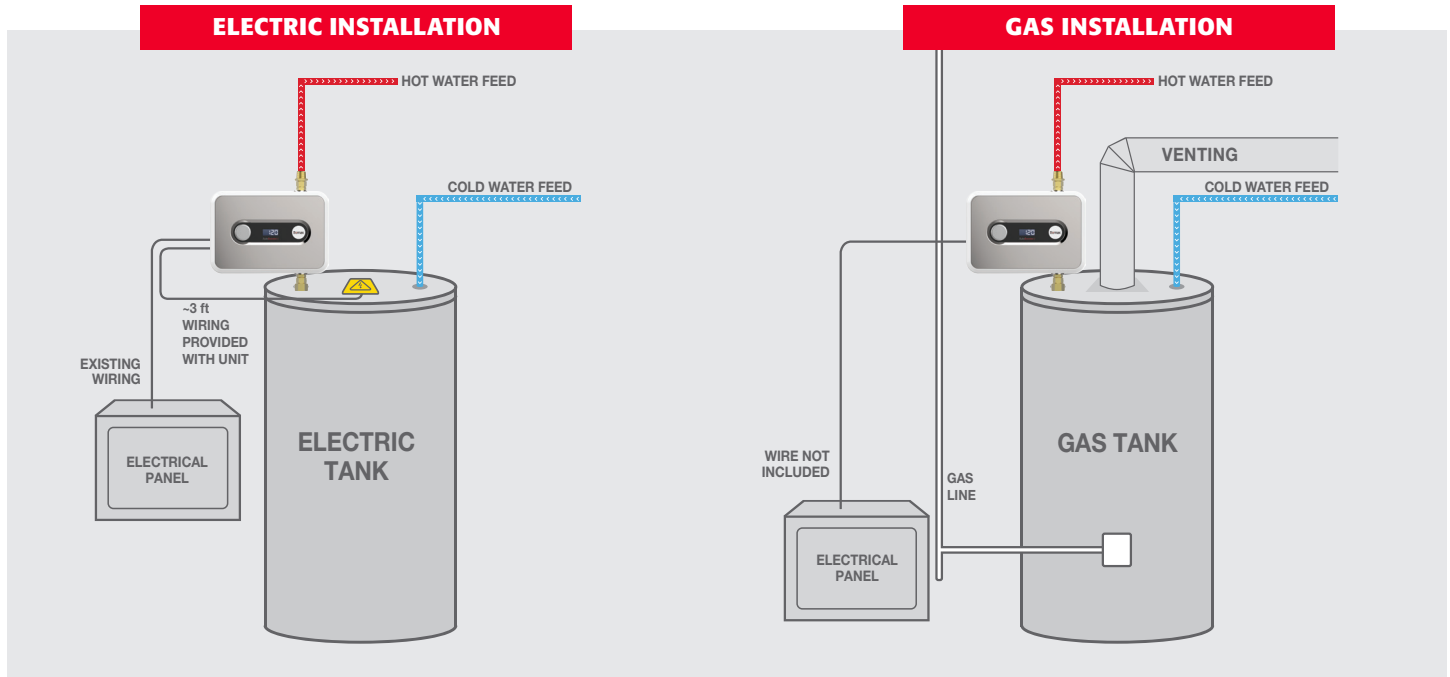
NOTE: See Use and Care Manual for specifications and minimum requirements for installation on gas tanks.

\*AWG - American Wire Gauge

## AutoBooster HATB007240



## INSTALL ON EXISTING ELECTRIC OR GAS TANK HOT WATER OUTLET



• Unit may be wall mounted if space over the tank is limited.  
**NOTE:** Additional wiring may be necessary.