



Russell[®]
By Rheem

PROJECT NAME _____
LOCATION _____
ARCHITECT _____
ENGINEER _____
CONTRACTOR _____
SUBMITTED BY _____ DATE _____

UNIT SUMMARY

Quantity						
Unit Designation						
Model No.						
Total Cooling						
Sensible Cooling						
Air Ent. Evaporator						
Air Lvg. Evaporator						
Heating Input						
Heating Output						
CFM/ESP						
EER/SEER						
Electrical						
Minimum Ampacity						
Min.-Max. Breaker						
Net Unit Weight						
Accessory						
Catalog Form Number						

ACCESSORIES:

NOTES:

Vantix™ Line RGEAZR iR Packaged Gas Electric Cooling Efficiencies up to: 13.4 SEER2 Nominal Sizes: 2 to 5 Tons [7.0 to 17.6 kW]

JOB NAME _____
 CONTRACTOR _____
 ENGINEER _____
 LOCATION _____
 ORDER NO. _____
 SUBMITTED FOR APPROVAL RECORD
 SUBMITTED BY _____
 DATE _____
 UNIT DESIGNATION _____
 MODEL NO. _____

UNIT DATA

COOLING PERFORMANCE

TOTAL CAPACITY* MBH
 SENSIBLE CAPACITY* MBH
 OUTDOOR DESIGN TEMP. °F [°C] DB/WB
 TOTAL SUPPLY AIR CFM [L/s]
 TEMP. OF AIR ENTERING
 EVAPORATOR COIL °F [°C] DB/WB
 POWER INPUT REQUIREMENT kW
 SEER/EER RATING
 (*uses blower motor heat)

HEATING PERFORMANCE

GAS HEAT INPUT CAPACITY MBH
 GAS HEAT OUTPUT CAPACITY MBH
 STEADY STATE EFFICIENCY

SUPPLY AIR BLOWER PERFORMANCE

TOTAL SUPPLY AIR CFM [L/s]
 TOTAL RESISTANCE EXTERNAL
 TO UNIT IWG
 BLOWER SPEED RPM
 POWER OUTPUT REQUIREMENT BHP
 MOTOR RATING HP [W]
 POWER INPUT REQUIREMENT kW

ELECTRICAL DATA

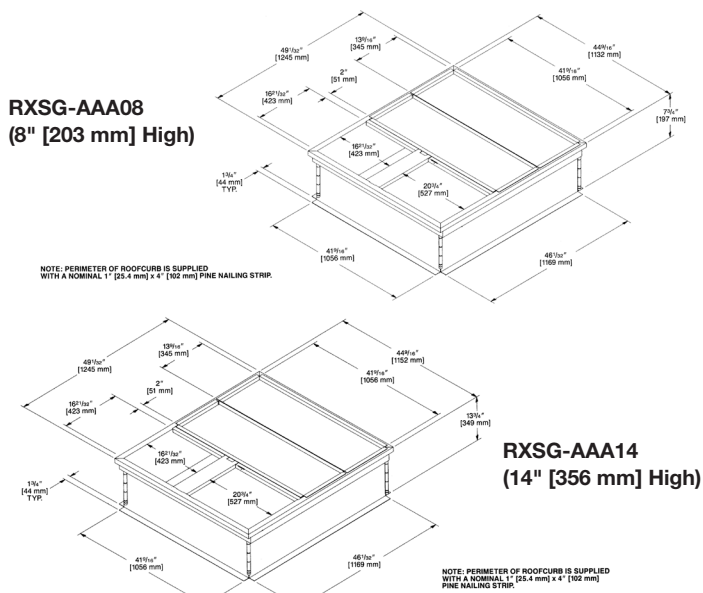
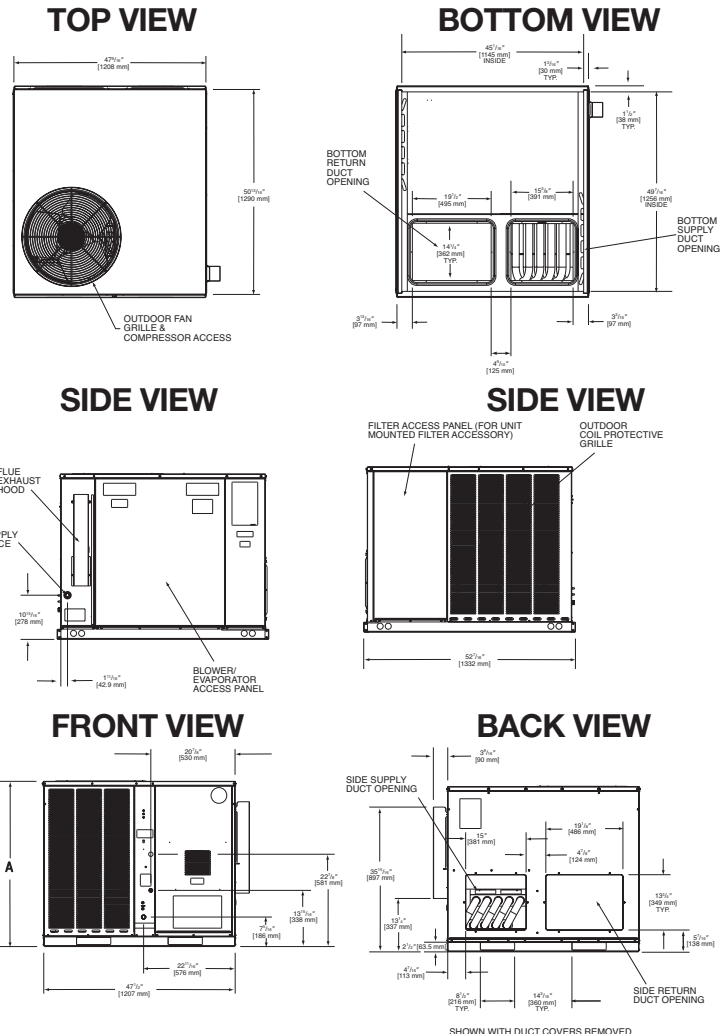
POWER SUPPLY Hz
 TOTAL UNIT AMPACITY AMPS
 MINIMUM WIRE SIZE AWG
 MAXIMUM OVERCURRENT DEVICE
 FUSES HACR BREAKER AMPS

TOTAL UNIT WEIGHT

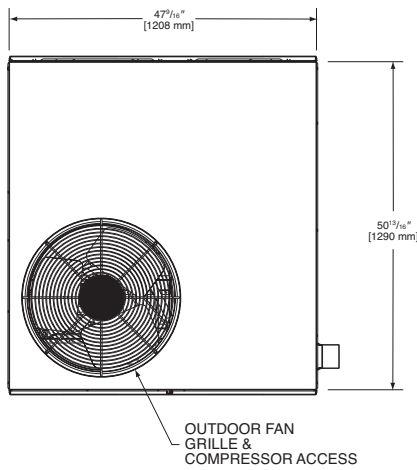
TOTAL OPERATING WEIGHT LBS [kg]
 (including field-installed accessories)

CLEARANCES

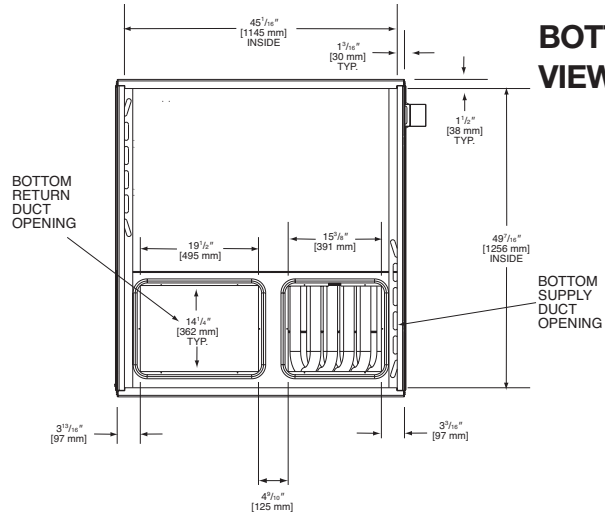
FRONT	48" [1219 mm]
CONDENSER COIL	18" [457 mm]
DUCT SIDE	12" [305 mm]
EVAPORATOR END	36" [914 mm]
ABOVE UNIT	60" [1524 mm]



[] Designates Metric Conversions



TOP VIEW



BOTTOM VIEW

[] Designates Metric Conversions

FEATURES

1. All models feature Scroll compressors for maximum efficiency and quiet operation.
2. Louvered condenser compartment for protecting the coil against yard hazards and/or weather extremes.
3. One-piece top with a drip flange to help keep water out of the unit.
4. Supply and return air openings feature a one-inch tall flange to prevent water migration into the ductwork.
5. Access panels have “weep holes” and channels to further help manage water run-off.
6. Side and down discharge options available on all models. All models are shipped ready for horizontal application.
7. Easily accessible blower section complete with slide-out blower.
8. Refrigerant connections are conveniently located for easy service diagnostics.
9. Micro Channel evaporator and condenser delivers superior performance with less refrigerant charge and less weight than conventional copper tube/aluminum fin coils. In addition the all aluminum construction has superior protection against formicary corrosion and aluminum tube rubbing potential. It is easier to clean and has a more robust surface.
10. Inside the easily accessible furnace compartment is the draft inducer motor. This motor is specially designed for quiet reliable operation. In addition to the draft inducer motor, the in-shot gas burners and manifold efficiently regulate the flow of gas for combustion. These gas/electric units also feature direct-spark ignition and remote flame sensors for added reliability and efficiency.
11. Easily accessible control box.
12. Single point wiring simplifies installation.
13. Our gas/electric package units feature a tubular heat exchanger design. The heat exchanger is backed by a 10 year limited warranty. Models with a stainless steel heat exchanger installed in a residential application are backed by a limited lifetime warranty.
14. Thermal expansion valve standard on all models for superior superheat control, reliability, and energy efficiency at all operating conditions.
15. Filter drier standard on all models (not shown).
16. Rugged baserail included for improved installation and handling
17. Complete factory charged, wired and run tested.
18. Molded compressor plugs.
19. A double sloped evaporator coil drain pan assures all water is removed from the unit to improve indoor air quality.

FIELD INSTALLED ACCESSORIES

Roofcurb RXSG-AAA08 (8" [203 mm] Height).....	<input type="checkbox"/>	Filter Kit RXRY-B01	<input type="checkbox"/>
Roofcurb RXSG-AAA14 (14" [356 mm] Height).....	<input type="checkbox"/>	Sidewall Rectangular to Round Transition AXMC-BA01.....	<input type="checkbox"/>
Supply & Return Diffusers RXRN-BD15	<input type="checkbox"/>	LP Conversion Kits	
Economizers (Convertible) AXRD-01RACAM3.....	<input type="checkbox"/>	RXGJ-EP84W (White Rodgers Gas Valve).....	<input type="checkbox"/>
Fresh Air Damper AXRF-FAB1 (Motorized-35%).....	<input type="checkbox"/>	RXGJ-EP85H (Honeywell Gas Valve).....	<input type="checkbox"/>
Fresh Air Damper ASRF-FAA1 (Fixed 35%).....	<input type="checkbox"/>	TXGJ-FP28	<input type="checkbox"/>
Rectangular to Round Transition (Downflow)		Low Ambient Control RXRZ-B01	<input type="checkbox"/>
RXMC-CA02 (16" [406 mm] Ducts)	<input type="checkbox"/>	High Pressure Control RXAB-E01	<input type="checkbox"/>
Rectangular to Round Transition (Downflow)		Low Pressure Control RXAC-C01	<input type="checkbox"/>
RXMC-CA03 (18" [457mm] Ducts)	<input type="checkbox"/>	Canadian High Altitude Kit (For Natural Gas Only)	<input type="checkbox"/>

Before proceeding with installation, refer to installation instructions packaged with each model, as well as complying with all Federal, State, Provincial, and Local codes, regulations, and practices.

5600 Old Greenwood Road
Fort Smith, Arkansas 72908