

Essential Plus[®]

Essential Plus Heavy Duty Power Vent gas water heater offers a larger capacity, a flexible venting option and the flammable vapor detection system

EFFICIENCY

- Recovery Capacity: 72.8 gallons per hour (delivers approximately 127 gallons of hot water in the first hour)**

SELF-DIAGNOSTIC SYSTEM

- Electronic gas control for improved monitoring and service

LOW EMISSIONS

- Eco-friendly burner, low NOx design

FEATURES

- Uses indoor air for combustion; blower exhausts the flue gases
- Standard 110 VAC electrical connection
- Whisper quiet blower
- Offers larger capacities than the standard Power Vent

FLAMMABLE VAPOR DETECTION SYSTEM

- Exclusive air/fuel shut-off device for double protection
- Maintenance free – no filter to clean
- Disables the heater in the presence of flammable vapor accumulation

FLEXIBLE VENTING OPTIONS

- Long venting lengths up to 100 equivalent feet
- PVC, ABS, or CPVC vent pipe options
- Vertical or horizontal termination

PLUS...

- Quality anode rod helps protect against tank corrosion
- Side water connections for space heating applications
- Temperature and pressure relief valve included
- Low lead compliant
- Durable silicon nitride ignitor (HSI)
- Standard replacement parts

WARRANTY

- 6-Year limited tank and parts warranty*

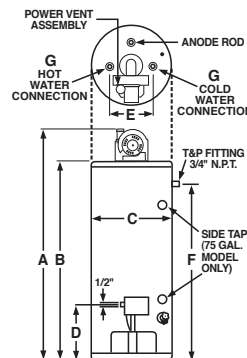
*See Warranty Certificate for complete information

Efficiency | All models tested according to ANSI test procedures, and meet or exceed the thermal efficiency and standby loss requirements of current ASHRAE standard (EPact). Also exceeds energy efficiency codes of all states including California Energy Commission (CEC).

Safety and Construction | Design certified by CSA: For operation at 160 degrees; meets all safety and construction requirements of ANSI Z21.10.3; as an automatic storage or instantaneous water heater; as an automatic circulating tank water heater; and for operation on combustible floors and in alcove installations. All models are North Carolina Code compliant. **Certified for 150 PSI maximum working pressure.**



Essential Plus
Heavy Duty Power Vent
75-Gallon Capacity
75,100 BTU/h
Natural and LP Gas



| DESCRIPTION | | | | FEATURES | | | | | ENERGY INFO. | | | | | | | | |
|-------------|-------------------------|-----------------------|--------------|---------------------------|------|----------------------------------|------|---------------------------|--------------------------|---------------|---------|--------------------|----------------------|-------------------------|--------------------|-------------------|-----------------------------|
| TYPE | NOMINAL GALLON CAPACITY | RATED GALLON CAPACITY | MODEL NUMBER | GAS INPUT IN THOUS. BTU/H | | RECOVERY IN G.P.H. 100° F RISE** | | FIRST HR. DELIVERY G.P.H. | HT. TO TOP OF ASSEMBLY A | TANK HEIGHT B | DIAM. C | HT. TO GAS CONN. D | WATER CONN. CENTER E | HT. TO SIDE T&P VALVE F | WATER CONN. SIZE G | SHIP WEIGHT (LBS) | UNIFORM ENERGY FACTOR (UEF) |
| | | | | NAT. | LP | NAT. | LP | | | | | | | | | | |
| Tall | 75 | 73 | 6G75PV-76FW | 75.1 | - | 72.8 | - | 110 | 72 | 60-1/8 | 26-1/4 | 14-1/2 | 11 | 53-1/4 | 1 | 330 | 0.59 |
| Tall | 75 | 73 | 6G75PV-76PFW | - | 75.1 | - | 72.8 | 110 | 72 | 60-1/8 | 26-1/4 | 14-1/2 | 11 | 53-1/4 | 1 | 330 | 0.59 |

Uniform Energy Factor and rated gallon capacity based on Department of Energy (DOE) requirements.
 **Recovery Capacity is based upon a 100° F water temperature rise and calculated per ANSI Z21.10.3 standards.
 • 160° F Max. temperature setting. • Features side water connections for space heating applications.

Maximum and Minimum Vent Lengths for 3" and 4" Vents

| FROM SEA LEVEL THROUGH 2,000 FT. ABOVE SEA LEVEL | | | | |
|--|----------------------|--|--|----------------------------|
| MODEL | VENT SYSTEM DIAMETER | MIN. ALLOWED EQUIVALENT VENT LENGTHS (EACH PIPE RUN) | MAX. ALLOWED EQUIVALENT VENT LENGTHS (EACH PIPE RUN) | VENT SYSTEM TERMINATION(S) |
| 75-Gallon | 3 Inches | 10 Feet | 50 Feet | 90° Elbow |
| | 4 Inches | 10 Feet | 100 Feet | 90° Elbow |

For the 3" and 4" vent, one 90° elbow is approximately equal to 5 feet of pipe. One 45° elbow is approximately equal to 2.5 feet of pipe.
NOTICE: The mixing of 3" and 4" vent pipe is not recommended. If 4" pipe is used, a 3" to 4" reducer fitting is recommended at the rubber coupling.
This water heater is supplied with a 3" Schedule 40 PVC 90° vent terminal. When venting with 4" pipe, a Schedule 40 PVC 90° vent terminal must be used. Screens for both 3" and 4" vent terminals have been included.