



Vertical and horizontal point-of-use water heaters with shorter heating time and factory installed heavy duty mounting brackets

Performance

- FHR: 50 - 105 liters, based on liter capacity
- Recovery rate is 35 Liters at a 32 degree Celsius rise

Longer Life

- Magnesium anode rod that ensures long tank life

Features

- Durable copper heating element easy for replacement
- An integral over-temperature safety device and a childproof automatic thermostat are featured on all models
- Degree Of Protection IPX4
- Space saving design for installation in limited spaces
- Installed easily in replacement and new construction applications
- Factory installed heavy duty wall mounting bracket(s) included
- Exclusive tank lining resists corrosion

- Standard pressure relief valve for tank Safety
- Proprietary Class 1 Polyurethane Foam insulation process for superior heat retention
- Maximum tank working pressure of 125 PSI (8.5 BARS)
- All water connections are 1/2"NPT

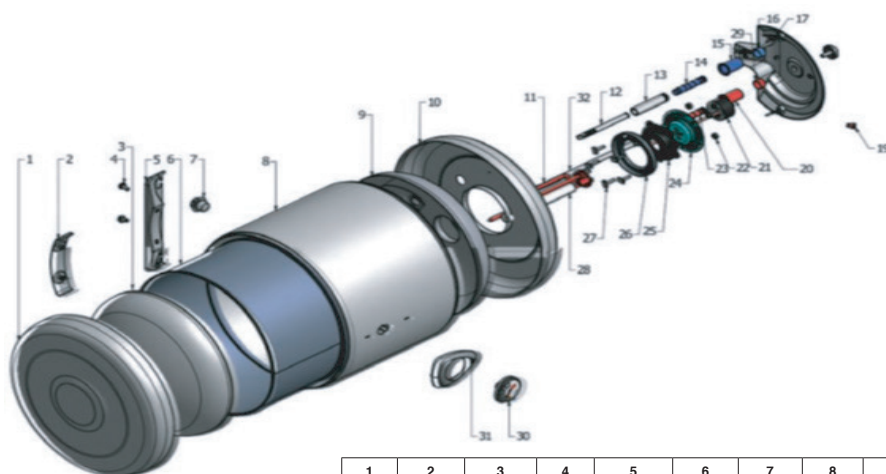
Warranty

- 5-Year limited tank and 1 year parts warranty

MODEL	FULL CAPACITY HEATING TIME (+45°C)
RM-FMG050	120 MINUTES
RM-FMG080	150 MINUTES
RM-FMG100	190 MINUTES



Point-of-Use
 30, 50, 80 & 100-Liter Capacities
 230 Volt AC/ Single Phase
 50 Hz / 60 Hz
 2-Wire Single Phase Electric

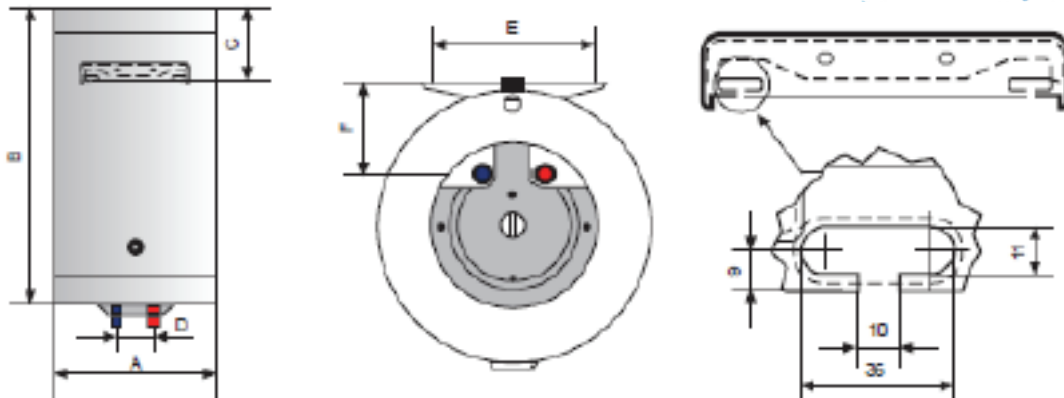


1	2	3	4	5	6	7	8	9	10	11	12	13	14	15	16
Outer Upper Cover	Inner Hanging	Inner Upper Dome	Screw M8*16	Outer Hanging	Inner Cylinder	Cover Foam Injection	Outer Cylinder	Inner Lower Dome	Lower Cover	Heating Element	Inlet Tube	1/2" Pipes	Spacer Tub (Blue)	Plastic Cover (Blue)	Plug for Steel Tube (Blue)
17	18	19	20	21	22	23	24	25	26	27	28	29	30	31	32
Fixtion Screw 4.2*13	Electrical Cover	Indicated Lamp	Plastic Cover (Red)	Thermostat	5 Nut's M6*1.25	Spacer Tube (Red)	Heater Flange	Gasket	Flange Tank	5 Screw's M 6*1.25	MG Anode	Plug for Steel Tube	Thermostat	Thermometer Frame	Outlet Tube

In keeping with its policy of continuous progress and product improvement, Rheem reserves the right to make changes without notice.

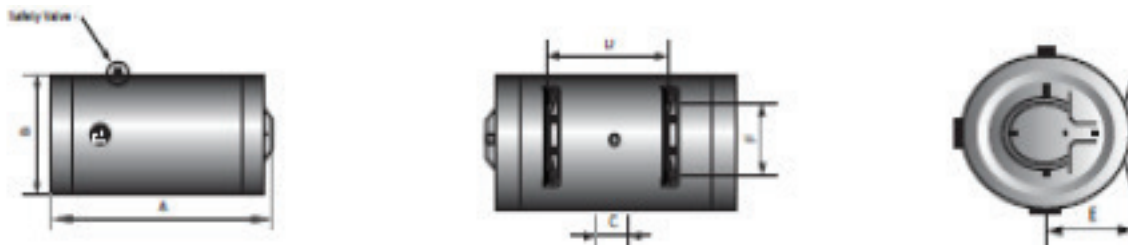


VERTICAL TYPE - WALL MOUNTED



MODEL	STORAGE CAPACITY		VOLTAGE (V)	POWER (W)	PACKING DIMENSIONS (MM)	SHIPPING WEIGHT		A (MM)	B (MM)	C (MM)	D (MM)	E (MM)	F (MM)
	LIT.	GAL.				LBS	KG						
RM-FMR030-VF	30	8	230	1500	410 x 386 x 532	23	11	370	475	189	100	240	113
RM-FMG050-VF	50	13	230	1500	490 x 480 x 590	33	17	450	496	190	100	240	136
RM-FMG080-VF	80	21	230	2000	490 x 480 x 802	44	23	450	700	190	100	240	136
RM-FMG100-VF	100	26	230	2000	490 x 480 x 947	55	26	846	846	190	100	240	136

HORIZONTAL TYPE - WALL MOUNTED



MODEL	STORAGE CAPACITY		VOLTAGE (V)	POWER (W)	PACKING DIMENSIONS (MM)	SHIPPING WEIGHT		A (MM)	B (MM)	C (MM)	D (MM)	E (MM)	F (MM)
	LIT.	GAL.				LBS	KG						
RM-FMG050-VF	50	13	230	1500	490 x 480 x 603	33	17	541	450	100	145	237	240
RM-FMG080-VF	80	21	230	2000	490 x 480 x 837	44	23	766	450	100	370	237	240
RM-FMG100-VF	100	26	230	2000	490 x 480 x 984	55	26	914	450	100	517	237	240

In keeping with its policy of continuous progress and product improvement, Rheem reserves the right to make changes without notice.