

VANTIX™



RussellByRheem.com/Vantix

Maximize Your Home **Comfort**

Get the most out of your space and maximize your savings with the Russell® by Rheem Vantix™ Line of Residential Packaged Gas Electric Units, Heat Pumps and Air Conditioners.



R E S I D E N T I A L P A C K A G E D M O D E L S G U I D E

Outdoor Equipment for Indoor Comfort



PEACE-OF-MIND PERFORMANCE

Relax, you're covered by some of the best warranties in the industry¹—up to 10 Year Conditional Parts in single-phase, residential applications².



REDUCED EMISSIONS

Households generate 72%³ of greenhouse gas emissions, so switching to a heat pump, can make a big difference for the environment—today. Plus, the packaged heat pumps, air conditioners and gas electric units all feature a MicroChannel refrigerant system with all-aluminum evaporator and condenser coils that fight corrosion and provide superior heat transfer capabilities for a more dependable performance—while using up to 58% less refrigerant than similar models.



HIGH COMFORT

Two-stage⁴ (67% and 100%) or single-stage⁵ technology work to continuously meet your ever-changing heating and cooling needs. You'll enjoy steady temperature and advanced humidity control that combine to exceed your optimal comfort expectations.



Helping You Live Both Comfortably and Sustainably

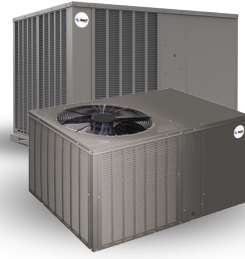
The Russell by Rheem Vantix Line RHPXZS Residential Packaged Heat Pump has earned our Sustainability Standout[®] seal, indicating it's among the best of the best. We created the seal to help you more easily find the products that save energy, save money and save the planet.



Among Packaged Gas Electric Units, Heat Pumps and Air Conditioners, These Are Stars

Earning ENERGY STAR[®] recognition means products meet strict energy efficiency guidelines set by the U.S. Environmental Protection Agency and several of the Russell by Rheem Vantix Packaged Gas Electric Units, Heat Pumps and Air Conditioners are ENERGY STAR[®] certified, offering annual energy cost savings⁶.

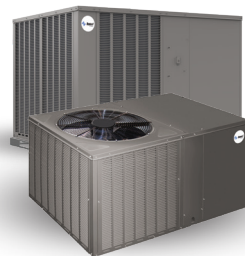
Russell[®] by Rheem Vantix[™] Line Residential Packaged Air Conditioners



Keep cool, even when the utility bill arrives, with the Russell by Rheem Vantix Line of Residential Packaged Air Conditioners. Each model is designed to provide dependable comfort and savings.

	RAC(A/X)ZS	RACAZR	RACBZR
Cooling Efficiencies ⁷	15.2 SEER2 / 11.5 EER2 (1-phase & 3-phase)	13.4 SEER2 / 10.6 EER2 (1-phase & 3-phase)	13.4 SEER2 / 10.6 EER2 (1-phase only)
Refrigerant Type	R-410A	R-410A	R-410A
Nominal Sizes	2–5 tons (7.0–17.6 kW)	2–5 tons (7.0–17.6 kW)	2–5 tons (7.0–17.6 kW)
Gross Cooling Capacity	24.2 to 59 kBTU	23.6 to 58.5 kBTU	24 to 60 kBTU
Cabinet Type Designator	iR	iR	iR
IRA of 2023 – Eligible for Federal Tax Credit, 2023 & 2024 Tax Years ⁸	Yes	No	No
Sound Rating (as low as) ⁹	71 dB	75 dB	75 dB
ENERGY STAR [®] Certified ⁶	Yes	No	No
Compressor Type	Two-stage Scroll	Single-stage Scroll (4- and 5-ton models feature two-stage)	Single-stage Scroll
Evaporator Coil Type	MicroChannel	MicroChannel	MicroChannel
Condenser Coil Type	MicroChannel	MicroChannel	MicroChannel
Airflow Type	Convertible	Convertible	Dedicated Horizontal
Blower Motor Type	Constant Torque	Constant Torque	Constant Torque
Fan Motor Type	PSC	PSC	PSC
Heater Kit	Field-installed option	Field-installed option	Field-installed option
1-Phase Option	Yes (all tonnages)	Yes (all tonnages)	Yes (all tonnages)
3-Phase Option	Yes (not available on 2-ton models)	Yes (not available on 2-ton models)	No
Compatible Thermostat	Two-stage 24V	Two-stage 24V (4- and 5-ton) Single-stage 24V (2- to 3.5-ton models)	Single-stage 24V
Limited Warranty ¹	Conditional Parts – 10 years (1-phase, residential applications) (registration required) Compressor – 10 years (1-phase, residential applications), 5 years (1- and 3-phase, commercial applications) Parts – 1 year (commercial applications)	Conditional Parts – 10 years (1-phase, residential applications) (registration required) Compressor – 10 years (1-phase, residential applications), 5 years (1- and 3-phase, commercial applications) Parts – 1 year (commercial applications)	Conditional Parts – 10 years (1-phase, residential applications) (registration required) Compressor – 10 years (1-phase, residential applications)

Russell[®] by Rheem Vantix[™] Line Residential Packaged Heat Pumps



Bring home year-round sustainable comfort with the Russell by Rheem Vantix Line of Residential Packaged Heat Pumps. Each model is designed to provide efficient and consistent heating and cooling technology, all while contributing to reduced household emissions.

	RHPXZS	RHP(A/X)ZR	RHPBZR
Cooling Efficiencies ⁷	15.2 SEER2 / 11.5 EER2 / 7.2 HSPF2 (1-phase & 3-phase)	13.4 SEER2 / 10.6 EER2 / 6.7 HSPF2 (1-phase & 3-phase)	13.4 SEER2 / 10.6 EER2 / 6.7 HSPF2 (1-phase only)
Refrigerant Type	R-410A	R-410A	R-410A
Nominal Sizes	2–5 tons (7.0–17.6 kW)	2–5 tons (7.0–17.6 kW)	2–5 tons (7.0–17.6 kW)
Gross Cooling Capacity	24 to 60 kBTU	23.8 to 59.5 kBTU	24 to 58.5 kBTU
Cabinet Type Designator	iR	iR	iR
IRA of 2023 – Eligible for Federal Tax Credit, 2023 & 2024 Tax Years ⁸	Yes, South Only	No	No
IRA of 2023 – Eligible for Electric Home Rebate Program, 2024 Tax Year ⁸	Yes	No	No
Sustainability Standout [®]	Yes	No	No
Sound Rating (as low as) ⁹	77 dB	74 dB	77 dB
ENERGY STAR [®] Certified ⁶	Yes	No	No
Compressor Type	Two-stage Scroll	Single-stage Scroll (two-stage on 5-ton model)	Single-stage Scroll (5-ton model features two-stage)
Evaporator Coil Type	MicroChannel	MicroChannel	Tube-fin
Condenser Coil Type	MicroChannel	MicroChannel (3.5- to 5-ton) Tube-fin (2- to 3-ton)	Tube-fin
Airflow Type	Convertible	Convertible	Dedicated Horizontal
Blower Motor Type	Constant Torque	Constant Torque	Constant Torque
Fan Motor Type	PSC (2- to 4-ton) ECM (5-ton)	PSC	PSC
Heater Kit	Factory- or Field-installed Option	Factory- or Field-installed Option	Factory- or Field-installed Option
1-Phase Option	Yes (all tonnages)	Yes (all tonnages)	Yes (all tonnages)
3-Phase Option	Yes (not available on 2-ton models)	Yes (5-ton model only)	No
Compatible Thermostat	Two-stage 24V	Two-stage 24V (5-ton) Single-stage 24V (2- to 4-ton)	Two-stage 24V (5-ton) Single-stage 24V (2- to 4-ton)
Limited Warranty ¹	Conditional Parts – 10 years (1-phase, residential applications) (registration required) Compressor – 10 years (1-phase, residential applications), 5 years (1- and 3-phase, commercial applications) Parts – 1 year (commercial applications)	Conditional Parts – 10 years (1-phase, residential applications) (registration required) Compressor – 10 years (1-phase, residential applications), 5 years (1- and 3-phase, commercial applications) Parts – 1 year (commercial applications)	Conditional Parts – 10 years (1-phase, residential applications) (registration required) Compressor – 10 years (1-phase, residential applications)

Russell[®] by Rheem Vantix[™] Line Residential Packaged Gas Electric



Year-round comfort has never been more convenient—or efficient—with the Russell by Rheem Vantix Line of Residential Packaged Gas Electric Systems. Every model is designed with durability to perform season after season while delivering dependable savings.

	RGE(A/X)ZS	RGEAZR
Cooling Efficiencies ⁷	15.2 SEER2 / 11.5 EER2 (1-phase & 3-phase)	13.4 SEER2 / 10.6 EER2 (1-phase & 3-phase)
Heating Efficiency	81% AFUE ¹⁰	81% AFUE ¹⁰
Refrigerant Type	R-410A	R-410A
Nominal Sizes	2–5 tons (7.0–17.6 kW)	2–5 tons (7.0–17.6 kW)
Gross Cooling Capacity	24.2 to 59 kBTU	23.6 to 58.5 kBTU
Cabinet Type Designator	iR	iR
Bluetooth Connectivity ¹¹	Yes	No
IRA of 2023 – Eligible for Federal Tax Credit, 2023 & 2024 Tax Years ⁸	Yes	No
Sound Rating (as low as) ⁹	71 dB	75 dB
EcoNet [®] Enabled	Yes	No
ENERGY STAR [®] Certified ⁶	Yes	No
Compressor Type	Two-stage Scroll	Single-stage Scroll (4- and 5-ton models feature two-stage)
Evaporator Coil Type	MicroChannel	MicroChannel
Condenser Coil Type	MicroChannel	MicroChannel
Airflow Type	Convertible	Convertible
Blower Motor Type	Constant CFM	Constant Torque
Fan Motor Type	PSC	PSC
Ultra Low NOx Option	No	Yes (all tonnages)
Low NOx Option	Yes (all tonnages)	Yes (all tonnages)
1-Phase Option	Yes (all tonnages)	Yes (all tonnages)
3-Phase Option	Yes (not available on 2-ton models)	Yes (not available on 2-ton models)
Stainless Steel Heat Exchanger	Yes (factory-installed option)	Yes (factory-installed option)
Compatible Thermostat	EcoNet Smart Thermostat, Two-stage 24V	Two-stage 24V (4- and 5-ton) Single-stage 24V (2- to 3.5-ton)
Heating Input	2-ton Model 60 kBTU 3-ton Model 60, 80 and 100 kBTU 4- and 5-ton Models, (1st Stage / 2nd Stage): 56 / 80 to 70 / 100 kBTU	2- and 2.5-ton Models 40, 60 and 80 kBTU 3-ton Model 60, 80 and 100 kBTU 3.5- to 5-ton Models 80 and 100 kBTU
Heating Output	2-ton Model 48.6 kBTU 3-ton Model 48.6 to 81 kBTU 4- and 5-ton Models, (1st Stage / 2nd Stage): 45.3 / 64.8 to 56.7 / 81 kBTU	2- and 2.5-ton Models 32 to 65 kBTU 3-ton Model 48 to 81 kBTU 3.5- to 5-ton Models 65 to 81 kBTU
Feature Highlights	Russell by Rheem Contractor and EcoNet Apps ¹² , built-in EcoNet and Bluetooth technology allow for easy install and diagnostics — Proven Direct Spark Ignition (DSI) for reliability and longevity	Proven Direct Spark Ignition (DSI) for reliability and longevity
Limited Warranty ¹	Heat Exchanger – 10 years (factory standard), 20 years (stainless steel 1-phase models, commercial application), limited lifetime (1-phase, residential applications) (registration required) Conditional Parts – 10 years (1-phase, residential applications) (registration required) Compressor – 10 years (1-phase, residential applications), 5 years (1- and 3-phase, commercial applications) Parts – 1 year (commercial applications)	Heat Exchanger – 10 years (factory standard), 20 years (stainless steel 1-phase models, commercial application), limited lifetime (1-phase, residential applications) (registration required) Conditional Parts – 10 years (1-phase, residential applications) (registration required) Compressor – 10 years (1-phase, residential applications), 5 years (1- and 3-phase, commercial applications) Parts – 1 year (commercial applications)

Super Advanced. Super Easy.

The Russell by Rheem Vantix™ Line RGE(A/X)ZS Packaged Gas Electric Unit is EcoNet- and Bluetooth-enabled for simplified operation, installation and service.



It operates with the easy-to-use EcoNet Smart Thermostat, which optimizes system performance and provides a new level of protection and precision comfort **with features like:**

- Communication with latest sensor technology
- Control of your thermostat from anywhere via the EcoNet App¹²
- Alerts sent directly to your phone or email



Built-in Bluetooth® connectivity¹¹ makes it faster and easier for your contractor to install and service your new system. This can help lower your costs and help make your home comfortable again—fast.



Federal Incentives Available (conditions apply)

As part of the Inflation Reduction Act of 2022, homeowners can now take advantage of enhanced tax incentives and a new state-administered consumer rebate program. Certain Russell by Rheem Residential Packaged models may be eligible for the Energy Efficient Home Improvement Tax Credit (25C)⁸ and Russell by Rheem Residential Packaged Heat Pumps may be eligible for the High Efficiency Electric Home Rebate Program.⁸

Visit RussellByRheem.com/Federal-Incentives to view qualifying equipment and for complete details and conditions.

A History of Innovation



We are proudly backed by nearly 100 years in the HVAC industry. We continue to give homeowners and business owners the innovative products that meet their needs and budget to keep people comfortable day after day—just as we've done for nearly a century.



Russell by Rheem USA
5600 Old Greenwood Road
Fort Smith, Arkansas 72908

Rheem Sales Company, Inc. manufactures the Russell by Rheem brand of residential heating & cooling products. In keeping with its policy of continuous progress and product improvement, Rheem reserves the right to make changes without notice.

¹Registration is required for the conditional parts warranty (if applicable). For complete details of the limited and conditional warranties, including applicable terms and conditions, contact your local Contractor or go to RussellByRheem.com for a copy of the product warranty certificate. ²Refer to the chart for specific warranty terms by product. ³Residential Building Electrification in CA: Consumer economics, greenhouse gases and grid impacts, April 2019. ⁴Applies to the RHPXZS, RAC(A/X)ZS and RGE(A/X)ZS models. ⁵Applies to RHP(A/X)ZR, RHPBZR, RACAZR, RACBZR and RGEAZR models. ⁶Proper sizing and installation of equipment is critical to achieve optimal performance. Ask your contractor for details or visit EnergyStar.gov. ⁷SEER2 (Seasonal Energy Efficiency Rating) / EER2 (Energy Efficiency Ratio) / HSPF2 (Heating Seasonal Performance Factor): The higher the SEER2 / EER2 / HSPF2 rating, the more efficient the unit. ⁸Energy Efficient Home Improvement Tax Credits (25C) and High Efficiency Electric Home Rebates are dependent on state participation and available funding; Visit RussellByRheem.com/Federal-Incentives for complete details. ⁹Based on Internal R&D Testing, May 2023. Sound levels are also dependent on proper installation and location of product. ¹⁰AFUE (Annual Fuel Utilization Efficiency): The higher the AFUE, the more efficient the unit. ¹¹Bluetooth functionality applies to the heating section only. ¹²WiFi broadband internet connection required. Download the EcoNet® App from the App Store® or Google Play® to set up your EcoNet Smart Thermostat. Receipt of notifications depend on home WiFi setup. Amazon, Alexa and all related logos are trademarks of Amazon.com, Inc. or its affiliates.

The Bluetooth® word mark and logos are registered trademarks owned by Bluetooth SIG, Inc. and any use of such marks by Rheem is under license. Other trademarks and trade names are those of their respective owners.

