



THERMAFORCE™

INTRODUCING THE WHOLE HOME HEATING SOLUTION **SUPER HIGH EFFICIENCY CONDENSING COMBI BOILER**

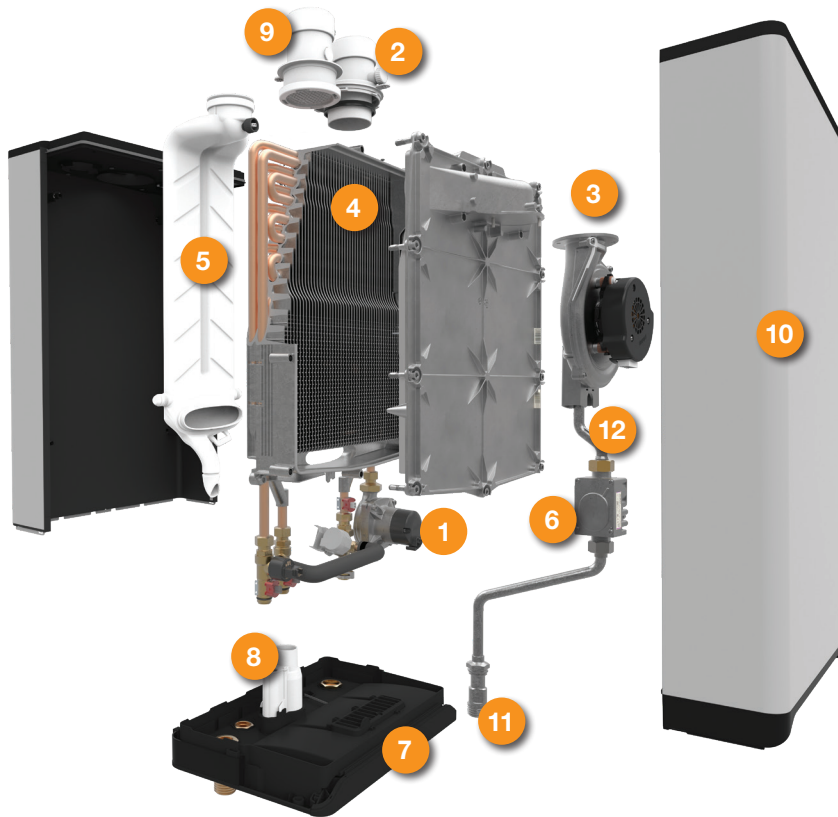
ThermaForce™ is a single condensing platform for combi boilers, boilers and tankless water heaters designed for ultimate serviceability with four or five moving parts. Plus, its sleek European design, wireless cascading and patented labyrinth heat exchanger set it apart from the competition.

**2 IN 1
DESIGN**
SPACE & WATER
HEATING



Combi Exclusives

- **5 Moving Parts** – Fan, Bypass Valve, Pump, Gas Valve, and Damper
- Designed with cutting-edge, solid-state electronics to control the gas valve, fan and ignition, ThermaForce™ reduces the number of moving parts for ultimate serviceability.



CRCBH-L SERIES

- | | |
|----|-------------------|
| 1 | Pump (ECM) |
| 2 | Exhaust Fitting |
| 3 | Burner Fan |
| 4 | Heat Exchanger |
| 5 | Rear Flue Duct |
| 6 | Gas Valve |
| 7 | Touch Pad Control |
| 8 | Condensate Trap |
| 9 | Air Intake |
| 10 | Cover |
| 11 | Inlet Gas Line |
| 12 | Outlet Gas Tube |



These products meet a stringent set of our internally defined sustainability standards.



Rheem.ca/ThermaForce

In keeping with its policy of continuous progress & program improvement, Rheem reserves the right to make changes without notice.

PRINTED IN THE USA • 11/23 • WP • TK-TF-RHCBH-FS-CAN