



# L-SERIES

## INTRODUCING THE WHOLE HOME HEATING SOLUTION **SUPER HIGH EFFICIENCY CONDENSING TANKLESS WATER HEATER**

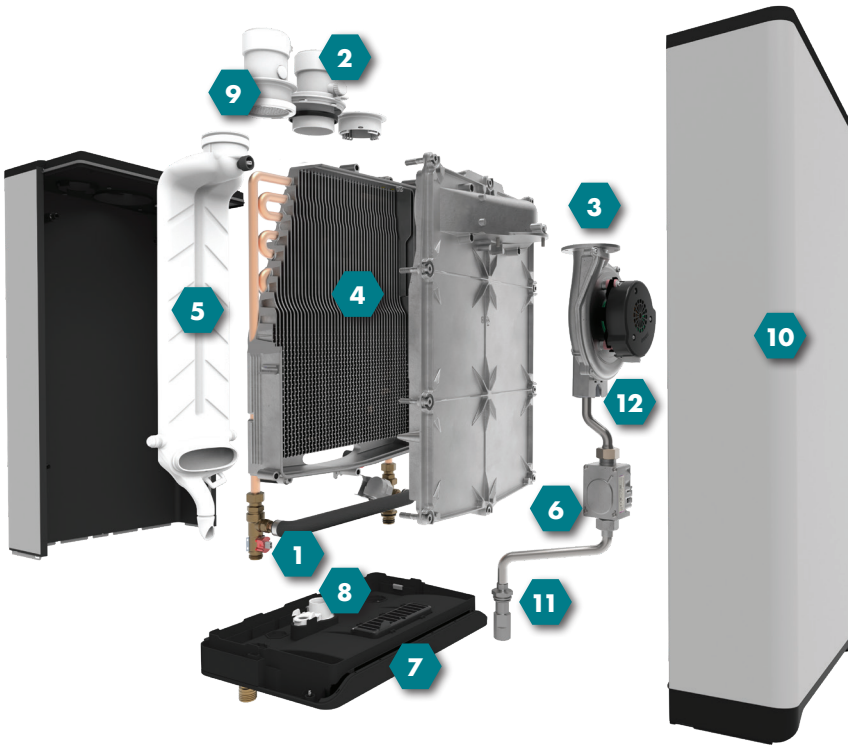
L-Series is a single condensing platform for combi boilers, boilers and tankless water heaters designed for ultimate serviceability with four or five moving parts. Plus, its sleek European design, wireless cascading and patented labyrinth heat exchanger set it apart from the competition.

SAVE UP TO  
**32%**  
ANNUALLY  
IN ENERGY  
COSTS



### Tankless Key Benefits

- **4 Moving Parts** – Fan, Bypass Valve, Gas Valve, and Damper
- Designed with cutting-edge, solid-state electronics to control the gas valve, fan and ignition, L-Series reduces the number of moving parts for ultimate serviceability.
- **Premium performance in extreme hard water regions** – cast aluminum heat exchanger protects copper waterways and minimizes lime formation.



### CRUTGH-L SERIES

1	Bypass Valve
2	Exhaust Fitting
3	Burner Fan
4	Heat Exchanger
5	Rear Flue Duct
6	Gas Valve
7	Touch Pad Control
8	Condensate Trap
9	Air Intake
10	Cover
11	Inlet Gas Line
12	Outlet Gas Tube



[Ruud-Canada.ca/L-Series](http://Ruud-Canada.ca/L-Series)

*In keeping with its policy of continuous progress & program improvement, Ruud reserves the right to make changes without notice.*

PRINTED IN THE USA • 11/23 • WP • TKR-RUTGH-L-FS-CAN