

SUSTAINABILITY

INNOVATING.

One Sustainable Product At A Time

To create sustainable products, it takes dedication, rigid adherence to best practices and a relentless passion for making the world a better place. So we've incorporated sustainable thinking into our Product Development Process (PDP). Along the way, we've developed some visual methods for helping homeowners and business owners find the products that will reduce their environmental impact and support their own sustainability goals.



DEGREE OF INNOVATION

Reduce manufacturing greenhouse gas footprint by 50%.



DEGREE OF EFFICIENCY

Reduce greenhouse gas emissions by 50% and achieve zero waste to landfill.



DEGREE OF LEADERSHIP

Train plumbers and contractors on sustainable products of sustainable installation and recycling best practices.



TRUSTED COMFORT FOR OVER 100 YEARS

For over 100 years, Rheem has been delivering reliable hot water solutions trusted by families around the world.



TRUSTED FOR GENERATIONS



PROVEN GLOBAL QUALITY



CHOSEN BY FAMILIES WORLDWIDE



LOCAL SALES & SERVICE SUPPORT

RELIABLE HOT WATER FOR EVERYDAY FAMILY USE

BUILT TO LAST WITH QUALITY MATERIALS

ENERGY-EFFICIENT FOR LOWER ELECTRICITY COSTS

BACKED BY WARRANTY AND LOCAL SUPPORT

From daily showers to family routines, Rheem delivers comfort you can rely on today and for years to come.



engineered for life™

RELIABLE WARMTH

Ready When Your Family Needs It

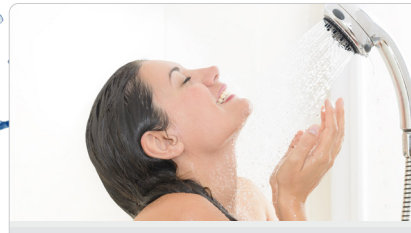
G10 SERIES ELECTRIC INSTANT WATER HEATER

G10 Series offers consistent hot water, ideal for all your warm water needs. With a compact design suitable for any bathroom or applications, and a powerful heating capacity, it guarantees a comfortable and uninterrupted experience. Say goodbye to cold showers forever by upgrading to the G10 today.





G10 SERIES ELECTRIC INSTANT WATER HEATER



COMFORT SHOWER



GENTLE FOR FAMILY USE

PRODUCT DIMENSIONS



CONSTANT TEMPERATURE – WITH MINIMUM FLUCTUATION

Consistent and safe showering experience.



STAINLESS STEEL HEATING ELEMENT

Advanced technology ensures no leaks, even under hot water.



STAINLESS STEEL HEATING CHAMBER

High quality materials for easy maintenance and long service life.



ABS CONSTRUCTION

Built to last for years of worry-free showering.



UNLIMITED HOT WATER

Enjoy a luxurious, never-ending stream of hot water.



DIGITAL DISPLAY & INTUITIVE DESIGN

Easy temperature monitoring and operation.



RCD

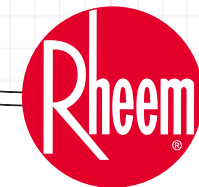
Safeguards against electrical shocks.



IPX5 WATER RESISTANT

Safe showers every time.

WATER HEATER MODEL	G10-35	G10-45
PANEL MATERIALS	ABS	
MATERIAL OF CHAMBER & ELEMENT	Stainless Steel 304	
POWER (kW)	3.5	4.5
VOLTAGE (V)	220 – 240	
FREQUENCY (HZ)	50/60	
RATED PRESSURE (MPa)	0.2	
MINIMUM WATER FLOW RATE (L/MIN)	1.5	
MAXIMUM INLET WATER PRESSURE, MPa (bar)	0.3 (3)	
MINIMUM INLET WATER PRESSURE, MPa (bar)	0.015 (0.15)	
IP RATING	IPX5	
NET WEIGHT (KG)	1.4	
GROSS WEIGHT (KG)	2.2	
PRODUCT SIZE	LENGTH (MM)	215
	WIDTH (MM)	80
	HEIGHT (MM)	360
PACKAGING SIZE	LENGTH (MM)	390
	WIDTH (MM)	125
	HEIGHT (MM)	350



www.RheemPhilippines.com

[Rheem Asia](#)

[Rheem.PH](#)

[Rheem_PH](#)

Product images and specifications are subject to change without prior notice.