



The new degree of comfort.™

# SUBMITTAL COVER SHEET

PROJECT NAME \_\_\_\_\_

LOCATION \_\_\_\_\_

ARCHITECT \_\_\_\_\_

ENGINEER \_\_\_\_\_

CONTRACTOR \_\_\_\_\_

SUBMITTED BY \_\_\_\_\_ DATE \_\_\_\_\_

## UNIT SUMMARY

Quantity						
Unit Designation						
Model No.						
Total Cooling						
Sensible Cooling						
Air Ent. Evaporator						
Air Lvg. Evaporator						
Heating Input						
Heating Output						
CFM/ESP						
EER/SEER						
Electrical						
Minimum Ampacity						
Min.-Max. Breaker						
Net Unit Weight						
Accessory						
Catalog Form Number						

**ACCESSORIES:**

**NOTES:**





# GAS HEAT / ELECTRIC COOLING PACKAGE DOWNFLOW ONLY

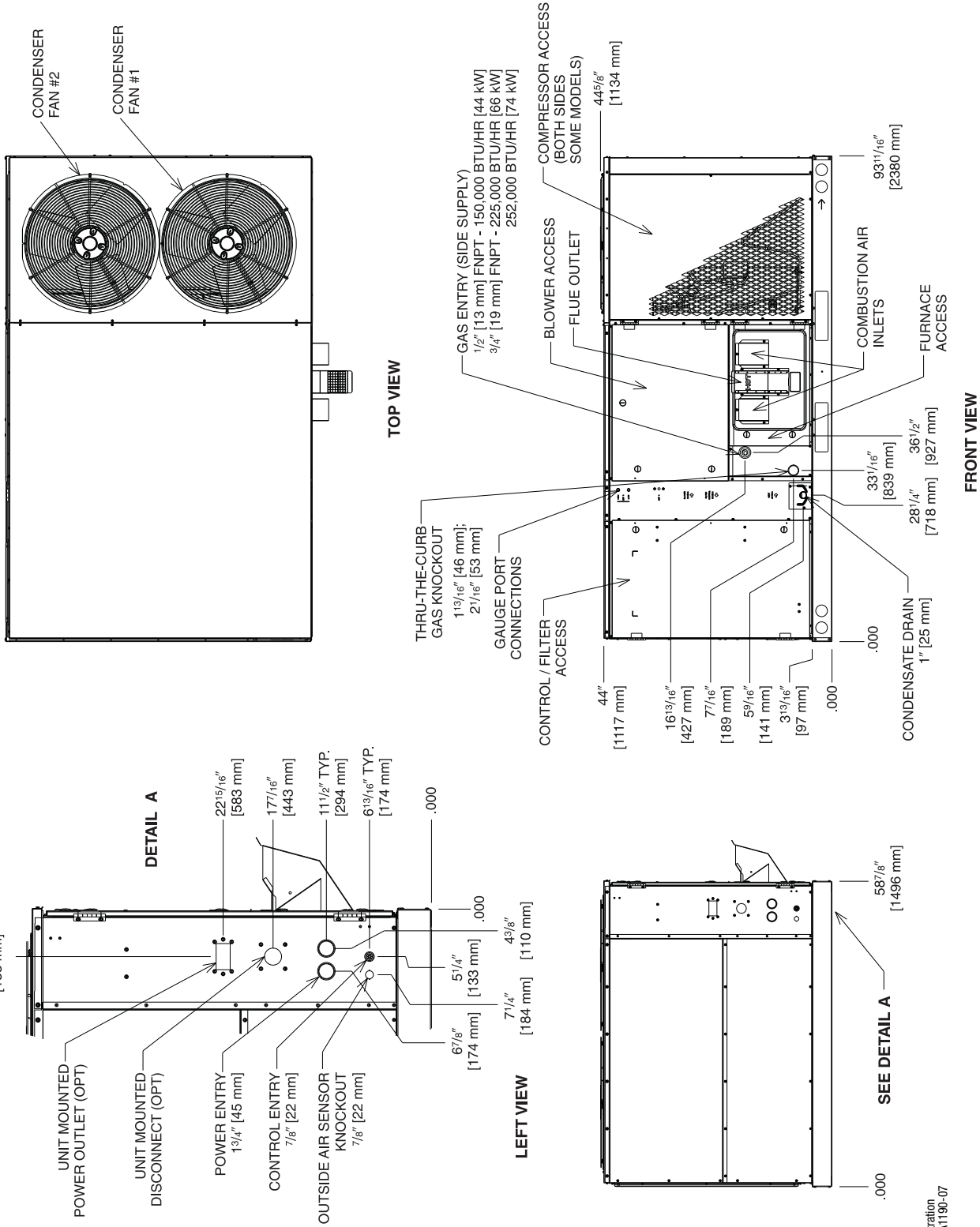
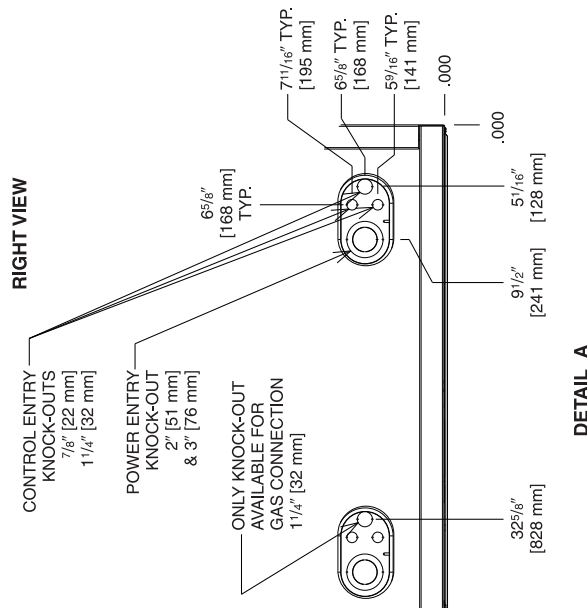
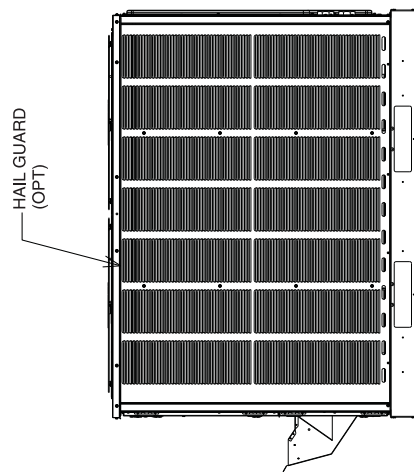
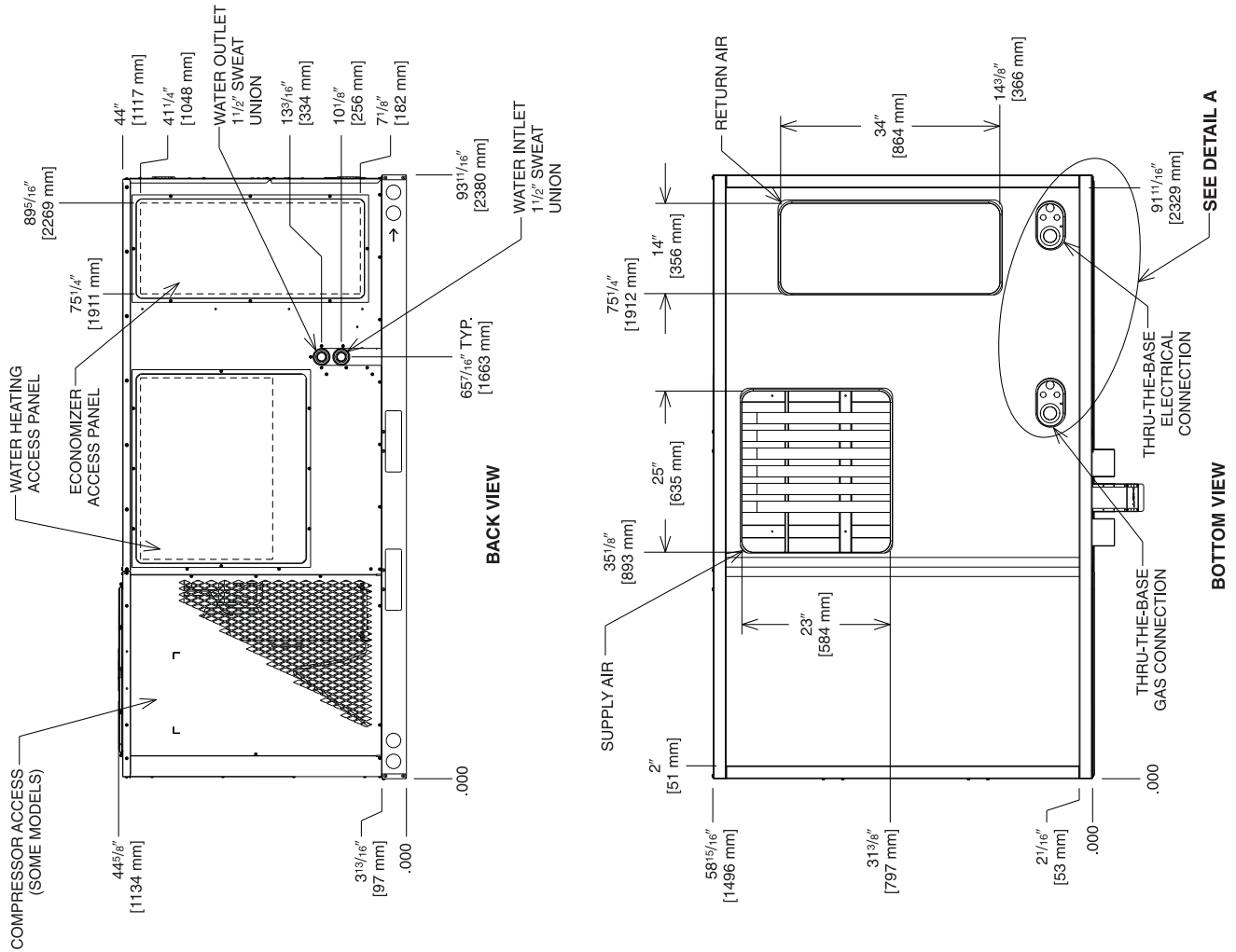


Illustration ST-A1190-07

[ ] Designates Metric Conversions

# GAS HEAT / ELECTRIC COOLING PACKAGE DOWNFLOW ONLY

## BOTTOM VIEW



[ ] Designates Metric Conversions

Illustration  
ST-A1190-08

# GAS HEAT / ELECTRIC COOLING PACKAGE DOWNFLOW ONLY

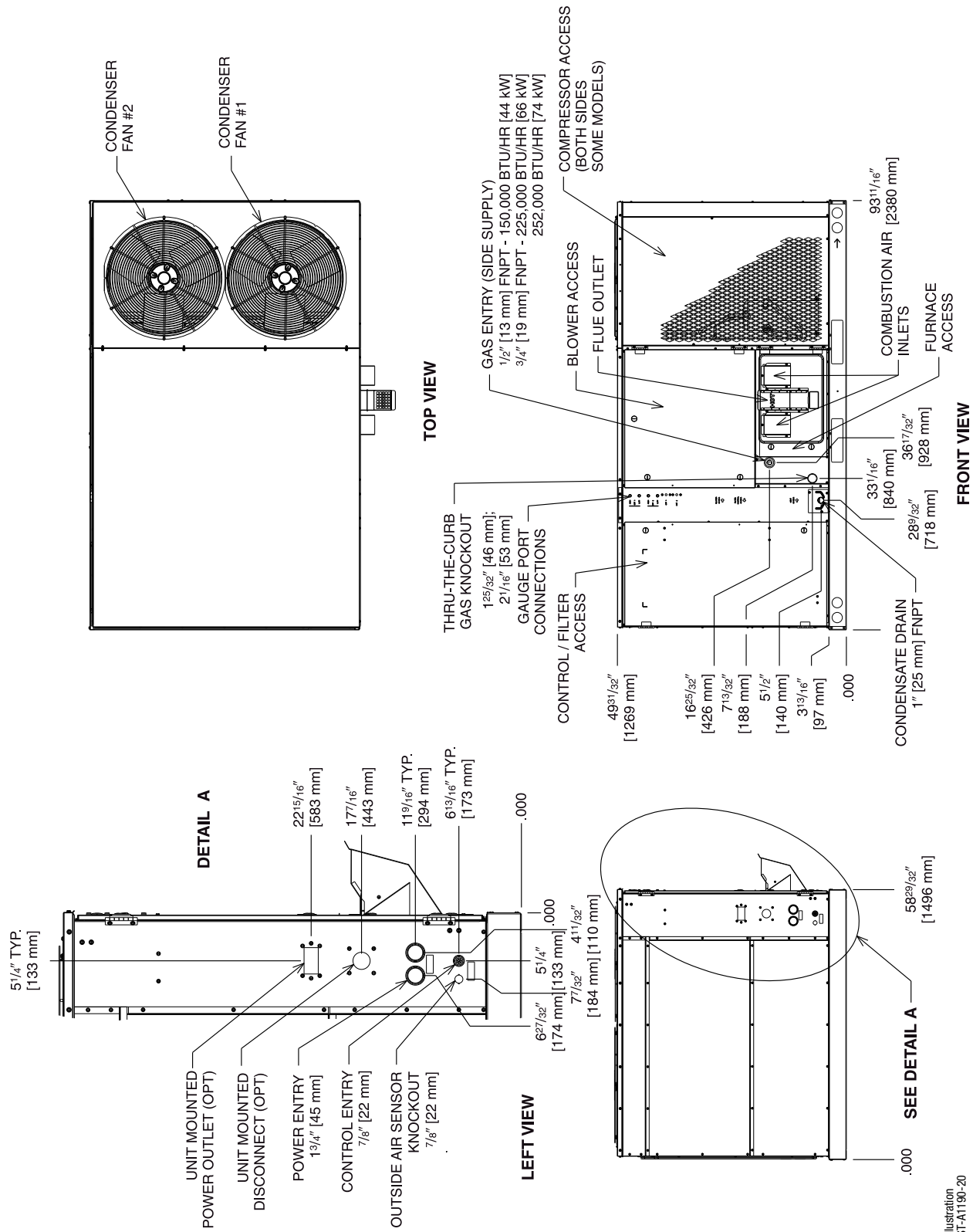
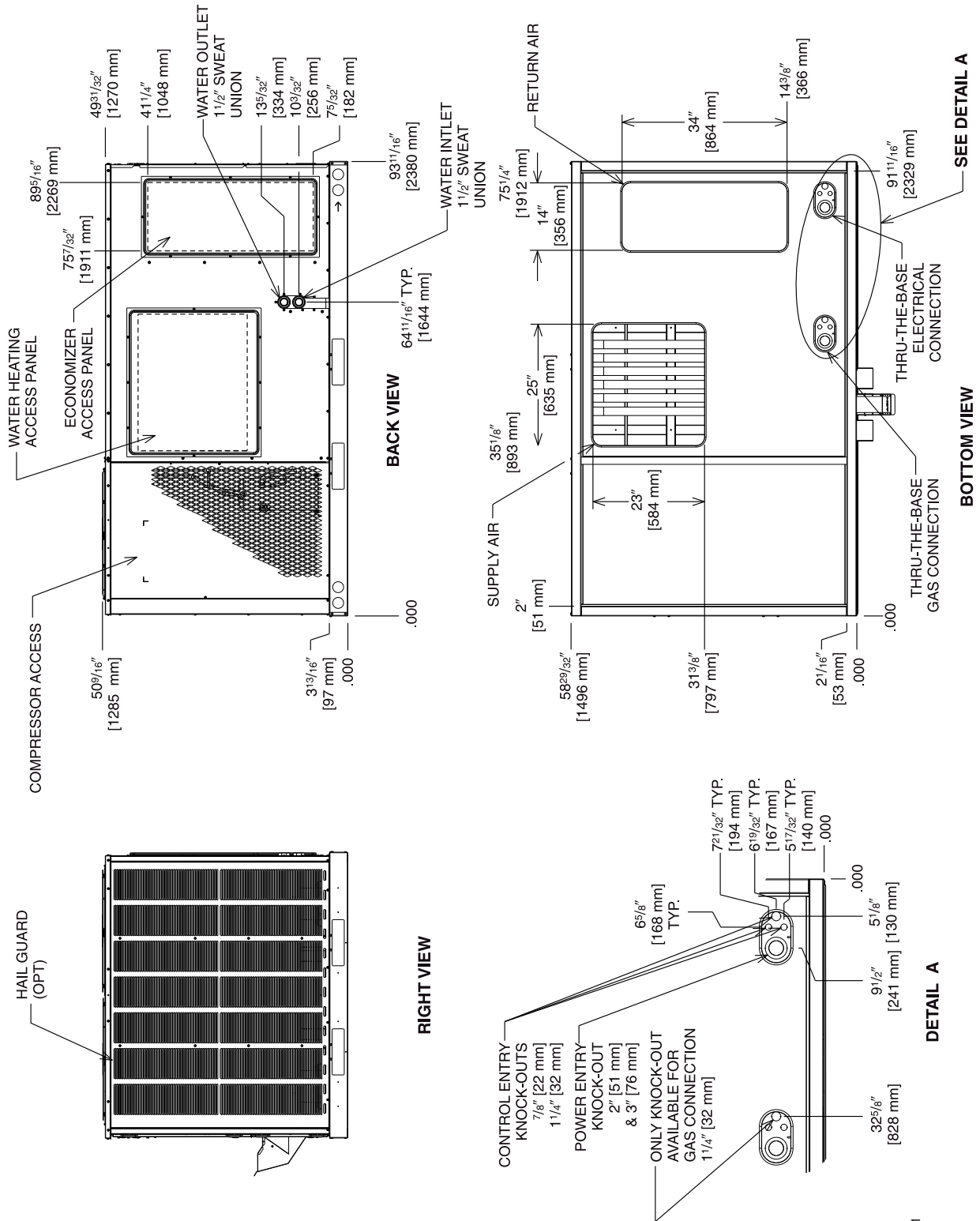


Illustration  
ST-A1190-20

[ ] Designates Metric Conversions

# GAS HEAT / ELECTRIC COOLING PACKAGE DOWNFLOW ONLY

## BOTTOM VIEW



[ ] Designates Metric Conversions

Illustration  
ST-A1190-21



## RKHL SERIES STANDARD FEATURES INCLUDE:

- R-410A HFC refrigerant
- Complete factory charged, wired and run tested
- Scroll compressors with internal line break overload and high-pressure protection
- RKHL-C120 has a single stage compressor.
- RKHL-D120 has dual independent compressors.
- Downflow only
- TXV refrigerant metering system
- High Pressure and Low Pressure/Loss of charge protection standard on all models
- Solid Core liquid line filter drier
- Single slab, single pass designed evaporator and condenser coils facilitate easy cleaning for maintained high efficiencies
- Cooling operation up to 125 degree F ambient
- Foil faced insulation encapsulated throughout entire unit minimizes airborne fibers from the air stream
- Hinged major access door with heavy-duty gasketing, 1/4 turn latches and door retainers
- Slide Out Indoor fan assembly for added service convenience
- Powder Paint Finish meets ASTM B117 steel coated on each side for maximum protection G90 galvanized
- One piece top cover and one piece base pan with drawn supply and return opening for superior water management
- Forkable base rails for easy handling and lifting
- Single point electrical and gas connections
- Internally sloped slide out condensate pan conforms to ASHRAE 62 standards
- High performance belt drive motor with variable pitch pulleys and quick adjust belt system
- Permanently lubricated evaporator, condenser and gas heat inducer motors
- Condenser motors are internally protected, totally enclosed with shaft down design
- 2 inch filter standard with slide out design
- Two stage gas valve, direct spark ignition, and induced draft for efficiency and reliability
- Tubular heat exchanger for long life and induced draft for efficiency and reliability
- Solid state furnace control with on board diagnostics
- 24 volt control system with resettable circuit breakers
- Colored and labeled wiring
- Copper tube/Aluminum Fin indoor coils with all aluminum MicroChannel condenser coil
- Molded compressor plug
- Factory Installed ClearControl™, a Direct Digital Control (DDC) and sensors which can connect to LonWorks™ or BACnet® BAS systems for remote monitoring and control
- Pressure sensors provide refrigerant pressures, superheat, and subcooling on the ClearControl™ display
- H<sub>2</sub>AC Package Unit featuring eSync Integration Technology includes water circulation pump, refrigerant-to-water heat exchanger, and eSync Integration Technology control board for heat recovery during air conditioning mode to preheat potable water.