



The new degree of comfort.®



Residential Gas
Professional *Classic Plus*
Maximus Water Heaters

Professional *Classic Plus*® Maximus Gas Water Heater offers maximum efficiency & continuous flow

Efficiency

- Up to .90 UEF reduces operating cost
- ENERGY STAR® rated

Performance

- Up to 95G first hour rating depending on model
- Recovery: Up to 64 GPH at a 90° F rise, depending on model

Easy Installation

- Built-in Condensate Neutralizer
- Certified for multiple termination configurations
- Easy front access to connections and components
- Zero clearance on sides and back
- Longest vent runs, installs as PV or PDV with same unit
- 8" Centers on top water connections for easy replacement of standard gas water heaters
- 1/2" NPT gas connection
- 3/4" NPT water inlet and outlet; 3/4" condensate drain connections
- Side water connections for space heating applications
- Temperature and pressure relief valve installed

Integration

- Easy to use LCD display with integrated diagnostics

High Altitude Compliant

- Certified to 10,100 ft. above sea level
– **High altitude dongle installation required for over 2000 feet**

Plus...

- Dual anode rods extend tank life
- Enhanced flow brass drain valve for faster draining
- Start-up Verification for better diagnostics, faster installation and easier servicing

Warranty

- 8-Year limited tank and parts warranty
See Residential Warranty Certificate for complete information

Units meet or exceed ANSI requirements and have been tested according to D.O.E. procedures. Units meet or exceed the energy efficiency requirements of NAECA, ASHRAE standard 90, ICC Code and all state energy efficiency performance criteria.



Professional *Classic Plus* Maximus

40 and 50-Gallon Capacities
50,000 BTU/h
Natural and LP Gas
Ultra Low NOx



LEED Points = 2



For more information, please visit
Rheem.com/maximus

See specifications chart on next page.

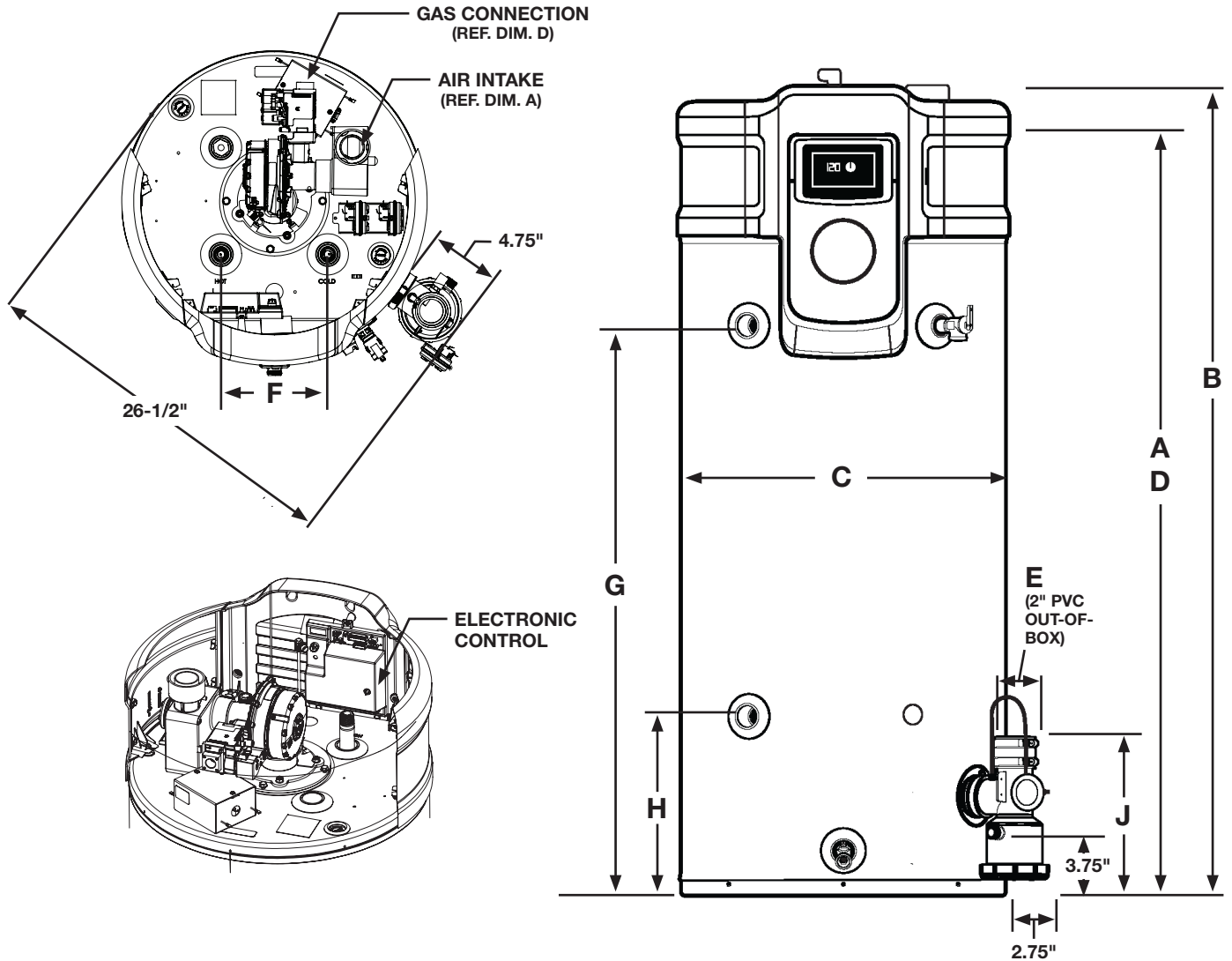


INTEGRATED HOME COMFORT

Professional *Classic Plus*[®] Maximus Specifications

| DESCRIPTION | | | | FEATURES | | | | | | ROUGHING IN DIMENSIONS (SHOWN IN INCHES) | | | | | | | | | | | ENERGY INFO. | |
|-------------|---------------------|-------------------|---------------------------|---------------------------|----|-------------------------------|----|----------------------------|----|--|-----------------------|---------|--------------------|---------------------------|----------------------|-----------------------|------------------------|------------------|------------------|----------------|-----------------------------|--|
| TYPE | NOMINAL GALLON CAP. | RATED GALLON CAP. | MODEL NUMBER | GAS INPUT IN THOUS. BTU/H | | RECOVERY IN G.P.H. 90° F RISE | | FIRST HR. RATING (GALLONS) | | HEIGHT TO INTAKE A | OVERALL UNIT HEIGHT B | DIAM. C | HT. TO GAS CONN. D | VENT SIZE E | WATER CONN. CENTER F | HT. TO SIDE TAP HOT G | HT. TO SIDE TAP COLD H | HT. TO EXHAUST J | WATER CONN. SIZE | SHIP WT. (LBS) | UNIFORM ENERGY FACTOR (UEF) | |
| | | | | NAT. | LP | NAT. | LP | NAT. | LP | | | | | | | | | | | | | |
| Short | 40 | 40 | PRO+G40-50U RH HE EC1 | 50 | - | 64 | - | 88 | - | 54-1/4 | 54-1/2 | 21-3/4 | 50-1/4 | 2", 3", 4", 2" or 3" Flex | 8 | 38 | 12 | 10 | 3/4 | 221 | 0.90 | |
| Short | 40 | 40 | PRO+G40-50P RH HE EC1 | - | 50 | - | 64 | - | 88 | 54-1/4 | 54-1/2 | 21-3/4 | 50-1/4 | 2", 3", 4", 2" or 3" Flex | 8 | 38 | 12 | 10 | 3/4 | 221 | 0.90 | |
| Short | 40 | 40 | PRO+G40-50P RH HE EC1 (H) | - | 50 | - | 64 | - | 88 | 54-1/4 | 54-1/2 | 21-3/4 | 50-1/4 | 2", 3", 4", 2" or 3" Flex | 8 | 38 | 12 | 10 | 3/4 | 221 | 0.90 | |
| Tall | 50 | 50 | PRO+G50-50U RH HE EC1 | 50 | - | 64 | - | 95 | - | 64-1/4 | 65-1/2 | 21-3/4 | 61 | 2", 3", 4", 2" or 3" Flex | 8 | 48 | 12 | 10 | 3/4 | 247 | 0.88 | |
| Tall | 50 | 50 | PRO+G50-50P RH HE EC1 | - | 50 | - | 64 | - | 95 | 64-1/4 | 65-1/2 | 21-3/4 | 61 | 2", 3", 4", 2" or 3" Flex | 8 | 48 | 12 | 10 | 3/4 | 247 | 0.88 | |
| Tall | 50 | 50 | PRO+G50-50P RH HE EC1 (H) | - | 50 | - | 64 | - | 95 | 64-1/4 | 65-1/2 | 21-3/4 | 61 | 2", 3", 4", 2" or 3" Flex | 8 | 48 | 12 | 10 | 3/4 | 247 | 0.88 | |

Uniform Energy Factor and rated gallon capacity based on Department of Energy (DOE) requirements.
 (H) denotes high altitude LP model required for 2000-7800 feet.



RESIDENTIAL EQUIVALENT VENT LENGTHS

| 40G-50K AND 50G-50K; POWER VENT CONFIGURATION; (RIGID PIPE) | | | | 40G-50K AND 50G-50K; POWER DIRECT VENT CONFIGURATION; (RIGID PIPE) | | | | TERMINATIONS |
|--|--------------------|---------------------------|---|--|---------|----------------------------|----------------|--|
| ELEVATION (FEET) | VENT SIZE (INCHES) | NAT MAX EQ. LENGTH (FEET) | LP MAX EQ. LENGTH (FEET)** | NAT MAX EQ. LENGTH (FEET) | | LP MAX EQ. LENGTH (FEET)** | | |
| | | | | INTAKE | EXHAUST | INTAKE | EXHAUST | |
| 0-2000 | 2" | 50' | 50' | 50' | 50' | 50' | 50' | 2" AND 3" 90° ELBOWS, 2", 3" AND 4" CONCENTRIC AND 2" AND 3" PANCAKE |
| | 3" | 140' | 140' | 140' | 140' | 140' | 140' | |
| | 4" | 140' | 140' | 140' | 140' | 140' | 140' | |
| 2000-5400 | 2" | 50' | 40' <small>(High Altitude Model Required)</small> | 50' | 50' | 40' | 40' | |
| | 3" | 140' | 110' <small>(High Altitude Model Required)</small> | 140' | 140' | 110' | 110' | |
| | 4" | 140' | 110' <small>(High Altitude Model Required)</small> | 140' | 140' | 110' | 110' | |
| 5400-7800 | 2" | 50' | 20' <small>(High Altitude Model Required)</small> | 50' | 50' | 10' | 20' | |
| | 3" | 140' | 110' <small>(High Altitude Model Required)</small> | 140' | 140' | 110' | 110' | |
| | 4" | 140' | 110' <small>(High Altitude Model Required)</small> | 140' | 140' | 110' | 110' | |
| 7800-10,100 | 2" | 50' | Not Applicable | 50' | 50' | Not Applicable | Not Applicable | |
| | 3" | 140' | Not Applicable | 140' | 140' | Not Applicable | Not Applicable | |
| | 4" | 140' | Not Applicable | 140' | 140' | Not Applicable | Not Applicable | |
| MINIMUM INTAKE AIR AND EXHAUST VENT: 10' EQUIVALENT LENGTH | | | | | | | | |
| NATURAL GAS MODELS CAN BE INSTALLED IN HIGH ALTITUDE LOCATIONS WITH INSTALLATION OF HIGH ALTITUDE DONGLE AS SHOWN IN HIGH ALTITUDE SECTION OF MANUAL. | | | | | | | | |
| **LP GAS MODELS HAVE UNIQUE HIGH ALTITUDE MODEL NUMBERS. THEY ARE FACTORY SET FOR HIGH ALTITUDE OPERATION. HIGH ALTITUDE MODELS HAVE A 'H' DESIGNATION AT THE END OF THE MODEL NUMBER. REFER TO RATING PLATE FOR MODEL NUMBER. | | | | | | | | |

Note: Vent pipe size should not be mixed for venting these water heater. Use same diameter pipe for all venting of the unit.

All power direct models can use 2" concentric venting only as listed in the above chart.

2" Concentric vent can only be used with 2" rigid piping.

DO NOT mismatch concentric vent terminations with different rigid piping as it may cause the heater to malfunction or cause a lock-out condition unless specifically mentioned.

3" Concentric vent may be used with 3" and 4" venting.

| FLEXIBLE POLYPROPYLENE PIPE (FT) | | | | |
|----------------------------------|--------|---------|--------|---------|
| PIPE SIZE (IN.) | 2" | | 3" | |
| | INTAKE | EXHAUST | INTAKE | EXHAUST |
| MAX PV | 0 | 30' | 0 | 30' |

| VENTING – ELBOW EQUIVALENT VENT LENGTH | | | | | |
|--|----------|------------|-------------|----------|------------|
| 90° | | | 45° | | |
| SHORT SWEEP | STANDARD | LONG SWEEP | SHORT SWEEP | STANDARD | LONG SWEEP |
| DO NOT USE | 7' | 5' | DO NOT USE | 4.5' | 2.5' |

• Each 45 degree elbow reduced the equivalent length by 2-1/2 ft.



The new degree of comfort®



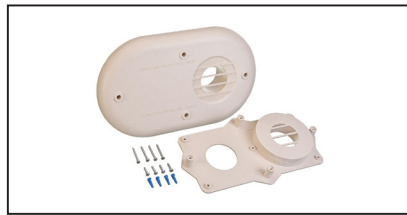
Residential Gas
Professional *Classic Plus*
Maximus Water Heaters

Altitude Guide by Model

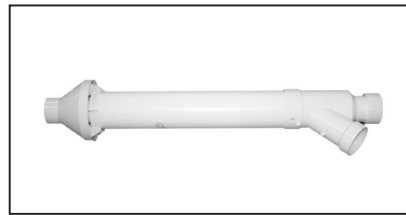
| MODEL | 0-2000 FEET | 2000-5400 FEET | 5400-7800 FEET | 7800-10,100 FEET |
|------------------|--------------------------------------|---|----------------|------------------|
| 40G / 50K BTU NG | No Changes Needed – Good Out The Box | Installation of High Altitude Dongle Required | | |
| 40G / 50K BTU LP | No Changes Needed – Good Out The Box | Factory Order Model with “-H” Designation – Installation of High Altitude Dongle Required | | N/A |
| 50G / 50K BTU NG | No Changes Needed – Good Out The Box | Installation of High Altitude Dongle Required | | |
| 50G / 50K BTU LP | No Changes Needed – Good Out The Box | Factory Order Model with “-H” Designation – Installation of High Altitude Dongle Required | | N/A |

Maximus Accessories

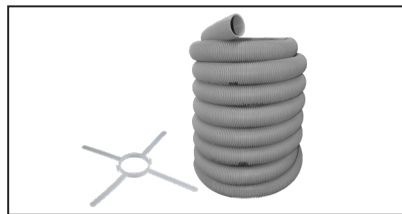
| PART NO. | DESCRIPTION |
|----------|--------------------------------------|
| SP20897 | 2" CONCENTRIC TERMINATION |
| SP20245 | 3" CONCENTRIC TERMINATION |
| SP20796 | 4" CONCENTRIC TERMINATION |
| SP20285 | 2" FLAT TERMINATION |
| SP20286 | 3" FLAT TERMINATION |
| SP21091 | 2" POLYPROPYLENE FLEX PIPE – 30 FEET |
| AP19356 | 3" POLYPROPYLENE FLEX PIPE – 30 FEET |
| SP21172 | AUTO SHUTOFF VALVE KIT |



Flat Vent Termination (SP20285, SP20286)



Concentric Vent Termination (SP20897, SP20245, SP20796)



Flex Venting Kit (SP21091, AP19356)

In keeping with its policy of continuous progress and product improvement, Rheem reserves the right to make changes without notice.

Rheem Water Heating • 1115 Northmeadow Parkway, Suite 100
Roswell, Georgia 30076 • www.rheem.com

Rheem Canada Ltd./Ltée • 125 Edgeware Road, Unit 1
Brampton, Ontario L6Y 0P5 • www.rheem.ca



INTEGRATED HOME COMFORT