



The new degree of comfort.®

Rheem® Professional Classic® RTEX Tankless Electric Water Heaters Provide On-Demand Hot Water at the Source

RTEX - 04T and RTEX - 06T are installed at the point-of-use. Ideal for use in a bathroom, office breakroom, wet bar, or an RV. The 120V RTEX - 04T 3.5 kW is suitable for one low flow faucet such as a small sink. The 240V RTEX - 06T 6.5 kW is suitable for one bathroom faucet or up to two low flow faucets running simultaneously. Both models include thermostatic temperature controls in 1-degree increments ranging from 80°F - 140°F and two optional 0.35 GPM aerators that thread onto the faucet to provide an even and consistent temperature and flow.

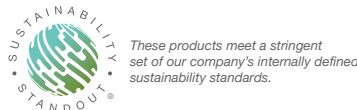
PERFORMANCE FEATURES

- **Saves Space** – Up to 98% smaller than a standard electric water heater
- **Saves Energy** – Zero standby heat loss when installed at the point-of-use
- **High Efficiency** – UEF up to .95 and advanced self-modulating technology only consumes the power needed to satisfy hot water demand
- Durable copper sheathed heating elements are replaceable, easy to maintain and improves service life
- Digital thermostatic temperature controls in 1-degree increments ranging from 80°F - 140°F (26°C - 60°C)
- Designed to be mounted in an upright position with the inlet and outlet water connections at the bottom of the unit for ease of installation
- Venting is not required to operate, simplifying the installation process compared to a gas tankless water heater
- Includes two optional 0.35 GPM aerators (flow restrictors) for optimal temperature output and performance



WARRANTY

- 5 Years - Leaks, 1 Year - Parts
- See Use and Care Manual for complete information.



Tankless Electric Specifications and Minimum Requirements

DESCRIPTION	FEATURES				DIMENSIONS (SHOWN IN INCHES)											
	MODEL NUMBER	POWER (kW)	VOLTAGE	TOTAL UNIT AMPERAGE (AMPS)	RECOMMENDED BREAKER SIZE	PHASE	UNIFORM ENERGY FACTOR (UEF)	REQUIRED WIRE (75°C INSULATION)	HEIGHT	WIDTH	DEPTH	WATER CONNECTIONS	SHIP WEIGHT (LBS.)	HEAT EXCHANGER	OPERATING PRESSURE	FLOW ACTIVATION RATE (GPM)
120V 1 HEATING CHAMBER																
RTEX - 04T	3.5	120	29	1 x 30 A Single Pole	1	0.95	10 AWG**	7	11	3	1/2" NPT	4	Stainless Steel	Minimum: 25 PSI Maximum: 150 PSI	0.25 GPM	
240V* 1 HEATING CHAMBER																
RTEX - 06T	6.5	240	27	1 x 30 A Double Pole	1	0.94	10 AWG**	7	11	3	1/2" NPT	4	Stainless Steel	Minimum: 25 PSI Maximum: 150 PSI	0.25 GPM	

* 240V units can be used on 208V single phase with 25% reduced temperature output. Please note per UL standards the rating plate and installation instructions will all be according to a 240V applied voltage. Check with local officials prior to derating the electrical infrastructure.

**AWG - American Wire Gauge





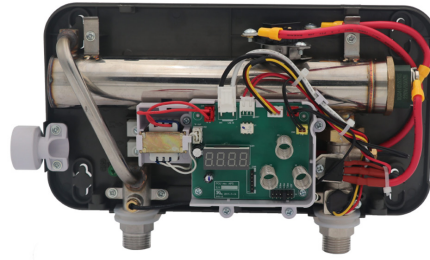
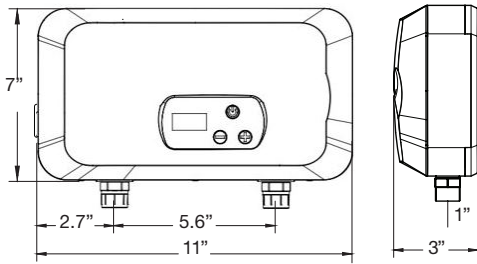
The new degree of comfort®



Residential Electric
Professional *Classic*
Tankless Water Heaters

Tankless Electric Water Heaters

RTEX - 04T & RTEX - 06T



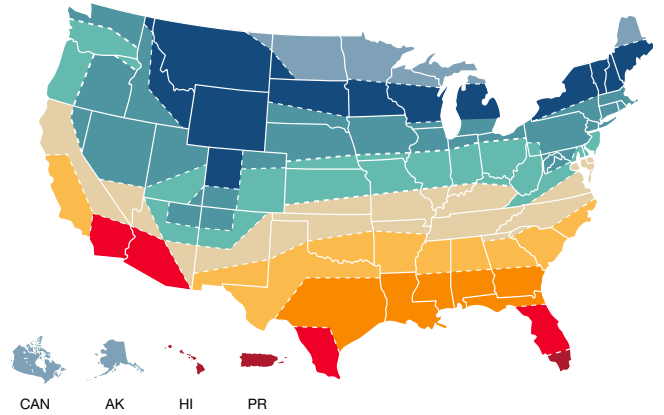
SIZING A TANKLESS ELECTRIC WATER HEATER

IMPORTANT – Verify that your home meets the electrical requirements. See specifications and minimum requirements. (front side)

- 1 Estimate your total household gallons per minute (GPM) needs by adding up the average flow rates by fixture (faucets), including any **that will run at the same time**.
Ex. 2 low flow faucets running at the same time adds up to 1 GPM (0.5 + 0.5 = 1 GPM)

- 2 Locate your zone on the map.

U.S. Average Ground Water Temperature Zone Map



Average Flow Rates (GPM) by Fixture

Low Flow Faucet	0.5
Bathroom Faucet	1
Kitchen Faucet	1.5*
Low Flow Shower	1.5*

*RTEX - 06T is only suitable in zone 9 (S. Florida, Hawaii, and Puerto Rico).

Flow rates may vary.

- 3 Select the model that can supply the estimated total household gallons her minute (Step 1) with the ground water temperature in your zone.

Flow Rate Capacity Table by Zone (Gallons Per Minute - GPM)

Model #	Zone 1 37°F/ 3°C	Zone 2 42°F/ 5°C	Zone 3 47°F/ 8°C	Zone 4 52°F/ 11°C	Zone 5 57°F/ 14°C	Zone 6 62°F/ 17°C	Zone 7 67°F/ 20°C	Zone 8 72°F/ 22°C	Zone 9 77°F/ 28°C
RTEX - 04T	Not Recommended				0.5	0.6	0.6	0.7	0.9
RTEX - 06T	0.7	0.7	0.8	0.8	0.9	1.0	1.2	1.3	1.6

Flow rates are calculated to a set point of 105°F. Ground water temperature varies seasonally.

In keeping with its policy of continuous progress and product improvement, Rheem reserves the right to make changes without notice.

Rheem.com | 800.374.8806
Manufacturers National Service Department
400 Captain Neville Drive, Waterbury, CT 06705



INTEGRATED HOME COMFORT