

RELY ON



# RUUD<sup>®</sup> HYBRID ELECTRIC HEAT PUMP WATER HEATER

SMART, ENERGY-EFFICIENT HOT WATER  
FOR BUSINESSES

**TESTED  
TOUGH**



**NEW! TOP CONNECTIONS &  
DUCT-READY DESIGN**



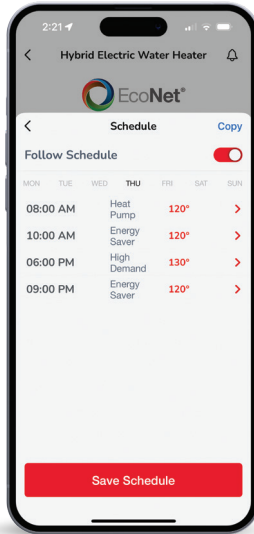
*This product meets a stringent  
set of our company's internally  
defined sustainability standards*

# Smart Control Powered by EcoNet® Technology

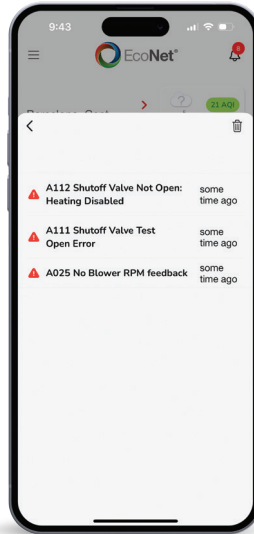


Built-in Wi-Fi gives business owners complete control of their water heater from a smart phone<sup>1</sup> and the EcoNet App—including:

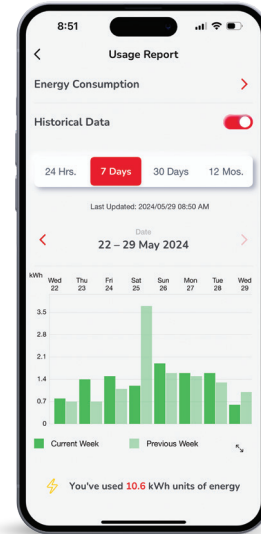
## SCHEDULING OPERATING MODE & SET POINT



## VIEWING / MANAGING ALERTS



## TRACKING ENERGY USAGE



## WHY CONNECTED WATER HEATERS?



### CONNECT TO ECONET® FOR INTEGRATED FEATURES, INCLUDING:

- Mobile alerts for notifications / maintenance reminders<sup>1</sup>
- Energy usage reports from the app
- Store contractor information in the app to request a service call at the push of a button



<sup>1</sup>Wi-Fi broadband Internet connection and EcoNet App required; Notifications are dependent on external factors beyond Ruud's control. Apple and the Apple logo are trademarks of Apple Inc., registered in the U.S. and other countries. App Store is a service mark of Apple Inc., registered in the U.S. and other countries.

Google Play and the Google Play logo are trademarks of Google LLC.



# Ruud® Light Duty Commercial Hybrid Electric Heat Pump



## HEAT PUMP TECHNOLOGY

The Light Duty Hybrid Electric HPWH pulls heat energy from the air around it to heat water, making it the most efficient water heater on the market<sup>2</sup> with up to a 4.07 UEF

## GET THE SMARTEST, MOST EFFICIENT ELECTRIC WATER HEATER IN ITS CLASS. AVAILABLE IN 40- 50-, 65- AND 80- GALLON MODELS

- Delivers more hot water per hour than most standard electric water heaters
- Eligible for available utility rebates
- High efficiency, up to 4.07 UEF
- Demand Response Ready for easy connection to utility programs
- 27 GPH recovery capacity

## EASY TO INSTALL & SERVICE

- Easily replaces a standard electric water heater
- Duct ready – inlet and exhaust
- Easy access to side connections and to electrical junction box
- ¾" NPT water inlet and outlet; ¾" condensate drain connections
- Easily accessible, top-mounted washable air filter
- Enhanced-flow brass drain valve

## BUILT-IN PROTECTION & INTELLIGENCE

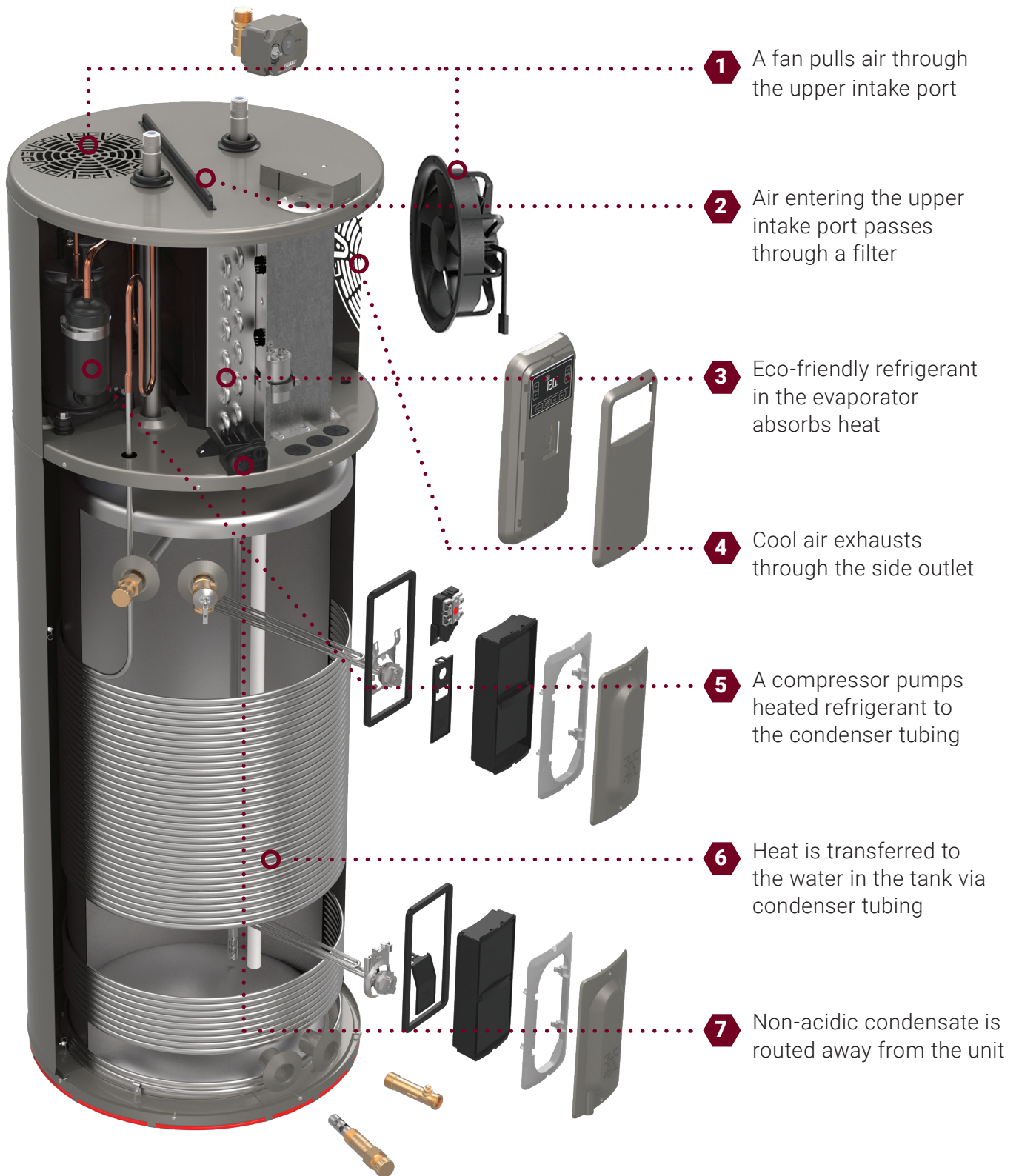
- Integrated Wi-Fi<sup>1</sup>
- LeakGuard™ and LeakSense™ accessory ready
- EcoNet® Smart Monitoring System, providing energy reports and system alerts to your mobile phone
- Various energy efficient operating modes
- Built-in EcoPort™ (CTA-2045 port)



NEW! TOP  
CONNECTIONS &  
DUCT-READY  
DESIGN

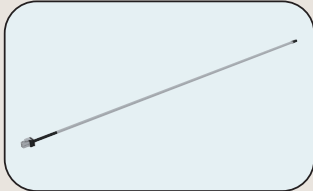
<sup>1</sup>Wi-Fi broadband Internet connection and EcoNet® App required; Notifications are dependent on external factors beyond Ruud's control.

# How it Works





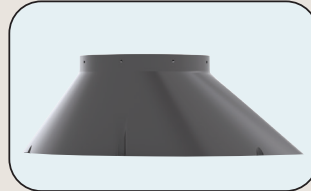
# Accessories



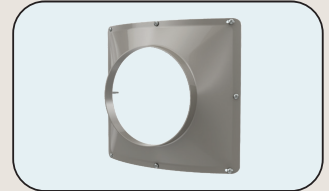
**Leak Sensor (AP19134)** – Automatic detection of internal and external leaks



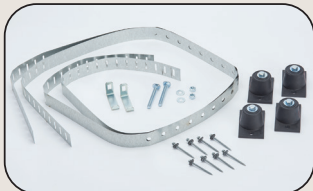
**Shut-off Valve (AP20180)** – Automatic shut off of water supply to unit



**Inlet Duct Adapter (SP21105)** – Allows for ducting to be connected on the top inlet



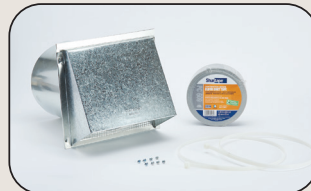
**Outlet Duct Adapter (SP17829)** – Allows for ducting to be connected to the unit



**Earthquake Isolation Kit (SP20882)** – Installations in seismic regions



**Vibration Isolation Kit (SP20883)** – Installation on non-concrete floors



**8" Diameter UL Certified Termination Kit (SP20883)** – Termination to the outside or to the attic with 8" diameter



**7" Diameter UL Certified Termination Kit (SP20885)** – Termination to the outside or to the attic with 7" diameter



**6" Diameter UL Certified Termination Kit (SP20886)** – Termination to the outside or to the attic with 6" diameter



**5" Diameter UL Certified Termination Kit (SP20887)** – Termination to the outside or to the attic with 5" diameter



**8" Ruud Approved Damper Kit (SP20888)** – Exhaust only to the outside ducting configuration (no inlet duct)

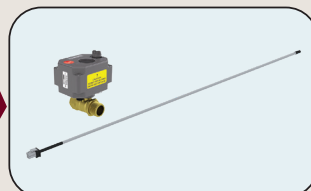


**25' Flexible 8" Diameter Duct Kit (SP20889)** – For up to 25' of ducting



**Rigid Elbow Duct Kit (SP20890)** – Installation in tight places where space needs to be minimized

**UPGRADE KIT** – Add leak detector and shutoff valve to protect from water damage



**Leak Sensor & Shut-off Valve Kit (SP21111)** – Upgrade to protect your customers businesses from water damage with leak detection and auto shutoff valve

# Financing & Support



## INCREASE SALES WITH CONVENIENT CREDIT OPTIONS

The Ruud® KwikComfort® Financing suite of programs is designed to do one thing: help you increase sales by making it even easier for your customers to get their new Ruud Water Heating system. It includes features and benefits that will appeal to you and your customers. Three different KwikComfort Financing programs are available:



### **Residential KwikComfort Financing—**

via Synchrony Bank—helps homeowners purchase Ruud equipment on a budget-friendly payment plan—which allows you to increase sales, sell larger projects, broaden your customer base and create repeat business. Plus, Ruud and Synchrony offer:

- Training for selling based on customer needs
- Instant online application and a convenient payment estimator tool
- Reporting tools to track applications and billing, making financing easy



### **Residential KwikComfort Second Look Financing—**

via Fortiva™ Retail Credit—lets you offer financing to credit-challenged homeowners turned down by a primary lender. So, more customers can purchase Ruud products—plus, pay for additional repairs, product upgrades and services, helping you:

- Increase sales opportunities
- Sell larger purchases and upgrades
- Attract customers and create repeat business



### **Commercial KwikComfort Financing—**

via Fernwood Capital™ & Leasing—provides financing options for business owners and national accounts, so you can:

- Increase sales with more affordable equipment
- Improve rate of repeat business
- Receive faster payment to your company
- Increase profits by selling monthly payments, not total cost





# Why Ruud Commercial?

## Application Consulting

Put the power of our portfolio to work for you. Ruud Commercial Water Heaters is your source for any commercial hot water need. If you need assistance with sizing or product selection our teams of application engineers are ready to assist you.



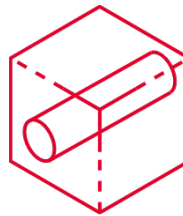
### Project Consulting

Collaborate with experts who will provide specialized solutions tailored to meet your needs.



### Equipment Selection

We develop and maintain product application sizing charts for all commercial products.



### Piping Diagrams

2D and 3D support with creation of project quotes showing relevant specifications.



### Sizing Reports

Product application sizing and design solutions within 48 hours.



Scan code and contact us now to get started.

RELY ON



DESCRIPTION					ENERGY INFO	FEATURES						SHIPPING WEIGHTS	
NOMINAL GALLON CAPACITY	RATED GALLON CAPACITY	MODEL NUMBER	MODEL VARIANT	ELECTRIC BREAKER SIZE	UNIFORM ENERGY FACTOR (UEF)	COMPRESSOR BTU/H	FIRST HR. RATING (GALLONS)	RECOVERY IN G.P.H 90° F RISE	ELEMENT WATTAGE	TOTAL UNIT WATTAGE	MAX AMPS	UNIT WT. (LBS.)	APPROX. SHIP WT. (LBS.)
40	36	HPLD40-2RU	703803	30	3.83	4,200	60	27	4,500	5,000	21	166	184
50	45	HPLD50-2RU	703804	30	3.88	4,200	67	27	4,500	5,000	21	185	203
65	59	HPLD65-2RU	703805	30	4.05	4,200	75	27	4,500	5,000	21	245	289
80	72	HPLD80-2RU	703806	30	4.07	4,200	87	27	4,500	5,000	21	261	306

Uniform Energy Factor and rated gallon capacity based on Department of Energy (DOE) requirements. All units have integrated Wi-Fi control board.

## CONTACT US

Customer Service, Warranty, Parts ..... 800.621.5622  
 Plumber Business Support.....866.339.2388  
 EcoNet® Technical Support .....800.255.2388  
 Technical Service..... 800.HEATER3  
 (800.432.8373)  
 Sizing & Selection Support –  
 Ruud Engineering .....commercial.application@Ruud.com

Visit us online at [Ruud.com/CommercialHPWH](http://Ruud.com/CommercialHPWH)



Download the Ruud App for product information, registration, parts and more!

In keeping with its policy of continuous progress and product improvement, Ruud reserves the right to make changes without notice.



Ruud Water Heaters  
 1115 Northmeadow Parkway, Suite 100  
 Roswell, Georgia 30076

[Ruud.com](http://Ruud.com)

Printed in USA 03/25 RU-CHPE-100