



Vantix™ Line Gas Furnaces



W802W DZ

80% A.F.U.E.†

Heating Stages: Two-Stage

Motor Type: Constant CFM

Input Rates Downflow: 50-125 kBTU [14.7-36.6 kW]

Configuration Options: Downflow



† A.F.U.E. (Annual Fuel Utilization Efficiency) calculated in accordance with Department of Energy test procedures.

Table of Contents

Features and Benefits3

Model Number Identification4

Physical Data and Specifications5

Dimensional Data6

Blower Performance Data7

Accessories8

Limited Warranty9

Features and Benefits

- **Diagnostics:** With the BluArch™ Contractor App & Bluetooth®¹ technology makes monitoring, troubleshooting and repairing the product easier than ever before
- **Dip Switch Free Installation Commissioning via Bluetooth® Technology:** Seamless final install step without DIP switch configuration using the BluArch™ Contractor App
- **Ignition System:** Proven Direct Spark Ignition (DSI) for reliability and longevity
- **Two-Stage Heating:** Furnace operation mainly stays at low capacity around 60-65%, but will switch to high capacity to deliver stable heat distribution
- **Constant CFM Motor:** Truly variable speed technology allows for ultimate humidity control, quieter sound levels and year-round energy savings

¹The Bluetooth® word mark and logos are registered trademarks owned by Bluetooth SIG, Inc. and any use of such marks by is under license. Other trademarks and trade names are those of their respective owners.

Gas Furnaces

<u>W</u>	<u>80</u>	<u>2</u>	<u>W</u>	<u>050</u>	<u>3</u>	<u>A</u>	<u>14</u>	<u>DZ</u>	<u>S</u>	<u>B</u>	<u>A</u>	<u>S</u>
Brand	Furnace Efficiency	Stages of Heating	Motor Type	Heating Input	AC Max. Capacity	Major Series	Width	Position	NOx	Controls	Minor Series	Option Code
W - WeatherKing	80 - 80% AFUE	2 - Two-Stage	W - Variable Speed	050 - 50K BTUH [14.7 kW] 075 - 75K BTUH [22.0 kW] 100 - 100K BTUH [29.3 kW] 125 - 125K BTUH [36.6 kW]	3 - 3 ton drive 4 - 4 ton drive 5 - 5 ton drive	A - 1st Design Series	14 - 14" Width 17 - 17.5" Width 21 - 21" Width 24 - 24.5" Width	DZ - Downflow Zero Clearance	S - Standard N - Low NOx	B - Communicating, Bluetooth®	A - 1st Series	S - Standard Grade

[] Designates Metric Conversions

AVAILABLE MODELS
W802W0503A14DZ*BAS
W802W0754A17DZ*BAS
W802W0755A21DZ*BAS
W802W1005A21DZ*BAS
W802W1255A24DZ*BAS

* S = Standard, N = Low NOx

STANDARD EQUIPMENT	
**Adjustable Humidifier On/Off Delay	Electronic On/Off Blower Time Control
**Auxiliary Input Connection	Fully Insulated Heat Exchanger Cabinet
**Condensate Switch Connection	Humidifier Connections
**Outdoor Air Temperature Sensor Connection	Humidistat Terminal Connection
**Supply Air Sensor Connection	Limit Controls
100% Safety Lock Out	Low Speed Continuous Fan Option
2 Stage Induced Draft Motor	Manual Shut-Off Valve
Adjustable Cool Fan Off Delay	On Demand Dehumidifier Connection
Adjustable Humidifier On/Off Delay (EcoNet®/App Only)	One Hour Automatic Retry
Aluminized Steel Heat Exchanger Design	Power and Self-Test Diagnostics
Blower Compartment Door Safety Switch	Pressure Switches
Bluetooth® Diagnostics	PWM Controlled Constant Torque Electrically Commutated Blower Motor
Bluetooth® Setup	Redundant 2 Stage Main Gas Control
Completely Assembled and Wired	Single Speed Option for Heating and Cooling Applications
Direct Drive Motor	Two Plus* Stage Cooling Thermostat Connection
Thermostat Connections	Two Speed Heating
Electronic Air Cleaner Connections	

NOTE: A thermostat is not included as standard equipment
*When Connected to Three Speed or Modulating AC/HP Product

WARNING

THIS FURNACE IS NOT APPROVED
OR RECOMMENDED
FOR USE IN MOBILE HOMES

Physical Data and Specifications – Downflow Models

MODEL NUMBERS	W802W 0503A14DZ*BAS	W802W 0754A17DZ*BAS	W802W 0755A21DZ*BAS	W802W 1005A21DZ*BAS	W802W 1255A24DZ*BAS
Input-BTU/Hr [kW]	50,000 [15]	75,000 [22]	75,000 [22]	100,000 [29]	125,000 [37]
Heating Capacity BTU/Hr [kW] ①	40,000 [12]	60,000 [18]	60,000 [18]	80,000 [23]	100,000 [29]
Low Input BTU/Hr	35,000 [10]	52,500 [15]	52,500 [15]	70,000 [21]	87,500 [26]
Low Heating Capacity BTU/Hr	28,000 [8]	42,000 [12]	42,000 [12]	56,000 [16]	70,000 [21]
Blower (D x W) [mm]	11 x 6 [279 x 152]	11 x 7 [279 x 178]	11 x 10 [279 x 254]	11 x 10 [279 x 254]	11 x 10 [279 x 254]
Motor H.P. [W] Type	1/2 [373] VS-CT(ECM)	3/4 [560] VS-CT(ECM)	1 [746] VS-CT(ECM)	1 [746] VS-CT(ECM)	1 [746] VS-CT(ECM)
Min. Circuit Ampacity	9	12	15	15	15
Min. Overload Protection Device	15	15	20	20	20
Max. Overload Protection Device	15	15	25	25	25
Motor Full Load Amps	6.1	9.6	12.4	12.4	12.4
High Heating CFM [L/s]	975 [460]	1175 [555]	1480 [698]	1710 [807]	1850 [873]
Low Heating CFM [L/s]	695 [328]	1000 [472]	1176 [555]	1310 [618]	1450 [684]
MAX Cooling CFM [L/s]	1240 [585]	1650 [779]	1980 [934]	1980 [934]	1980 [934]
MIN Cooling CFM [L/s]	300 [142]	500 [236]	500 [236]	500 [236]	500 [236]
Fan CFM [L/s]	600 [283]	800 [378]	1000 [472]	1000 [472]	1000 [472]
Max. E.S.P. (In. W.C.) [kPa]	1.0 [0.25]	1.0 [0.25]	1.0 [0.25]	1.0 [0.25]	1.0 [0.25]
Temperature Rise Range °F – High Input	25-55 [13.9-30.6]	35-65 [19.4-36.1]	25-55 [13.9-30.6]	30-60 [16.7-33.3]	35-65 [19.4-36.1]
Temperature Rise Range °F – Low Input	20-50 [11.1-27.8]	25-55 [13.9-30.6]	20-50 [11.1-27.8]	25-55 [13.9-30.6]	30-60 [16.7-33.3]
Approx. Shipping Weight (Lbs.) [kg]	108.5 [49]	120.5 [55]	128.5 [58]	140 [63]	151 [68]
AFUE ②	80.00%	80.00%	80.00%	80.00%	80.00%

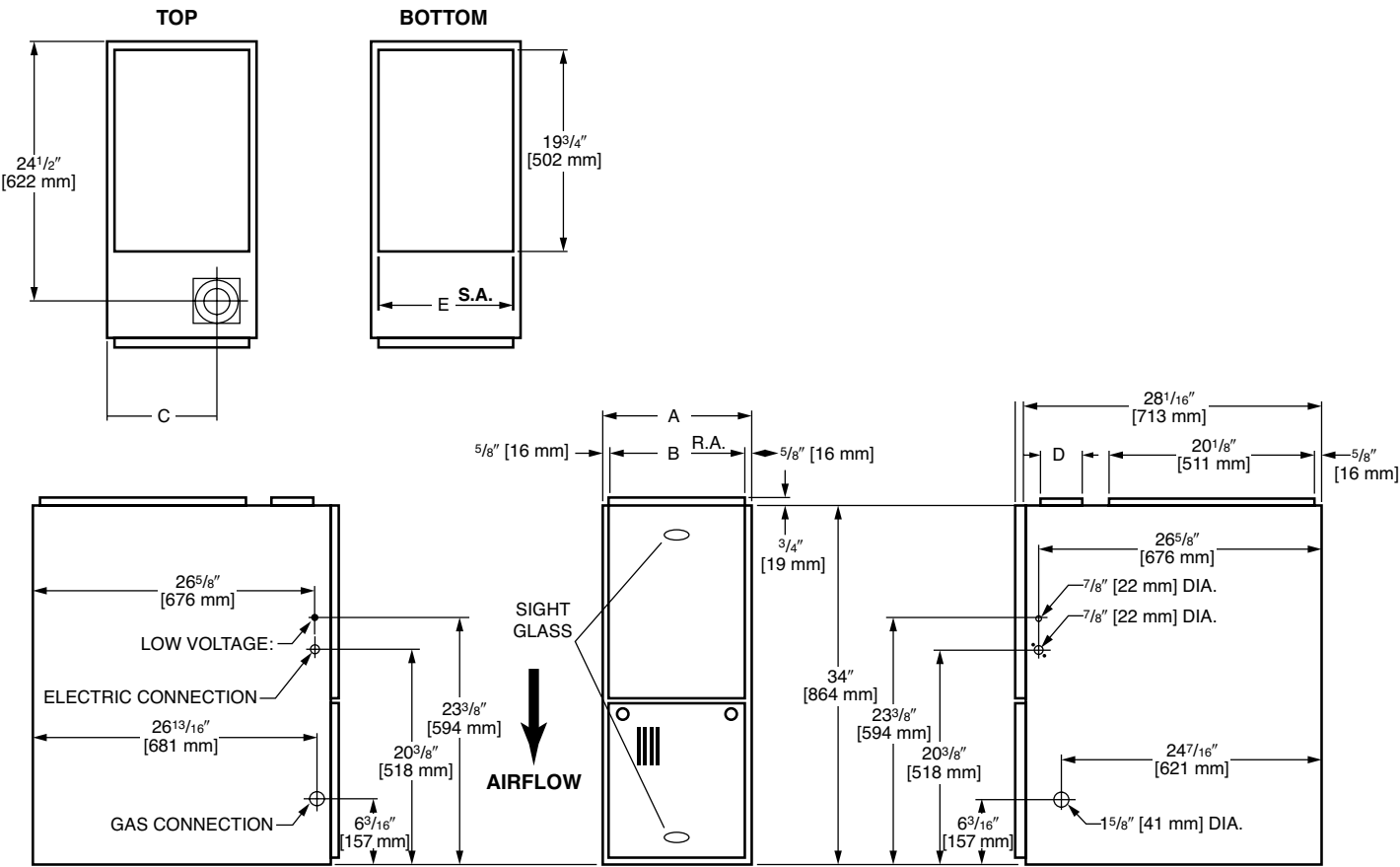
* S = Standard, N = Low NOx

This furnace does not meet air district requirements of 14 ng/J NOx emissions limit, and thus is subject to a mitigation fee of up to \$450.

This furnace is to be installed for propane firing only in air districts requiring 14 ng/J NOx emission limits. Operating in natural gas mode is in violation of these Rules.

[] Designates Metric Conversions

Downflow Application



Dimensional Data: Downflow Model

MODEL W802W-DZ	A	B	C	D	E	REDUCED CLEARANCE (IN.) [mm]					
						LEFT SIDE	RIGHT SIDE	BACK	TOP	FRONT	VENT
050	14 [356]	12 ²⁷ / ₃₂ [326]	10 ³ / ₈ [264]	①	13 ¹ / ₈ [333]	0	4 [102] ②	0	1 [25]	3 [76]	6 [152] ③
075417	17 1/2 [445]	16 ¹¹ / ₃₂ [415]	12 ¹ / ₈ [308]	①	16 ⁵ / ₈ [422]	0	3 [76] ②	0	1 [25]	3 [76]	6 [152] ③
075521	21 [533]	19 ²⁷ / ₃₂ [504]	13 ⁷ / ₈ [352]	①	20 ¹ / ₈ [511]	0	0	0	1 [25]	3 [76]	6 [152] ③
100	21 [533]	19 ²⁷ / ₃₂ [504]	13 ⁷ / ₈ [352]	①	20 ¹ / ₈ [511]	0	0	0	1 [25]	3 [76]	6 [152] ③
125	24 1/2 [622]	23 ¹¹ / ₃₂ [592]	15 ⁵ / ₈ [397]	①	23 ⁵ / ₈ [600]	0	0	0	1 [25]	3 [76]	6 [152] ③

NOTES: ① May require a 3" [76 mm] to 4" [102 mm] or 3" [76 mm] to 5" [127 mm] adapter.
② May be 0" [0 mm] with type B vent.
③ May be 1" [25 mm] with type B vent.
Furnaces must be vented in accordance with the National Fuel Gas Code, ANSI Z223.1 and in accordance with local codes.

[] Designates Metric Conversions

Blower Performance Data

	W802W 0503A14DZ*BAS	W802W 0754A17DZ*BAS	W802W 0755A21DZ*BAS	W802W 1005A21DZ*BAS	W802W 1255A24DZ*BAS
Factory Low Heating CFM [L/s]	695 [328]	1000 [472]	1176 [555]	1310 [618]	1450 [684]
Low Heat Approx. $\pm 7^{\circ}\text{F}$ CFM [L/s]	626 [295]	900 [425]	1059 [500]	1179 [556]	1305 [616]
Low Heat Approx. $\pm 12^{\circ}\text{F}$ CFM [L/s]	577 [272]	830 [392]	977 [461]	1088 [513]	1204 [568]
Factory High Heating CFM [L/s]	975 [460]	1175 [555]	1480 [698]	1710 [807]	1850 [873]
High Heat Approx. $\pm 7^{\circ}\text{F}$ CFM [L/s]	878 [414]	1058 [499]	1332 [629]	1539 [726]	1665 [786]
High Heat Approx. $\pm 12^{\circ}\text{F}$ CFM [L/s]	810 [382]	976 [461]	1229 [580]	1420 [670]	1536 [725]

[] Designates Metric Conversions

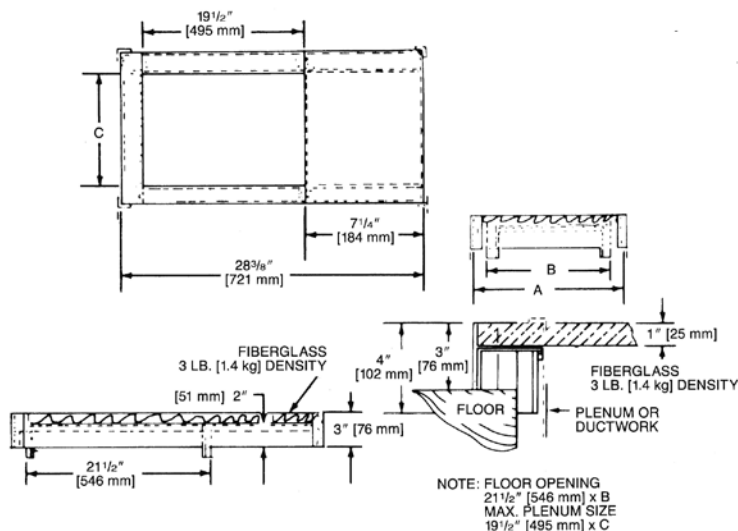
Downflow Accessories

DOWNFLOW WARNING: Unit design is certified for installation on non-combustible floor. A special factory supplied combustible floor sub-base is required when installing on a combustible floor. Failure to install the sub-base may result in fire, property damage and personal injury.

Combustible Floor Base Dimensions

COMBUSTIBLE FLOOR BASE	USE WITH FURNACE SIZES	A IN. [mm]	B IN. [mm]	C IN. [mm]
RXGC-B14	W802W050	14 ¹ / ₂ [368]	13 ¹ / ₄ [337]	11 ¹ / ₄ [286]
RXGC-B17	W802W075317	18 [457]	16 ³ / ₄ [425]	14 ³ / ₄ [451]
RXGC-B21	W802W100521, W801WT075521	21 ¹ / ₂ [546]	20 ¹ / ₄ [514]	18 ¹ / ₄ [464]
RXGC-B24	W802W125	25 [635]	23 ³ / ₄ [603]	21 ³ / ₄ [552]

[] Designates Metric Conversions



RXGF-CC*

FILTER RACK—Downflow top return mount. Requires (2) 14 x 20 Filters.

NOTE: Filter racks are shipped without filters.

*Filters available through PROSTOCK®.

For High Altitudes:

HIGH ALTITUDE OPTION CODE: U.S. & Canada – None required for high altitudes.

HIGH ALTITUDE CONVERSION KITS: U.S. & Canada – None required for high altitudes.

80+ HIGH ALTITUDE INSTRUCTIONS

Caution: Always follow National Fuel Gas Code (NFGC) guidelines when converting for high altitudes.

High altitude option codes are not required for these models. However, the burner orifice size needs to be recalculated and verified at elevations above 2000 ft. See Installation Instructions for more information.

NOTE: For Canadian installations only, an optional derate (manifold gas pressure reduction) method may be used to adjust the furnace for altitude. See Installation Instructions for more information. This optional method may **NOT** be used for U.S. installations.

L.P. CONVERSION KIT: RXGJ-FP15



GENERAL TERMS OF LIMITED WARRANTY*

WeatherKing will furnish a replacement for any part of this product which fails in normal use and service within the applicable period stated, in accordance with the terms of the limited warranty.

Conditional Parts (Registration Required)	Ten (10) Years
Heat Exchanger	Fifteen (15) Years

*For complete details of the Limited and Conditional Warranties, including applicable terms and conditions, contact your local contractor or the Manufacturer for a copy of the product warranty certificate.

Before proceeding with installation, refer to installation instructions packaged with each model, as well as complying with all Federal, State, Provincial, and Local codes, regulations, and practices.

© 2025 Rheem Manufacturing Company. WeatherKing trademarks owned by Rheem Manufacturing Company.

"In keeping with its policy of continuous progress and product improvement, WeatherKing reserves the right to make changes without notice."

5600 Old Greenwood Road
Fort Smith, Arkansas 72908 • www.weatherking.com