

A SMART CHOICE FOR COMFORT

RELY ON



ENDEAVOR

Maximize your space, comfort and savings with the Ruud® Endeavor® Line of Residential Packaged Gas Electric Units, Heat Pumps and Air Conditioners.



[Ruud.com/Endeavor](https://ruud.com/endeavor)

R E S I D E N T I A L P A C K A G E D M O D E L S G U I D E

OUTDOOR EQUIPMENT FOR INDOOR COMFORT



PEACE-OF-MIND PERFORMANCE

Relax, you're covered by some of the best warranties in the industry¹—up to 10 Year Conditional Parts in single-phase, residential applications².



REDUCED EMISSIONS

Households generate 72%³ of greenhouse gas emissions, so switching to a heat pump, can make a big difference for the environment—today. Plus, the packaged heat pumps, air conditioners and gas electric units all feature a MicroChannel refrigerant system with all-aluminum evaporator and condenser coils that fight corrosion and provide superior heat transfer capabilities for a more dependable performance—while using up to 58% less refrigerant than similar models.



HIGH COMFORT

Two-stage⁴ (67% and 100%) or single-stage⁵ technology work to continuously meet your ever-changing heating and cooling needs. You'll enjoy steady temperature and advanced humidity control that combine to exceed your optimal comfort expectations.



A SMART WAY TO LIVE BOTH **COMFORTABLY** AND **SUSTAINABLY**



AMONG PACKAGED GAS ELECTRIC UNITS, HEAT PUMPS AND AIR CONDITIONERS, **THESE ARE STARS**

The Ruud Endeavor Line RHPXYC Residential Packaged Heat Pump has earned our Sustainability Standout[®] seal, indicating it's among the best of the best. We created the seal to help you more easily find the products that save energy, save money and save the planet.

Earning ENERGY STAR[®] recognition means products meet strict energy efficiency guidelines set by the U.S. Environmental Protection Agency and *Achiever Plus*[®] Series Packaged Gas Electric Units, Heat Pumps and Air Conditioners are ENERGY STAR[®] certified, offering annual energy cost savings⁶.



WE THOUGHT OF EVERYTHING... & THEN SOME

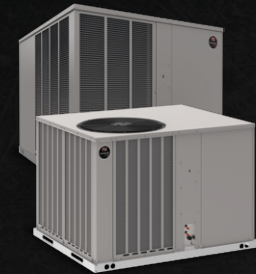
We evaluate every detail of a product from top to bottom, inside and out and every angle in between. That's 360+1. And that's why you can count on these residential packaged gas electric units, heat pumps and air conditioners to bring you and your family years of efficient and dependable indoor comfort.



TESTED. TRUSTED. TOUGH.

From the smallest part to complete comfort systems, we engineer quality into everything we make so we can be sure it's tough enough to deliver the ultimate performance you can count on day after day, year after year. That reliability is what makes Ruud different—and better.

Ruud[®] Endeavor[®] Line Residential Packaged Air Conditioners



Keep cool, even when the utility bill arrives, with the Ruud Endeavor Line of Residential Packaged Air Conditioners. Each model is designed to provide reliable comfort and savings.

	Achiever Plus [®]		Achiever [®]	
	RAC(A/X)YC	RACAYB	RACBYB	RACBYB
Cooling Efficiencies ⁷	15.2 SEER2 / 11.5 EER2 (1-phase & 3-phase)	13.4 SEER2 / 10.6 EER2 (1-phase & 3-phase)	13.4 SEER2 / 10.6 EER2 (1-phase only)	13.4 SEER2 / 10.6 EER2 (1-phase only)
Refrigerant Type	R-454B	R-454B	R-454B	R-454B
Nominal Sizes	2–5 tons (7.0–17.6 kW)	2–5 tons (7.0–17.6 kW)	2–5 tons (7.0–17.6 kW)	2–5 tons (7.0–17.6 kW)
Gross Cooling Capacity	24.2 to 59 kBTU	23.6 to 58.5 kBTU	24 to 60 kBTU	24 to 60 kBTU
Cabinet Type Designator	iR	iR	iR	iR
Sound Rating (as low as) ⁸	71 dBA	75 dBA	81 dBA	81 dBA
ENERGY STAR [®] Certified ⁴	Yes	No	No	No
Compressor Type	Two-stage Scroll	Single-stage Scroll (4- and 5-ton models feature two-stage)	Single-stage Scroll	Single-stage Scroll
Evaporator Coil Type	MicroChannel	MicroChannel	MicroChannel	MicroChannel
Condenser Coil Type	MicroChannel	MicroChannel	MicroChannel	MicroChannel
Airflow Type	Convertible	Convertible	Dedicated Horizontal	Dedicated Horizontal
Blower Motor Type	Constant Torque	Constant Torque	Constant Torque	Constant Torque
Fan Motor Type	PSC	PSC	PSC	PSC
Heater Kit	Field-installed option	Field-installed option	Field-installed option	Field-installed option
1-Phase Option	Yes (all tonnages)	Yes (all tonnages)	Yes (all tonnages)	Yes (all tonnages)
3-Phase Option	Yes (all tonnages)	Yes (not available on 2-ton models)	Yes (not available on 2-ton models)	Yes (not available on 2-ton models)
PlusOne [®] Features	Patented Refrigerant Detection System ⁹	Patented Refrigerant Detection System ⁹	Patented Refrigerant Detection System ⁹	Patented Refrigerant Detection System ⁹
Compatible Thermostat	Two-stage 24V	Two-stage 24V (4- and 5-ton) Single-stage 24V (2- to 3.5-ton models)	Single-stage 24V	Single-stage 24V
Limited Warranty ¹	Conditional Parts – 10 years (1-phase, residential applications) (registration required) Parts – 1 year (commercial applications) Compressor – 10 years (1-phase, residential applications), 5 years (1- and 3-phase, commercial applications)	Conditional Parts – 10 years (1-phase, residential applications) (registration required) Parts – 1 year (commercial applications) Compressor – 10 years (1-phase, residential applications), 5 years (1- and 3-phase, commercial applications)	Conditional Parts – 10 years (1-phase, residential applications) (registration required) Compressor – 10 years (1-phase, residential applications)	Conditional Parts – 10 years (1-phase, residential applications) (registration required) Compressor – 10 years (1-phase, residential applications)

Ruud[®] Endeavor[®] Line Residential Packaged Heat Pumps



Bring home year-round sustainable comfort with the Ruud Endeavor Line of Residential Packaged Heat Pumps. Each model is designed to provide efficient and consistent heating and cooling technology, all while contributing to reduced household emissions.

	Achiever Plus [®]		Achiever [®]	
	RHPXYC	RHP(A/X)YB	RHPBYB	RHPBYB
Cooling Efficiencies ⁷	15.2 SEER2 / 11.5 EER2 / 7.2 HSPF2 (1-phase & 3-phase)	13.4 SEER2 / 10.6 EER2 / 6.7 HSPF2 (1-phase & 3-phase)	13.4 SEER2 / 10.6 EER2 / 6.7 HSPF2 (1-phase only)	13.4 SEER2 / 10.6 EER2 / 6.7 HSPF2 (1-phase only)
Refrigerant Type	R-454B	R-454B	R-454B	R-454B
Nominal Sizes	3–5 tons (10.6–17.6 kW)	2–5 tons (7.03–17.6 kW)	2–5 tons (7.0–17.6 kW)	2–5 tons (7.0–17.6 kW)
Gross Cooling Capacity	24 to 60 kBTU	28.5 to 66.3 kBTU	27.6 to 67.2 kBTU	27.6 to 67.2 kBTU
Cabinet Type Designator	iR	iR	iR	iR
Sustainability Standout [®]	Yes	No	No	No
Sound Rating (as low as) ⁸	78 dBA	74 dBA	76 dBA	76 dBA
ENERGY STAR [®] Certified ⁴	Yes	No	No	No
Compressor Type	Two-stage Scroll	Single-stage Scroll (two-stage on 5-ton model)	Single-stage Scroll	Single-stage Scroll
Evaporator Coil Type	MicroChannel	MicroChannel	Tube-fin	Tube-fin
Condenser Coil Type	MicroChannel	MicroChannel	Tube-fin	Tube-fin
Airflow Type	Convertible	Convertible	Dedicated Horizontal	Dedicated Horizontal
Blower Motor Type	Constant Torque	Constant Torque	Constant Torque	Constant Torque
Fan Motor Type	PSC (2- to 4-ton) ECM (5-ton)	PSC	PSC	PSC
Heater Kit	Factory- or Field-installed Option	Factory- or Field-installed Option	Factory- or Field-installed Option	Factory- or Field-installed Option
1-Phase Option	Yes (all tonnages)	Yes (all tonnages)	Yes (all tonnages)	Yes (all tonnages)
3-Phase Option	Yes (all tonnages)	Yes (not available on 2-ton models)	Yes (not available on 2-ton models)	Yes (not available on 2-ton models)
PlusOne [®] Features	Patented Refrigerant Detection System ⁹	Patented Refrigerant Detection System ⁹	Patented Refrigerant Detection System ⁹	Patented Refrigerant Detection System ⁹
Compatible Thermostat	Two-stage 24V	Two-stage 24V (5-ton) Single-stage 24V (2- to 4-ton)	Two-stage 24V (5-ton) Single-stage 24V (2- to 4-ton)	Two-stage 24V (5-ton) Single-stage 24V (2- to 4-ton)
Limited Warranty ¹	Conditional Parts – 10 years (1-phase, residential applications) (registration required) Parts – 1 year (commercial applications) Compressor – 10 years (1-phase, residential applications), 5 years (1- and 3-phase, commercial applications)	Conditional Parts – 10 years (1-phase, residential applications) (registration required) Parts – 1 year (commercial applications) Compressor – 10 years (1-phase, residential applications), 5 years (1- and 3-phase, commercial applications)	Conditional Parts – 10 years (1-phase, residential applications) (registration required) Compressor – 10 years (1-phase, residential applications)	Conditional Parts – 10 years (1-phase, residential applications) (registration required) Compressor – 10 years (1-phase, residential applications)

Ruud[®] Endeavor[®] Line Residential Packaged Gas Electric



Year-round comfort has never been more convenient—or efficient—with the Ruud Endeavor Line of Residential Packaged Gas Electric Systems. Every model is designed with durability to perform season after season while delivering reliable savings.

	Achiever Plus [®]		Achiever [®]	
	RGE(A/X)YC	RGEAYB	RGEAYB	RGEAYB
Cooling Efficiencies ⁷	15.2 SEER2 / 11.5 EER2 (1-phase & 3-phase)	13.4 SEER2 / 10.6 EER2 (1-phase & 3-phase)	13.4 SEER2 / 10.6 EER2 (1-phase only)	13.4 SEER2 / 10.6 EER2 (1-phase only)
Heating Efficiency	81% AFUE ¹⁰	81% AFUE ¹⁰	81% AFUE ¹⁰	81% AFUE ¹⁰
Refrigerant Type	R-454B	R-454B	R-454B	R-454B
Nominal Sizes	2–5 tons (7.0–17.6 kW)	2–5 tons (7.0–17.6 kW)	2–5 tons (7.0–17.6 kW)	2–5 tons (7.0–17.6 kW)
Gross Cooling Capacity	24.2 to 59 kBTU	23.7 to 58.5 kBTU	24 to 60 kBTU	24 to 60 kBTU
Cabinet Type Designator	iR	iR	iR	iR
Bluetooth Connectivity ¹¹	Yes	No	No	No
Sound Rating (as low as) ⁸	71 dBA	75 dBA	75 dBA	75 dBA
EcoNet [®] Enabled	Yes	No	No	No
ENERGY STAR [®] Certified ⁴	Yes	No	No	No
Compressor Type	Two-stage Scroll	Single-stage Scroll (4- and 5-ton models feature two-stage)	Single-stage Scroll (4- and 5-ton models feature two-stage)	Single-stage Scroll (4- and 5-ton models feature two-stage)
Evaporator Coil Type	MicroChannel	MicroChannel	MicroChannel	MicroChannel
Condenser Coil Type	MicroChannel	MicroChannel	MicroChannel	MicroChannel
Airflow Type	Convertible	Convertible	Convertible	Convertible
Blower Motor Type	Constant CFM	Constant Torque	Constant Torque	Constant Torque
Fan Motor Type	PSC	PSC	PSC	PSC
Ultra Low NOx Option	No	Yes (all tonnages)	Yes (all tonnages)	Yes (all tonnages)
Low NOx Option	Yes (all tonnages)	Yes (all tonnages)	Yes (all tonnages)	Yes (all tonnages)
1-Phase Option	Yes (all tonnages)	Yes (all tonnages)	Yes (all tonnages)	Yes (all tonnages)
3-Phase Option	Yes (all tonnages)	Yes (not available on 2-ton models)	Yes (not available on 2-ton models)	Yes (not available on 2-ton models)
Stainless Steel Heat Exchanger	Yes (factory-installed option)	Yes (factory-installed option)	Yes (factory-installed option)	Yes (factory-installed option)
Compatible Thermostat	EcoNet Smart Thermostat, Two-stage 24V	Two-stage 24V (4- and 5-ton) Single-stage 24V (2- to 3.5-ton)	Two-stage 24V (4- and 5-ton) Single-stage 24V (2- to 3.5-ton)	Two-stage 24V (4- and 5-ton) Single-stage 24V (2- to 3.5-ton)
Heating Input	2-ton Model (1st Stage / 2nd Stage): 42 / 60 kBTU 3-ton Model (1st Stage / 2nd Stage): 42 / 60 to 70 / 100 kBTU 4- and 5-ton Models , (1st Stage / 2nd Stage): 56 / 80 to 70 / 100 kBTU	2- and 2.5-ton Models 40, 60 and 80 kBTU 3-ton Model 60, 80 and 100 kBTU 3.5- to 5-ton Models 80 and 100 kBTU	2- and 2.5-ton Models 32 to 65 kBTU 3-ton Model 48 to 81 kBTU 3.5- to 5-ton Models 65 to 81 kBTU	2- and 2.5-ton Models 32 to 65 kBTU 3-ton Model 48 to 81 kBTU 3.5- to 5-ton Models 65 to 81 kBTU
Heating Output	2-ton Model (1st Stage / 2nd Stage): 34 / 48.6 kBTU 3-ton Model (1st Stage / 2nd Stage): 34 / 48.6 to 56.7 / 81 kBTU 4- and 5-ton Models , (1st Stage / 2nd Stage): 45.3 / 64.8 to 56.7 / 81 kBTU	2- and 2.5-ton Models 32 to 65 kBTU 3-ton Model 48 to 81 kBTU 3.5- to 5-ton Models 65 to 81 kBTU	2- and 2.5-ton Models 32 to 65 kBTU 3-ton Model 48 to 81 kBTU 3.5- to 5-ton Models 65 to 81 kBTU	2- and 2.5-ton Models 32 to 65 kBTU 3-ton Model 48 to 81 kBTU 3.5- to 5-ton Models 65 to 81 kBTU
PlusOne [®] Features & More (PlusOnes indicated in bold)	Ruud Contractor and EcoNet Apps ¹² , built-in EcoNet and Bluetooth technology allow for easy install and diagnostics Proven Direct Spark Ignition (DSI) for reliability and longevity Patented Refrigerant Detection System⁹	Proven Direct Spark Ignition (DSI) for reliability and longevity Patented Refrigerant Detection System⁹	Proven Direct Spark Ignition (DSI) for reliability and longevity Patented Refrigerant Detection System⁹	Proven Direct Spark Ignition (DSI) for reliability and longevity Patented Refrigerant Detection System⁹
Limited Warranty ¹	Heat Exchanger – 10 years (factory standard), 20 years (stainless steel 1-phase models, commercial application), limited lifetime (1-phase, residential applications) (registration required) Conditional Parts – 10 years (1-phase, residential applications) (registration required) Parts – 1 year (commercial applications) Compressor – 10 years (1-phase, residential applications), 5 years (1- and 3-phase, commercial applications)	Heat Exchanger – 10 years (factory standard), 20 years (stainless steel 1-phase models, commercial application), limited lifetime (1-phase, residential applications) (registration required) Conditional Parts – 10 years (1-phase, residential applications) (registration required) Parts – 1 year (commercial applications) Compressor – 10 years (1-phase, residential applications), 5 years (1- and 3-phase, commercial applications)	Heat Exchanger – 10 years (factory standard), 20 years (stainless steel 1-phase models, commercial application), limited lifetime (1-phase, residential applications) (registration required) Conditional Parts – 10 years (1-phase, residential applications) (registration required) Parts – 1 year (commercial applications) Compressor – 10 years (1-phase, residential applications), 5 years (1- and 3-phase, commercial applications)	Heat Exchanger – 10 years (factory standard), 20 years (stainless steel 1-phase models, commercial application), limited lifetime (1-phase, residential applications) (registration required) Conditional Parts – 10 years (1-phase, residential applications) (registration required) Parts – 1 year (commercial applications) Compressor – 10 years (1-phase, residential applications), 5 years (1- and 3-phase, commercial applications)



SUPER SMART. SUPER EASY.

The Ruud Achiever Plus® Series RGE(A/X)YC Packaged Gas Electric Unit is EcoNet- and Bluetooth-enabled for simplified operation, installation and service.



It operates with the easy-to-use EcoNet Smart Thermostat, which optimizes system performance and provides a new level of protection and precision comfort **with features like:**

- Communication with latest sensor technology
- Control of your thermostat from anywhere via the EcoNet App¹²
- Alerts sent directly to your phone or email



Built-in Bluetooth® connectivity¹¹ makes it faster and easier for your contractor to install and service your new system. This can help lower your costs and help make your home comfortable again—fast.



DESIGNING FOR SUSTAINABILITY WITH LOW GWP

For 2025, the Environmental Protection Agency (EPA) has set a global warming potential (GWP) limit of 700 for refrigerant used in heating and cooling systems. This new requirement will result in a 78%¹³ lower GWP than previous-generation refrigerants—with only minimal changes to system installation. For us, this is another step toward our continued sustainability goal of reducing greenhouse gas emissions, while still delivering an exceptional level of energy efficient, dependable comfort.



Ruud.com

Innovating Since 1925

As the only brand bringing innovative air and water solutions to homes and businesses around the world, Ruud continues to deliver advanced comfort, savings and experiences to our customers—just as we've done since 1925.



Ruud USA
5600 Old Greenwood Road
Fort Smith, Arkansas 72908



Ruud Canada Ltd. / Ltée
125 Edgeware Road, Unit 1
Brampton, Ontario L6Y 0P5

Rheem Sales Company, Inc. manufactures the Ruud brand of residential heating & cooling products. In keeping with its policy of continuous progress and product improvement, Rheem reserves the right to make changes without notice.

¹Registration is required for the conditional parts warranty (if applicable). For complete details of the limited and conditional warranties, including applicable terms and conditions, contact your local Contractor or go to Ruud.com for a copy of the product warranty certificate. ²Refer to the chart for specific warranty terms by product. ³Residential Building Electrification in CA: Consumer economics, greenhouse gases and grid impacts, April 2019. ⁴Applies to the RHPXYC, RAC(A/X)YC and RGE(A/X)YC models. ⁵Applies to the RHP(A/X)YB, RHBYP, RAYCAYB, RACBYB and RGEAYB models. ⁶Proper sizing and installation of equipment is critical to achieve optimal performance. Ask your contractor for details or visit EnergyStar.gov. ⁷SEER2 (Seasonal Energy Efficiency Rating) / EER2 (Energy Efficiency Ratio) / HSPF2 (Heating Seasonal Performance Factor): The higher the SEER2 / EER2 / HSPF2 rating, the more efficient the unit. ⁸Based on Internal R&D Testing, 2024. Sound levels are also dependent on proper installation and location of product. ⁹Factory-installed on RAC(A/X)YC, RACBYB and RGE(A/X)YB—4 and 5 ton only; RACAYB and RGEAYB—3.5, 4 and 5 ton only; Factory-installed on all heat pump tonnages. ¹⁰AFUE (Annual Fuel Utilization Efficiency): The higher the AFUE, the more efficient the unit. ¹¹Bluetooth functionality applies to the heating section only. ¹²Wi-Fi broadband internet connection required. Download the EcoNet® App from the App Store® or Google Play® to set up your EcoNet Smart Thermostat. Receipt of notifications depend on home Wi-Fi setup. Amazon, Alexa and all related logos are trademarks of Amazon.com, Inc. or its affiliates. ¹³When comparing the GWP of R-454B to R-410A refrigerant.

The Bluetooth® word mark and logos are registered trademarks owned by Bluetooth SIG, Inc. and any use of such marks by Rheem® is under license. Other trademarks and trade names are those of their respective owners.

