

THE NEW RUUD® HYBRID ELECTRIC HEAT PUMP WATER HEATER



**FLEXIBLE INSTALL.  
FASTER SERVICE.  
EASY SELL.**

THE RUUD® HYBRID ELECTRIC  
HEAT PUMP WATER HEATER



*These products meet a stringent  
set of our company's internally defined  
sustainability standards.*



**PROFESSIONAL ULTRA™**  
**Hybrid Electric Heat Pump Water Heater**  
40-, 50-, 65- and 80-Gallon Capacities

RELY ON RUUD.™

## WHY **HYBRID**

# An Intelligent Replacement Solution

Flexible install, faster service and an easy sell, the new Ruud® Hybrid Electric Heat Pump Water Heater is the most efficient water heater available. It delivers impressive savings for homeowners—with potential energy saving and costs savings.<sup>1</sup> Plus, it's full of smart features your customers will love—from built-in Wi-Fi to our exclusive LeakGuard™ leak detection and prevention.<sup>3</sup>



**Duct-capable Air Outlet**

**Easy-to-use Controls**

**Easy-access  
Condensate Connection**

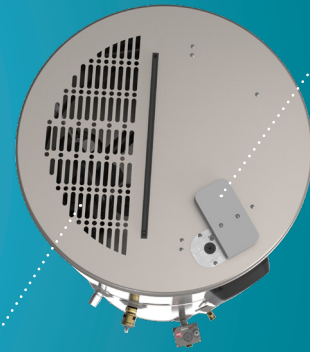
**Easy-service Design**

**LeakGuard™ Auto Water  
Shut-off Valve<sup>3</sup>**

**Long-lasting  
Brass Drain Valve**

**Built-in 360° Leak  
Detection Cable<sup>3</sup>**

**Demand Response Ready-  
EcoPort™ (CTA-2045 Port)**



**Duct-capable Air Inlet**

UP TO  
**4X**

THE EFFICIENCY  
of a standard  
electric water  
heater<sup>2</sup>

<sup>1</sup>Rebates vary by region. 2023 federal tax credit of 30% of the heat pump water heater and installation costs up to \$2000. <sup>2</sup>Based on estimated annual operating cost savings of the 40, 50, 65 and 80-gallon Hybrid Electric models compared to a standard electric water heater of like capacity with minimum efficiency. <sup>3</sup>Leak detection and prevention built-in for Ruud Hybrid with LeakGuard only.



PLUMBER FRIENDLY



# Hybrid Makes It **Flexible & Faster**

Feel confident selling Ruud Hybrid Electric HPWH to homeowners while also enjoying hassle-free installation, replacement and service. Build reliable, life-long relationships by giving your clients the peace-of-mind they deserve.



## PERFECT FOR REPLACEMENT

Easy replacement with the same dimensions as a standard electric water heater and one-button startup



## FITS MORE APPLICATIONS

With zero side clearance requirement, the new Hybrid Electric HPWH is a great option for homes with less space, even in closets



## BUILT-IN PREMIUM FEATURES

Save yourself time with built-in leak detection, automatic water shut-off valve and Wi-Fi control<sup>1,3</sup>



## BEST-IN-CLASS WARRANTY

Deliver peace-of-mind with 10-year limited tank and parts warranty<sup>2</sup>



## CONVENIENT DESIGN

All serviceable parts and condensate line are on the front of the unit, making service and earthquake strap installs easy



## ADVANCED DIAGNOSTICS

View detailed alerts and alarm codes while at the water heater via the on-unit display and Ruud® Contractor App to expedite service<sup>2</sup>

<sup>1</sup>Wi-Fi broadband connection and Ruud Contractor App required; connection between water heater and app dependent on external factors beyond Ruud's control. <sup>2</sup>See residential warranty certificate for complete information or view warranty details at [RheemWarranties.com](http://RheemWarranties.com). <sup>3</sup>Leak detection and prevention built in for Hybrid with LeakGuard only.

## Flexible Install, Faster Service, Easy Sell



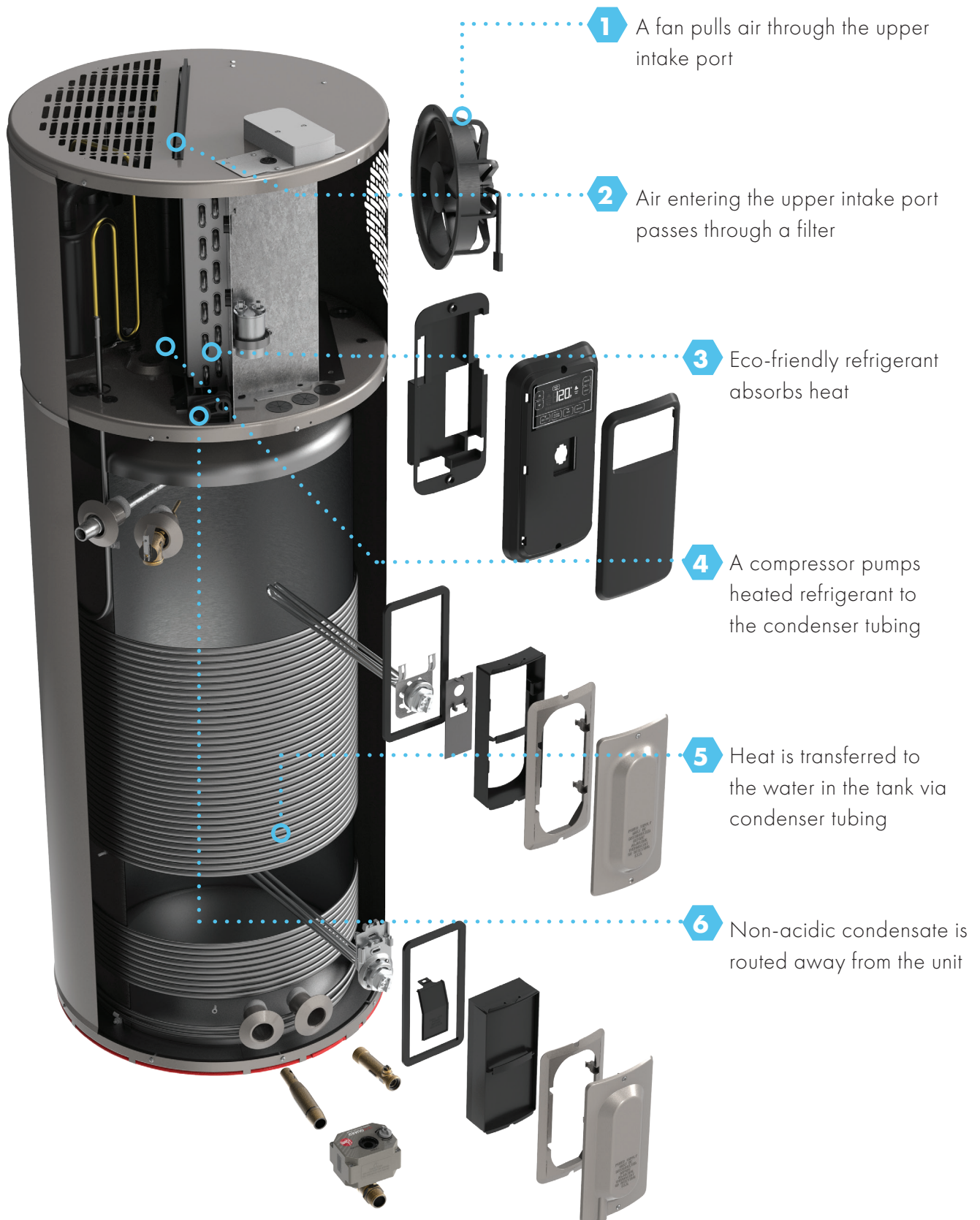
### VALVE QUICK-RELEASE

If the actuator communication goes bad between the control and valve, you can replace it without touching the plumbing for faster service



### LEAK SENSOR CHANNEL

Leak sensor replacement is easy by opening the bottom element cover and snaking the new leak sensor down the tube—360° protection, all from the front of the tank





# COST OF OWNERSHIP EXAMPLE

## 50 GAL HYBRID ELECTRIC HEAT PUMP WATER HEATER

**\$3,899** Initial Cost  
(install & haul away incl.)  
-\$1,000 Greener Homes Rebate  
  
+ \$1,397.70 10-Year operating cost @ \$139.77/yr  
**\$4,870** 10-Year Cost of Ownership

### ADVANTAGES

#### 10-Year Warranty

- + High Efficiency ENERGY STAR® Rated
- + Qualifies for Utility Rebates in most provinces
- + Cooler, dehumidified air from exhaust discharge
- + Leak Detection & Auto Shutoff Options
- + Sustainable (Consumes 75% Less Energy than a standard electric water heater)

## 50 GAL STANDARD 6-YR ELECTRIC WATER HEATER

**\$1,695** Initial Cost  
(install & haul away incl.)  
- \$0 No Rebate  
  
+\$4,880.95 10-Year operating cost @ \$488.05/yr  
**\$6,575.50** 10-Year Cost of Ownership

### ADVANTAGES

#### 6-Year Warranty

- + Lower initial cost

## 50 GAL STANDARD 6-YR GAS WATER HEATER

**\$2,699** Initial Cost  
(install & haul away incl.)  
-\$0 No Rebate  
  
+\$3,933.30 10-Year operating cost @ \$320/yr  
**\$6,632.30** 10-Year Cost of Ownership

### ADVANTAGES

#### 6-Year Warranty

- + Lower initial cost

Disclaimer: Cost of ownership is based on retail purchase and ownership pricing for the city of Barrie Ontario. Electric and Gas Rates were calculated in November 2023, and are subject to change.

# ENERGY RATES BY PROVINCE

(As of November 2023)

Province	Avg. kW/h Rate	Hybrid Model: PROP50 T2 RU375-30	6-Year Electric Model: PROE50 M2 RU95	Avg. Cubic Metres (m3)	6-Year NAT Gas Model: PROG50-38N RU60
		<b>837</b> kW/h per Year	<b>3492</b> kW/h per Year		<b>264</b> Therms per Year
Alberta	0.258	\$215.95	\$900.94	132	\$140
British Columbia	0.114	\$95.42	\$398.09	288	\$306.04
Manitoba	0.102	\$85.37	\$356.18	152	\$161.56
New Brunswick	0.139	\$116.34	\$485.39	525	\$555.80
Newfoundland and Labrador	0.148	\$123.88	\$516.82	N/A	N/A
Northwest Territories	0.41	\$343.17	\$1,431.72	N/A	N/A
Nova Scotia	0.183	\$153.17	\$639.04	689	\$730.80
Nunavut	0.354	\$296.30	\$1,236.17	N/A	N/A
Ontario	0.141	\$118.02	\$492.37	385	\$408.52
Prince Edward Island	0.184	\$154.01	\$642.53	N/A	N/A
Quebec	0.078	\$65.29	\$272.38	146	\$155.40
Saskatchewan	0.199	\$166.56	\$694.91	161	\$170.80
Yukon	0.187	\$156.52	\$653.00	N/A	N/A

Disclaimer: Price savings listed in this document should only be used as a guideline and may differ dependent on usage energy, gas and equipment usage. Rheem does not take responsibility for any pricing changes. This document was compiled in November 2023, and outlined energy and gas rates are reflective of this time period and are subject to change. Avg. kW/h Rate data was collected from energyhub.org in

November 2023, and energy rates are subject to change. Average Therm Rate data was collected from the following sources: <https://store.atco.com/>, <https://www.fortisbc.com/accounts-billing/billing-rates/natural-gas-rates/residential-rates>, [https://www.hydro.mb.ca/accounts\\_and\\_services/rates/residential\\_rates/](https://www.hydro.mb.ca/accounts_and_services/rates/residential_rates/), <https://naturalgasnb.com/en/for-home/accounts-billing/gas-price-update/>, <https://eastwardenergy.com/for-home/rates/>, <https://www.oeb.ca/consumer-information-and-protection/natural-gas-rates>, <https://energir.com/en/major-industries/natural-gas-price/price-and-evolution>, <https://www.saskenergy.com/manage-account/rates/residential-rates>. Note: The Therm rates were collected in November 2023, and are subject to change.



## Did you know?

The Ruud® Hybrid Electric Heat Pump Water Heater uses less energy to operate than a classic 100 Watt incandescent light bulb<sup>1</sup>



## Sustainability that **works**

Homeowners don't have to choose between sustainability goals and enjoying hot water

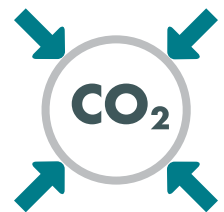


### HEAT PUMP TECHNOLOGY

The Ruud Hybrid Electric HPWH pulls heat energy from the air around it to heat water, making it the most efficient water heater on the market<sup>2</sup> with up to a 4.07 UEF

### CARBON FOOTPRINT REDUCTION

The Ruud Hybrid Electric HPWH uses 75% less energy<sup>3</sup> than a standard electric water heater to help minimize your impact on the environment



### LEAKGUARD™ AUTO WATER SHUT-OFF VALVE

The all-inclusive leak prevention system that limits leaks to no more than 20 oz. of water<sup>4</sup> to protect homes from damage



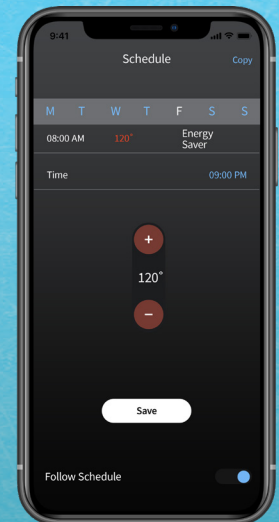
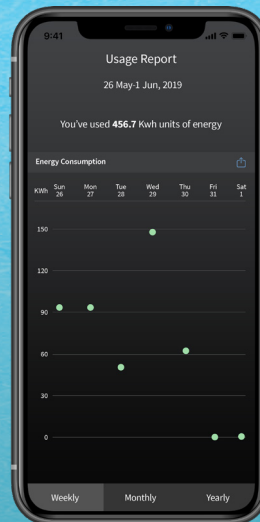
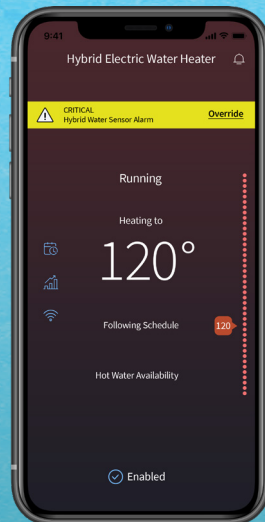
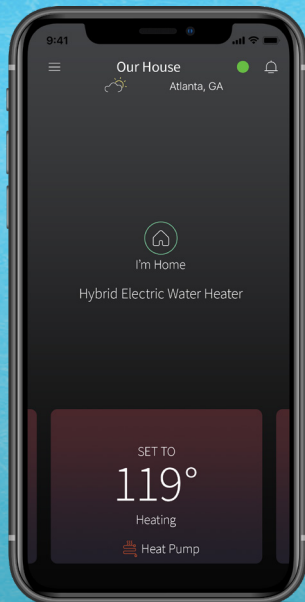
<sup>1</sup>Based on comparison of the annual operating cost of a 40- and 50- gallon hybrid model and a single 100 watt incandescent light bulb with an annual operating cost of \$132. <sup>2</sup>Based on review of available residential water heaters. <sup>3</sup>Based on comparison of 50-gallon Ruud® Hybrid and standard electric tank with minimum efficiency.

<sup>4</sup>Source: Rheem leak-sensing data; testing under a vacuum lock using 50 gallon tank, no expansion tank, average tank pressure of 40 psi, assuming no additional faucets are opened.





# The smartest water heater on the market



## BUILT-IN ECONET® WI-FI TECHNOLOGY

Homeowner can adjust water temperature, track energy usage and set vacation mode—all from a mobile device<sup>1</sup>

NOTE: EcoNet App subject to change without notice.

## LEAKSENSE™ LEAK DETECTION

Alerts the homeowner about a leak with built-in leak detection system that detects any leak—large or small, internal or external—in as little as 15 seconds<sup>2</sup>

## ENERGY USAGE TRACKING

Homeowners can view weekly, monthly and yearly energy usage reports from their phone to help you better manage energy consumption

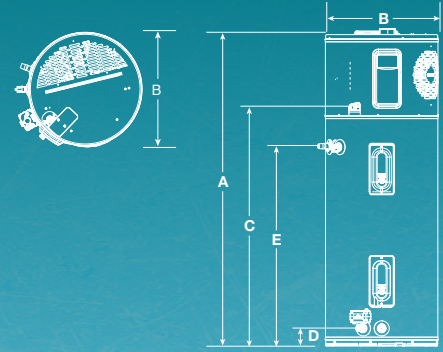
## OPERATING MODES AND SCHEDULING

Schedule set point adjustments and choose from five operation modes from the EcoNet App: Energy Saver, Heat Pump, Electric, High Demand, Vacation

<sup>1</sup>Wi-Fi broadband connection and EcoNet App required; notifications are dependent on external factors beyond Ruud's control. EcoNet is a registered trademark of Rheem® Manufacturing company. <sup>2</sup>Water leaks from the heater only, as tested across scenarios including a minimum of 5.5mL/min volume leak rate, using most common installation scenarios. Applies to Hybrid with LeakGuard. Source: Rheem Leak-Sensing Data; Time starts when leak begins and ends when sensor alarm is triggered. <sup>3</sup>Applies to Hybrid with LeakGuard models only. Source: Rheem leak-sensing data; testing under a vacuum lock using 50 gallon tank, no expansion tank, average tank pressure of 40 psi, assuming no additional faucets are opened.



# HYBRID ELECTRIC SPECIFICATIONS



DESCRIPTION				ENERGY INFO	FEATURES				TANK DIMENSIONS					
NORMAL GALLON CAPACITY	RATED GALLON CAPACITY	MODEL NUMBER	ELECTRIC BREAKER SIZE	UNIFORM ENERGY FACTOR (UEF)	ELEMENT WATTAGE	COMPRESSOR BTU	FIRST HOUR RATING (GALLONS)	RECOVERY IN G.P.H. 90° F RISE	HEIGHT (A)	DIAMETER (B)	HEIGHT TO CONDENSATE CONNECTION (C)	HEIGHT TO COLD INLET & DRAIN (D)	HEIGHT TO HOT OUTLET AND T&P (E)	APPROX. SHIP WT. (LBS)
<b>Hybrid Electric HPWH with LeakGuard™ - 30 AMPS</b>														
40	36	PROUH40 T2 RU375-S0	30	3.83	4,500	4200	60	26	62-5/16"	20-1/4"	47"	3-5/8"	39-5/8"	174
50	45	PROUH50 T2 RU375-S0	30	3.88	4,500	4200	67	27	61-3/4"	22-1/4"	47"	3-5/8"	39-5/8"	218
65	59	PROUH65 T2 RU375-S0	30	4.05	4,500	4200	75	27	64-3/16"	24-1/4"	49"	3-7/8"	42-3/8"	262
80	72	PROUH80 T2 RU375-S0	30	4.07	4,500	4200	87	27	74-3/16"	24-1/4"	59"	3-7/8"	52-3/8"	281
<b>Hybrid Electric HPWH - 30 AMPS</b>														
40	36	PROUH40 T2 RU375-30	30	3.83	4,500	4200	60	27	62-5/16"	20-1/4"	47"	3-5/8"	39-5/8"	174
50	45	PROUH50 T2 RU375-30	30	3.88	4,500	4200	67	27	61-3/4"	22-1/4"	47"	3-5/8"	39-5/8"	218
65	59	PROUH65 T2 RU375-30	30	4.05	4,500	4200	75	27	64-3/16"	24-1/4"	49"	3-7/8"	42-3/8"	262
80	72	PROUH80 T2 RU375-30	30	4.07	4,500	4200	87	27	74-3/16"	24-1/4"	59"	3-7/8"	52-3/8"	281
<b>Hybrid Electric HPWH - 15 AMPS</b>														
40	36	PROUH40 T2 RU375-15	15	3.45	2,250	4200	46	16	62-5/16"	20-1/4"	47"	3-5/8"	39-5/8"	174
50	45	PROUH50 T2 RU375-15	15	3.75	2,250	4200	54	16	61-3/4"	22-1/4"	47"	3-5/8"	39-5/8"	218
65	59	PROUH65 T2 RU375-15	15	3.55	2,250	4200	54	16	64-3/16"	24-1/4"	49"	3-7/8"	42-3/8"	262
80	72	PROUH80 T2 RU375-15	15	3.70	2,250	4200	67	16	74-3/16"	24-1/4"	59"	3-7/8"	52-3/8"	281



## Contact Us

### Customer Service, Warranty, Parts

800.621.5622

### Plumbing Support Team

866.339.2388

### EcoNet® Technical Support

800.255.2388

### Technical Service

800.HEATER3 (800.432.8373)

### Technical Service for Hybrid Water Heaters

800.995.0982

Visit us online at  
**Ruud-canada.ca**  
 or see your local distributor.

*In keeping with its policy of continuous progress & program improvement, Ruud reserves the right to make changes without notice.*