



Rheem® Commercial Tankless System – Free Standing

This custom-built tankless solution arrives on the jobsite factory-assembled with single point connections, including:

- RTGH-CS11i Condensing Tankless Water Heaters
- Includes pre-installed communication wires factory programmed manifold settings
- Pre-sized water and gas manifold
- Electrical wiring
- Condensate lines
- Fits, fully assembled, through standard 32-inch doorways and on elevators

System Options

- 2-6 tankless units per system

Engineered Solution by Rheem

- Scalable from 11,000 BTU/h to 1,199,400 BTU/h per system (6 units max per system rack, multiple racks can be linked up to 32 total units or 6,396,800 BTU/h)
- Multiple configurations
- Options for future expansion

Installation Savings

- Reduce installation costs with single point connections

Industry Best Solutions

- Minimum side to side clearances = 1/2 inch (to combustibles)
- Minimum flow rate = 0.26 GPM
- Minimum activation rate = 0.40 GPM
- UL-1738 & ULC-S636 certification on PPs venting accessories

Redundancy

- Modular system allows Isolation to reduce downtime

Warranty

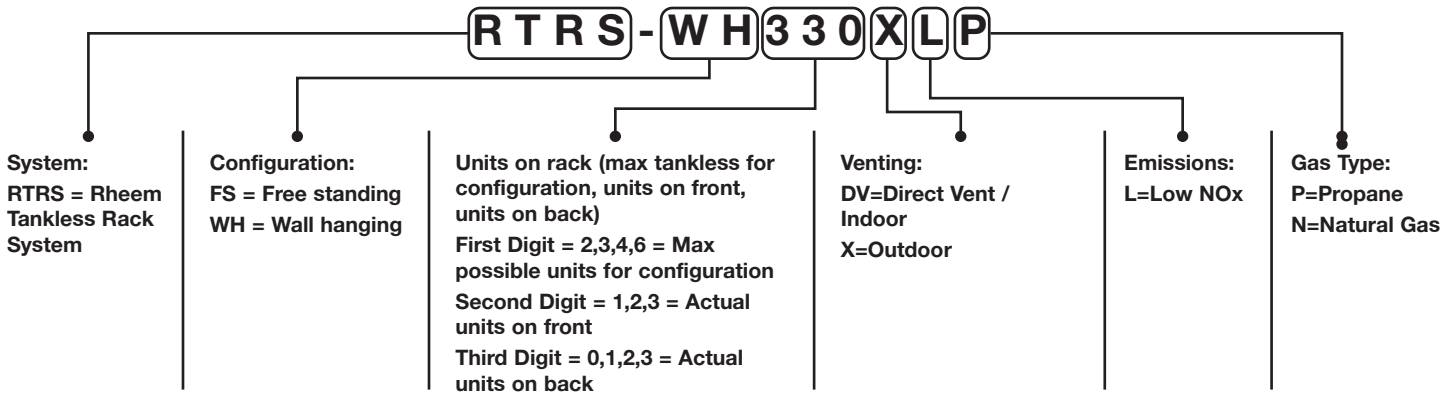
- 8-Year heat exchanger, 5-years parts, 1-year rack parts and 1-year labor*

*See Commercial Warranty Certificate for complete information



RTRS PART NUMBERS AND LAYOUTS

Commercial Tankless System Model Numbers Explained



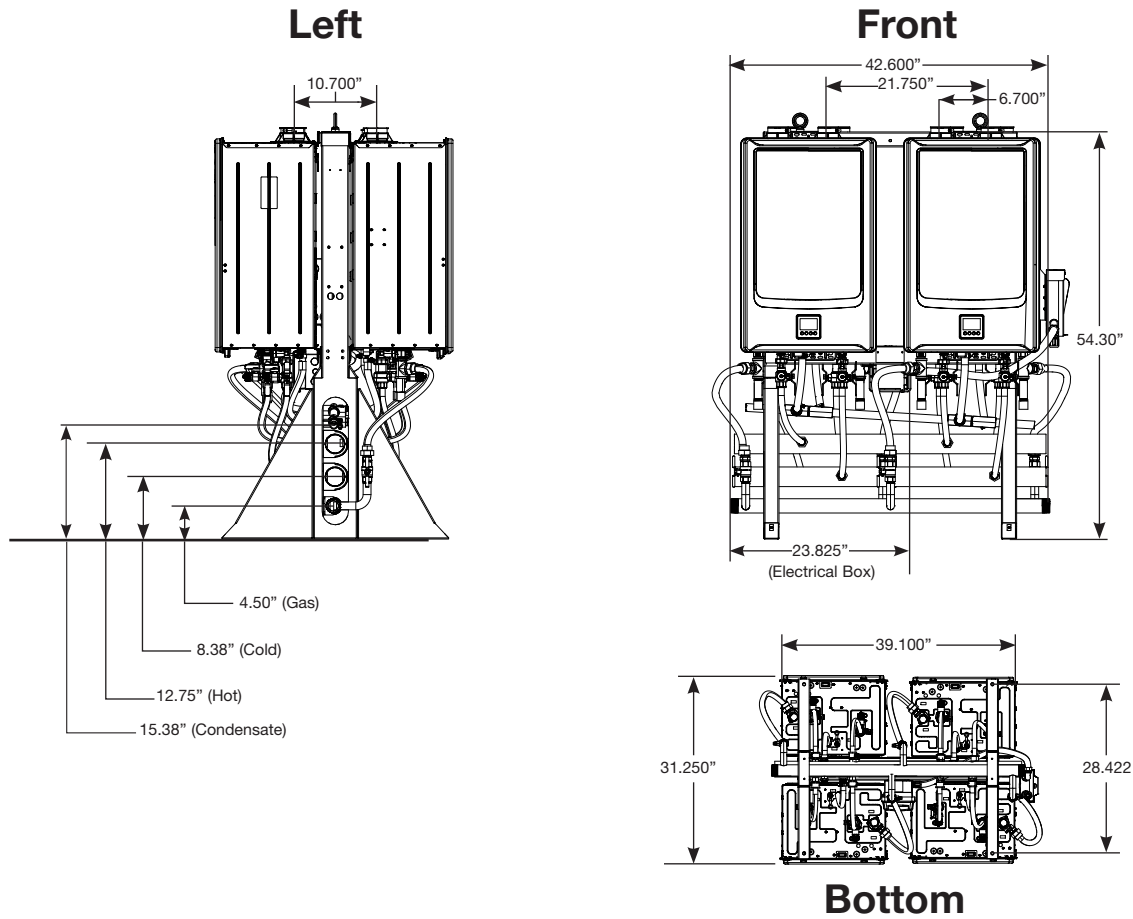
Free Standing Tankless Rack System

Mounts to ground only, must be on the ground, can be any distance from the wall.

PART NO.*	RACK TYPE	CONFIGURATION	ILLUSTRATION
RTRS-FS411DVLN	2-unit interior free standing rack, NG		
RTRS-FS411XLN	2-unit exterior free standing rack, NG		
RTRS-FS411DVLP	2-unit interior free standing rack, LP		
RTRS-FS411XLP	2-unit exterior free standing rack, LP		
RTRS-FS420DVLN	2-unit INLINE interior free standing rack, NG		
RTRS-FS420XLN	2-unit INLINE exterior free standing rack, NG		
RTRS-FS420DVLP	2-unit INLINE interior free standing rack, LP		
RTRS-FS420XLP	2-unit INLINE exterior free standing rack, LP		
RTRS-FS630DVLN	3-unit INLINE interior free standing rack, NG		
RTRS-FS630XLN	3-unit INLINE exterior free standing rack, NG		
RTRS-FS630DVLP	3-unit INLINE interior free standing rack, LP		
RTRS-FS630XLP	3-unit INLINE exterior free standing rack, LP		
RTRS-FS421DVLN	3-unit interior free standing rack, NG		
RTRS-FS421XLN	3-unit exterior free standing rack, NG		
RTRS-FS421DVLP	3-unit interior free standing rack, LP		
RTRS-FS421XLP	3-unit exterior free standing rack, LP		
RTRS-FS422DVLN	4-unit interior free standing rack, NG		
RTRS-FS422XLN	4-unit exterior free standing rack, NG		
RTRS-FS422DVLP	4-unit interior free standing rack, LP		
RTRS-FS422XLP	4-unit exterior free standing rack, LP		
RTRS-FS632DVLN	5-unit interior free standing rack, NG		
RTRS-FS632XLN	5-unit exterior free standing rack, NG		
RTRS-FS632DVLP	5-unit interior free standing rack, LP		
RTRS-FS632XLP	5-unit exterior free standing rack, LP		
RTRS-FS633DVLN	6-unit interior free standing rack, NG		
RTRS-FS633XLN	6-unit exterior free standing rack, NG		
RTRS-FS633DVLP	6-unit interior free standing rack, LP		
RTRS-FS633XLP	6-unit exterior free standing rack, LP		

4 UNIT FREE STANDING FRAME

Dimensions

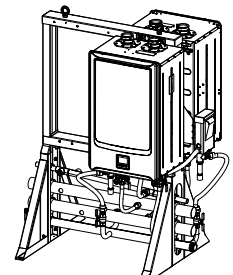
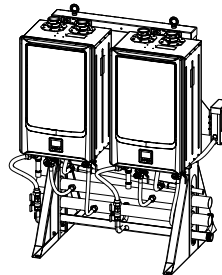
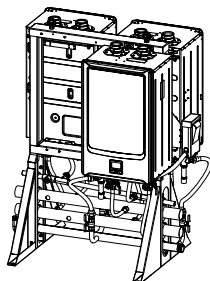
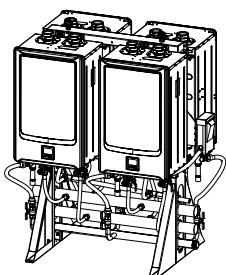


MODEL	CONFIGURATION	ILLUSTRATION
RTRS-FS422		
RTRS-FS421		
RTRS-FS420	In-line (Facing same direction) 	
RTRS-FS411	Back to Back 	

4 UNIT FREE STANDING FRAME

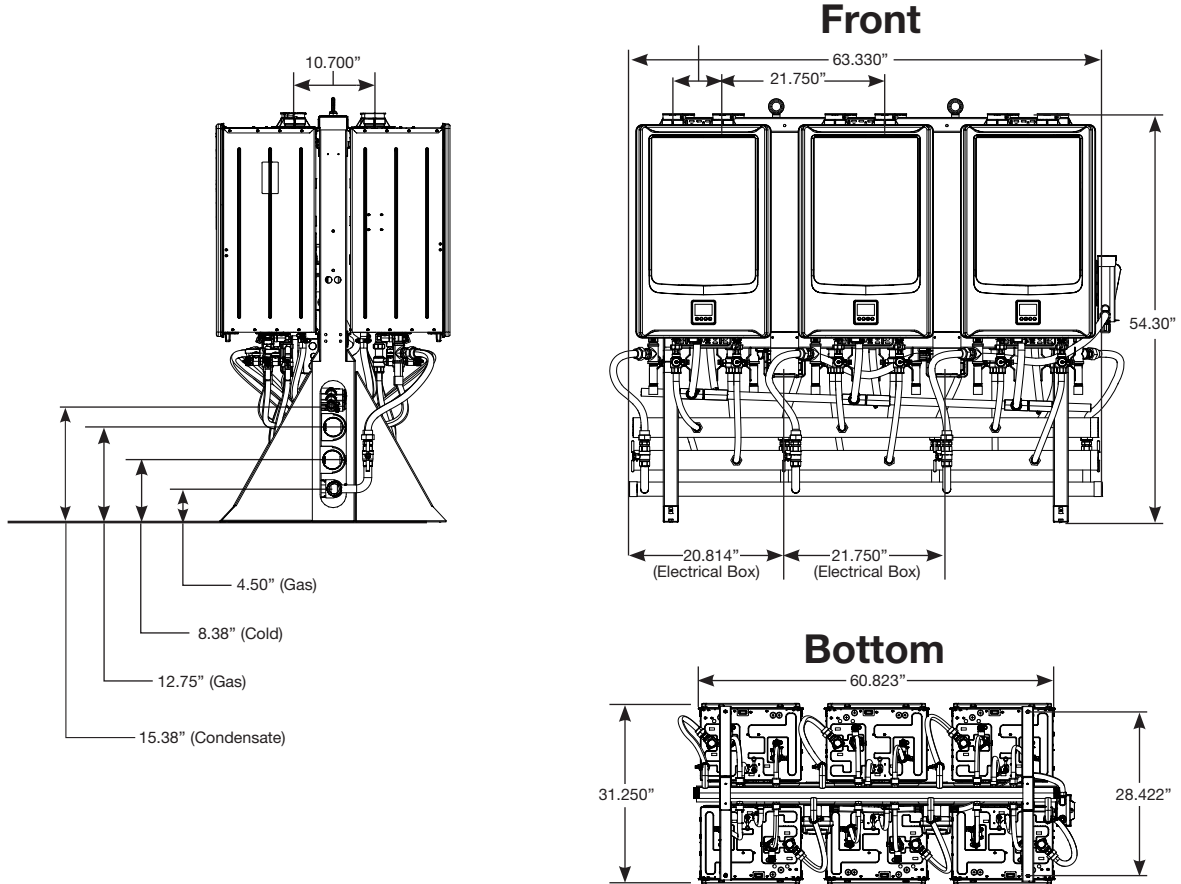
Specifications

MODEL	RTRS-FS422*		RTRS-FS421*	RTRS-FS420*	RTRS-FS411*
Water Heater Model	RTGH-CS11i (NG/LP, Indoor/Outdoor)				
Crate Dimensions (HxLxD) - in	65 X 55 X 38				
Weight - Fully Assembled - lbs	480	375	270	270	
Weight - Shipping (total) - lbs	590	485	380	380	
Rack Frame - Specifications					
Frame Material	14 Gauge Galvanized Steel				
Frame Finish	Powder Coat				
Color	Gray				
Water, Gas and Condensate Connections					
Hot Water Trunk Line Diameter	2 - 1/2"				
Cold Water Trunk Line Diameter	2 - 1/2"				
Hot Water Trunk Line Material	Rigid Copper				
Cold Water Trunk Line Material	Rigid Copper				
Water Trunk Connection Type	2 - 1/2" PIPE				
Gas Trunk Line Diameter	1-1/2"				
Gas Trunk Connection Type	1-1/2" MNPT				
Gas Trunk Line Material	Sch 40 Steel				
Gas Branch Line Material	Sch 40 Steel				
Condensate Trunk Line Diameter	3/4"				
Condensate Trunk Material	Sch-40 PVC				
Condensate Trunk Connection Type	3/4" Pipe				
Electric					
Voltage	120V AC/60 Hz				
Maximum Current (Amperes)	8	6	4		
BTU and Flow Rates					
Number of Tankless Water Heaters	4	3	2		
Flow rate @ 70°F rise (gpm)	22.1	16.6	11.1		
Flow rate @ 100°F rise (gpm)	15.5	11.6	7.7		
Minimum input rate (Btuh)	11,000				
Maximum input rate (Btuh)	799,600	599,700	399,800		



6 UNIT FREE STANDING FRAME

Dimensions



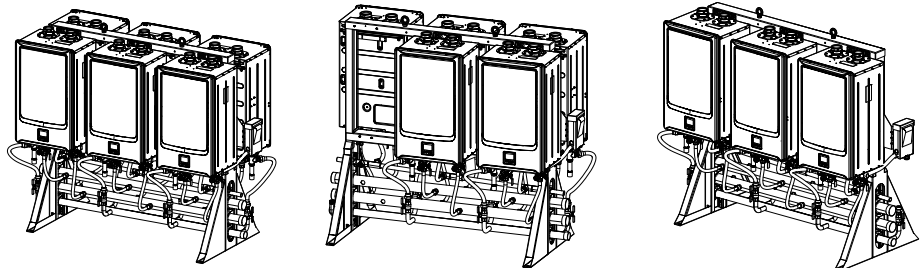
MODEL	CONFIGURATION	ILLUSTRATION
RTRS-FS633		
RTRS-FS632		
RTRS-FS630		

6 UNIT FREE STANDING FRAME

Specifications

MODEL	RTRS-FS633*	RTRS-FS632*	RTRS-FS630*
Water Heater Model	RTGH-CS11i (NG/LP, Indoor/Outdoor)		
Crate Dimensions (HxLxD) - in	65 X 74 X 38		
Weight - Fully Assembled - lbs	710	605	395
Weight - Shipping (total) - lbs	850	745	535
Rack Frame - Specifications			
Frame Material	14 Gauge Galvanized Steel		
Frame Finish	Powder Coat		
Color	Gray		
Water, Gas and Condensate Connections			
Hot Water Trunk Line Diameter	2-1/2"		
Cold Water Trunk Line Diameter	2-1/2"		
Hot Water Trunk Line Material	Rigid Copper		
Cold Water Trunk Line Material	Rigid Copper		
Water Trunk Connection Type	2-1/2" PIPE		
Gas Trunk Line Diameter	1-1/2"		
Gas Trunk Connection Type	1-1/2" MNPT		
Gas Trunk Line Material	Sch 40 Steel		
Gas Branch Line Material	Sch 40 Steel		
Condensate Trunk Line Diameter	3/4"		
Condensate Trunk Line Material	Sch-40 PVC		
Condensate Trunk Connection Type	3/4" Pipe		
Electric			
Voltage	120V AC/60 Hz		
Maximum Current (Amperes)	12	10	6
BTU and Flow Rates			
Number of Tankless Water Heaters	6	5	3
Flow rate @ 70°F rise (gpm)	33.2	27.6	16.6
Flow rate @ 100°F rise (gpm)	23.2	19.3	11.6
Minimum input rate (Btuh)	11,000		
Maximum input rate (Btuh)	1,199,400	999,500	599,700

*Refer to page 2 for Part Number



In keeping with its policy of continuous progress and product improvement, Rheem reserves the right to make changes without notice.

Rheem Water Heating • 1115 Northmeadow Parkway, Suite 100
Roswell, Georgia 30076 • www.rheem.com

Rheem Canada Ltd./Ltée • 125 Edgeware Road, Unit 1
Brampton, Ontario L6Y 0P5 • www.rheem.ca