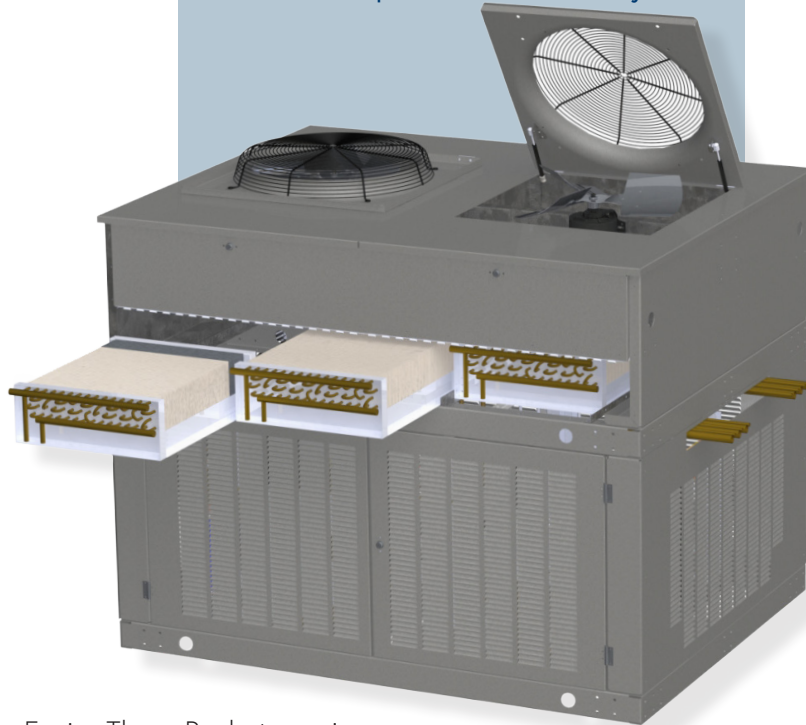


COLDZ^oNE

MODULAR COMPRESSOR RACK

An innovative and modular platform
that simplifies serviceability



Due to continuing product development, specifications are subject to change without notice.

HTPG is re-imagining our Enviro-Therm Racks to engineer a more efficient, light-weight and simplified system. The innovative Modular Compressor Rack is constructed with a Huck-bolt frame allowing easy access to each component of the entire rack. Equipment downtime is minimized as sections of coils can be removed without shutting down the entire system. Our rack is designed for cafeterias, commercial offices, hospitality & meal service, educational institutions, meeting the needs of most Food Service applications.

Modular Coil Cartridges

New design with segmented condensers in lieu of one large multi-circuited condenser, provides ease of coil replacement by simply swapping out individual coil cartridges. Only a portion of the unit requires shut down for maintenance which means more uptime.

Modular Compressor Assembly

Compressor cabinet with removable compressor trays provides quick access. This highly engineered layout of critical refrigeration system components provides quick access and ease of serviceability.

Flip-Top Hinged Venturi Panels

Easily accessible fans and motors with a flip-top venturi makes servicing convenient.



COLDZONE.HTPG.COM

COLDZ^oNE

MODULAR COMPRESSOR RACK

Easy Service Access Features



LED Control Panel & Cabinet Lighting

Illuminated cabinets and control boxes with LED light bars provide great visibility during service.



Breaker for Main Electrical Service Connection

In place of traditional fused disconnects, a circuit breaker now elegantly serves as primary connection for your electrical service.



Hinged Access Panels

Removable panels provide easier access to main compressor cabinet with smaller hinged doors.



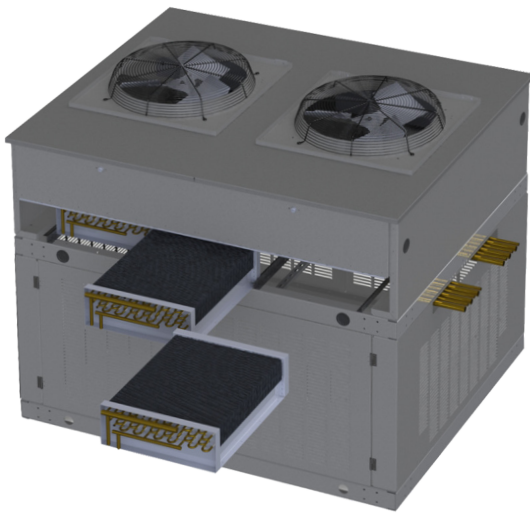
Duplex Outlet

Built-in duplex outlet for auxillary items like vacuum pump/recovery equipment eliminates the need for extension cords.



Additional Features

Convenient access to electronics and controls. Motors are rail-mounted and gauge hooks are strategically placed to support serviceability.



Flexible Options & Responsive Engineering

In addition to modernizing a trusted and proven design, we've integrated new quoting software allowing for faster turnaround on configure-to-quote projects. The Modular Compressor Rack accommodates up to 18 compressor spaces with 29 compressor options* ranging from 1/2 to 6HP and is A2L ready.

- 1/2 to 6 HP and up to 18 spaces
- 208-230V & 460V
- 2 through 5 fan options
- A2L Ready

SCROLL COMPRESSOR
Medium & Low Temp

HERMETIC* COMPRESSOR
Medium Temp

**Coming Soon*

COLDZONE.HTPG.COM