



The new degree of comfort.®

PROJECT NAME _____

LOCATION _____

ARCHITECT _____

ENGINEER _____

CONTRACTOR _____

SUBMITTED BY _____ DATE _____

UNIT SUMMARY

Quantity						
Unit Designation						
Model No.						
Total Cooling						
Sensible Cooling						
Air Ent. Evaporator						
Air Lvg. Evaporator						
Heating Input						
Heating Output						
CFM/ESP						
EER/SEER						
Electrical						
Minimum Ampacity						
Min.-Max. Breaker						
Net Unit Weight						
Accessory						
Catalog Form Number						

ACCESSORIES:

NOTES:

RHPBZR Endeavor® Line

iR Packaged Dedicated Horizontal Heat Pump

Nominal Sizes: 2 to 5 Ton [7.0 to 17.6 kW]

JOB NAME _____ LOCATION _____

CONTRACTOR _____ ORDER NO. _____

ENGINEER _____ UNIT MODEL NO. _____

SUBMITTED FOR APPROVAL RECORD COIL MODEL NO. _____

DATE _____ AIR HANDLER MODEL NO. _____

UNIT DATA

COOLING PERFORMANCE

TOTAL CAPACITY* MBH
 SENSIBLE CAPACITY* MBH
 OUTDOOR DESIGN TEMP.. °F [°C] DB/WB
 TOTAL SUPPLY AIR..... CFM [L/s]
 TEMP. OF AIR ENTERING
 EVAPORATOR COIL..... °F [°C] DB/WB
 POWER INPUT REQUIREMENT kW
 SEER RATING
 (*uses blower motor heat)

HEATING PERFORMANCE

GAS HEAT INPUT CAPACITY MBH
 HEAT PUMP HEATING PERFORMANCE
 CAPACITY @ 47°F..... MBH
 CAPACITY @ 17°F..... MBH
 COEFFICIENT OF PERFORMANCE
 @ 47°F..... C.O.P.
 @ 17°F..... C.O.P.
 ELECTRIC HEAT CAPACITY..... kW
 H.S.P.F.

SUPPLY AIR BLOWER PERFORMANCE

TOTAL AIR SUPPLY..... CFM [L/s]
 TOTAL RESISTANCE EXTERNAL
 TO UNIT..... IWG
 BLOWER SPEED..... RPM
 POWER OUTPUT REQUIREMENT BHP
 MOTOR RATING HP [W]
 POWER INPUT REQUIREMENT kW

ELECTRICAL DATA

POWER SUPPLY Hz
 TOTAL UNIT AMPACITY..... AMPS
 MINIMUM WIRE SIZE AWG
 MAXIMUM OVERCURRENT DEVICE
 FUSES/HACR BREAKER AMPS

TOTAL UNIT WEIGHT

TOTAL OPERATING WEIGHT..... LBS [kg]
 (including field-installed accessories)

CLEARANCES

SIDE "A"	18"	[457 mm]
SIDE "B"	0"	
SIDE "C"	12"	[305 mm]
SIDE "D"	30"	[762 mm]
ABOVE UNIT	60"	[1524 mm]

FEATURES

- Base rails protect the base from ground moisture and provides air circulation around the unit
- Easy access to internal components
- Large, easy-to-access control box
- 100% scroll compressor technology
- Two-stage scroll compressor
- Low pressure control standard on all models
- High pressure control standard on -060 models



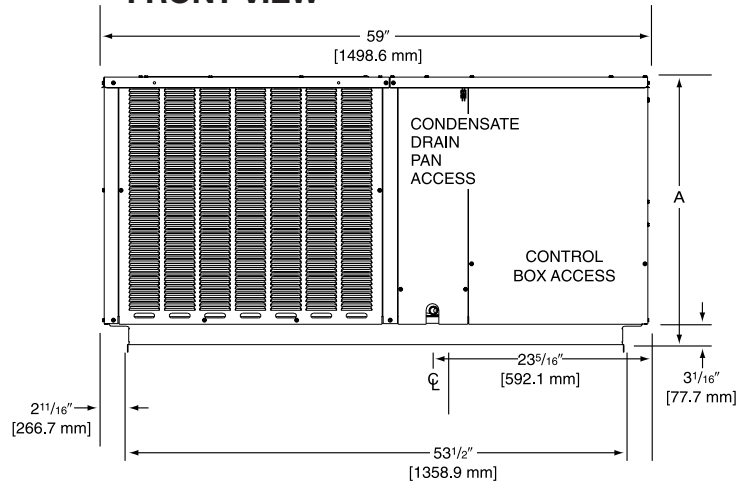
9001:2015



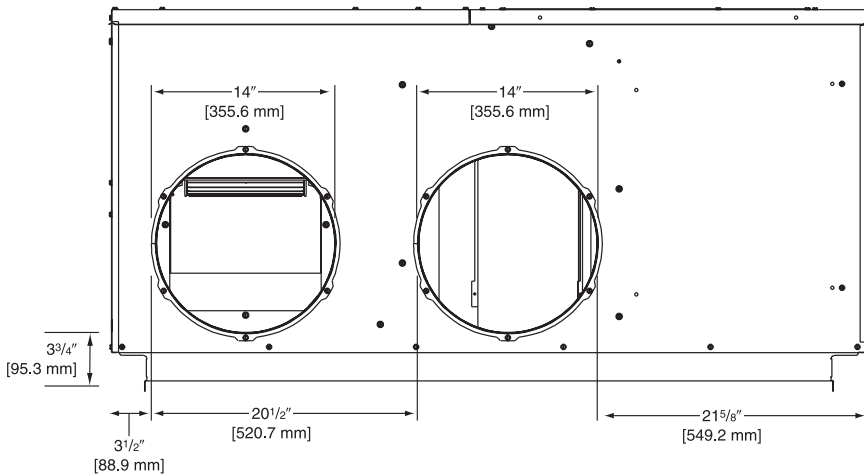
DIMENSIONS

Model	Height "A"
024, 030	29 1/8"
036, 042, 048, 060	37 1/8"

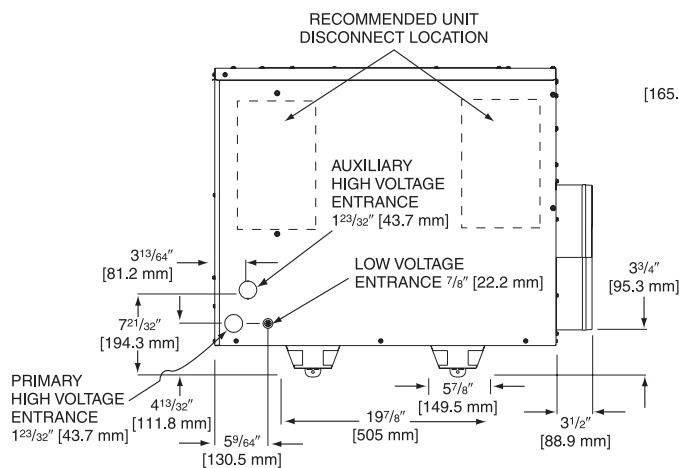
FRONT VIEW



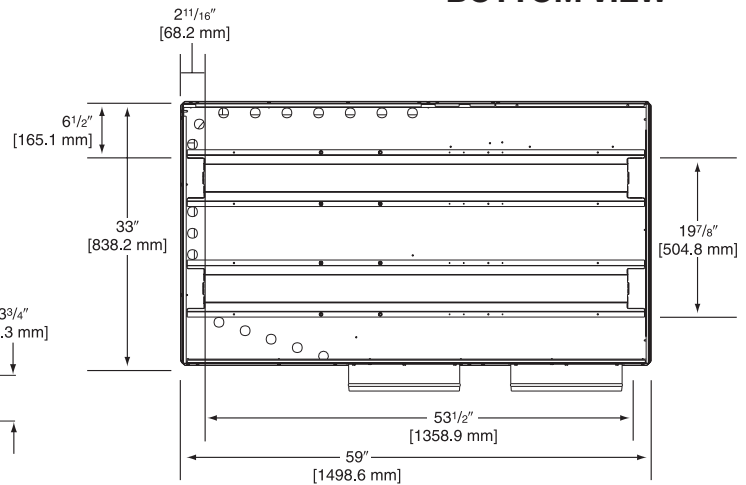
REAR VIEW



ELECTRICAL CONNECTIONS



BOTTOM VIEW



[] Designates Metric Conversions

Before proceeding with installation, refer to installation instructions packaged with each model, as well as complying with all Federal, State, Provincial, and Local codes, regulations, and practices.

5600 Old Greenwood Road
Fort Smith, Arkansas 72908

© 2023 Rheem Manufacturing Company. Rheem, Ruud and Friedrich trademarks owned by Rheem Manufacturing Company.

"In keeping with its policy of continuous progress and product improvement, Rheem reserves the right to make changes without notice."